

**OralArts**

DENTAL LABORATORIES HUNTSVILLE, ALABAMA

**Fee Schedule**

[www.oralartsdental.com](http://www.oralartsdental.com) • 800-354-2075



**OralArts**

DENTAL LABORATORIES HUNTSVILLE, ALABAMA

IPS e.Max SELECT  
Crowns 6-11

**Synergy**  
dental partners





## Benefits to Synergy Members

**15% OFF**  
Retail Prices



**FREE**  
Inbound Shipping



## High Quality. Advanced Technology. Expert Customer Service.

Oral Arts has grown to be a leader in the dental lab industry by providing a high level of quality, responsive customer service, and advanced technology. Today, we remain a family owned business that deeply cares about its customers and employees.



**Matt Winstead - Vice President, CDT**  
**Tiffany Winstead Marshall - Vice President of Administration**

## Why Choose Oral Arts?

Family owned and operated since 1970

Full service dental lab, headquartered in Huntsville, Alabama

All products are made in the USA

5 day in-lab turnaround on the majority of products

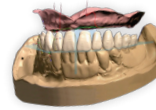
Accepting digital scan files from all intra-oral scanners

Specializing in CAD/CAM Implants, Orthodontics, Removable and Fixed Prosthodontics



## Metal Free Restorations

Element-Z 5 Day Turn-Around	Price
Model-Less Element-Z (4Y) from your scan file <b>3 Day Turn-Around</b>	70.00
Element-Z (4Y) Solid Zirconia - Crowns/Bridges	90.00
Element-Z (4Y) Veneers	118.00
Element-Z (4Y) Lingual with Porcelain facial	144.00
Element-Z (4Y) fabricated in Select Dept. <b>10 Day Turn-Around</b>	254.00
Ultra-Z Esthetic 5 Day Turn-Around	Price
Model-Less Ultra-Z Esthetic (5Y) from your scan file <b>3 Day Turn-Around</b>	70.00
Ultra-Z Esthetic (5Y) - Crowns/Bridges	90.00
Ultra-Z Esthetic (5Y) Veneers	118.00
Ultra-Z Esthetic (5Y) fabricated in Select Dept <b>10 Day Turn-Around</b>	254.00
LiSi Press 5 Day Turn-Around	Price
LiSi Press - Crowns/Bridges/Inlays	113.00
LiSi Press - Veneers	122.00
LiSi Press Cut Back & Layered	137.00
LiSi Press fabricated in Select Department <b>10 Day Turn-Around</b>	339.00



## Digital Impressions

Model-less 5 Day Turn-Around	Price
Element-Z (3Y) or Ultra-Z Esthetic (5Y)	70.00
Oral Temp CAD/CAM Provisionals	26.00
Screw-Retained Element-Z (4Y) or Ultra-Z (5Y) crown <b>10 Day Turn-Around</b>	249.00
With a Printed Model 5 Day Turn-Around	Price
Element-Z (4Y), Ultra-Z Esthetic (5Y) or LiSi Press	90.00/113.00
Oral Temp CAD/CAM Provisionals	43.00
Element-Z (4Y) Lingual with Porcelain Facial	144.00

## Maryland Bridge

5 Day Turn-Around	Price
Zirconia Maryland Bridge complete with wings	343.00
Porcelain Pontic, metal included	136.00
Wraps	37.00
Etch	37.00
Re-Etch	24.00



## Crown Tattoos

6 Day Turn-Around	Price
Crown Tattoos	132.00



## PFM Restorations

*Conventional 5 Day Turn-Around	Metal Occlusal	Price
Porcelain to Base	131.00	144.00
*Porcelain to Noble	179.00	204.00
*Porcelain to Hi-Noble White	183.00	207.00
*Porcelain to Hi-Noble Yellow	201.00	226.00



## Oral Arts SELECT

10 Day Turn-Around	Price
Element-Z (4Y) or Ultra-Z Esthetic (5Y)	254.00
Element-Z (4Y) Lingual	339.00
LiSi Press	339.00
Full Cast Restorations	Retail +100.00
Porcelain to Base	339.00
Porcelain to Noble	405.00
Porcelain to Hi-Noble White	407.00
Porcelain to Hi-Noble Yellow	424.00
SELECT PMMA Hybrid (Bridge without parts)	406.00
SELECT CAD/CAM Oral Temps	52.00/unit
SELECT Diagnostic Wax-Up	43.00/unit
SELECT Digital Wax-Up	31.00/unit



## Full Cast Restorations

3 Day Turn-Around	Price
Base Metal	122.00
*White Noble	189.00
*Argenco Y +Yellow Noble	202.00
*Yellow Noble	217.00
*White Hi-Noble Crown or Inlay	301.00
*Yellow Hi-Noble Crown or Inlay	253.00

	Base	Noble	Hi-Noble
Direct Post/Core	48.00	49.00	50.00
Indirect Post/Core	53.00	55.00	56.00
Telescopic Crown/Coping	71.00	76.00	77.00



## Temporaries & Diagnostic Wax-Ups

4 Day Turn-Around	Price
Snap-On Smile	36.00/unit
Model-Less Oral Temp CAD/CAM Provisionals <b>3 Day Turn-Around</b>	26.00/unit
Oral Temp CAD/CAM Provisionals	43.00/unit
Oral Temp Fiber Force Reinforcement	47.00/arch
Screw-Retained Oral Temp	43.00/unit
DuraTemps	47.00/unit
Diagnostic Wax-up	24.00/unit
Digital Waxup with Printed Model	15.00/unit
Digital Waxup w/Screenshot / STL Files	48.00/arch
2D Digital Smile Design Patient Photo (DSD Style)	48.00
Surgical Tray/Prep Guide	22.00
Temporary Template	24.00
Duplicate Model	19.00

**Receive your Diagnostic Wax-Up at zero cost** when you return the final case to Oral Arts for completion. Include the attached coupon or write the code "DWUD" on the RX for the final restoration(s), and we will issue a refund for the cost of the diagnostic wax-up (shipping not included).

## Combined Crown or Partial

3 Day Turn-Around	Price
Fixed Attachment Labor per arch	130.00
Construct to Fit Crown to Partial	47.00
Survey and Design Crown for Partial	39.00



Fabricated by Oral Arts Technicians



*\*Note: PFM / FGC crown prices listed do not include alloy surcharge. Prices / surcharges are subject to change without notice due to the volatility of precious alloys. Contact us for the current alloy surcharge.*



## Crown & Bridge Miscellaneous

3 Day Turn-Around		Price
Add Porcelain to Metal Try-in		51.00
Cut Back and Layer Porcelain		24.00
Duplicate Model		19.00
Epoxy Model		39.00
Interlock		56.00
Milled Rest		60.00
Opposing Units, per unit		12.00
Pink Tissue, per unit		32.00
Porcelain Butt Margin		53.00
Pour and Return Models		27.00
Composite Acrylic Facing on Crown		39.00
Strip and Rebuild Porcelain, per unit		55.00
Reduction Coping		16.00
Zirconia Stress Breaker		20.00
*Metal Try-in 3 Day Turn-Around		
Base	Noble	Hi-Noble White      Hi-Noble Yellow
83.00	142.00	145.00      165.00



## Dentures

5 Day Turn-Around		Price
TrueFIT 3D Printed Economy Denture		186.00
Characterized Tissue Toning		+24.00
Economy Denture Includes custom tray, bite rim, set-up & try-in, process and finish in Lucitone 199 Acrylic. Includes Economy Teeth		461.00
Premium Denture Includes custom tray, bite rim, set-up & try-in, process and finish in Lucitone 199 Acrylic. Includes Premium Teeth		545.00
IvoBase Premium Denture Includes custom tray, bite rim, set-up & try-in, process and finish in IvoBase Premium Injection Acrylic. Includes Premium Teeth		595.00

Dentures Continued		Price
Immediate Denture with Economy Teeth Includes: 6 extractions, setup, process, and finish with economy teeth.		403.00
Immediate Denture with Premium Teeth Includes: 6 extractions, setup, process, and finish with premium teeth.		487.00
Ala Carte Dentures		Price
Altered Cast		24.00
Avoid Embarrassment Denture		140.00
Bite Rim		40.00
Bite Rim on IvoBase Base		89.00
Bite Rim on Processed Base		60.00
Bite Rim on Sprinkled Base		49.00
Custom Tray with Handle		40.00
Clear Duplicate Denture		95.00
Clear Duplicate Denture w/ Barium Sulfate		116.00
TrueFIT 3D Printed Tryin Reset Denture		23.00
TrueFIT 3D Printed Duplicate Denture		139.00
TrueFIT 3D Printed Tryin Denture		48.00
TrueFIT Characterized Tissue Toning		+24.00
Denture Setup		53.00
FiberForce Reinforcement		99.00
Mesh Metal Palate		122.00
Immediate, per tooth to be extracted		8.00
Radiographic Implant Surgical Guide		113.00
Name in Denture		24.00
Process & Finish, Premium Acrylic		174.00
Soft Liner Process & Finish w/ Lucitone 199		228.00
Reset to New Bite		35.00
Strengthening Bar		34.00
Screw-Retained Set-up		76.00
Screw-Retained Reset		48.00
Teeth		Market Price
Try-in Wax Set-up		24.00
Rebase Denture		175.00
Same Day Rebase/Reline/Repair Denture		+48.00
Hard Reline		132.00
Soft Reline		193.00
Economy Teeth Anterior		11.00
Economy Teeth Posterior		8.00
Premium Teeth Anterior		21.00
Premium Teeth Posterior		11.00
Repair		87.00

*\*Note: PFM / FGC crown prices listed do not include alloy surcharge. Prices / surcharges are subject to change without notice due to the volatility of precious alloys. Contact us for the current alloy surcharge.*



## Non-Flexible Partial

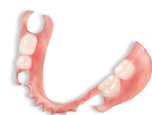
Partial Frameworks 10-15 Day Turn-Around Complete		Price
Includes initial try-in, without teeth		381.00
Cast Chrome Conventional or Hidden Clasp Framework <b>15 Day Turn-Around</b>		174.00
Acrylic Partial, without teeth and clasps <b>10 Day Turn-Around</b>		143.00
Ala Carte Partials		Price
Attachment Labor per Arch		122.00
All Metal Dummy or Backing		39.00
Cast Clasp w/ laser weld (includes laser weld fee)		76.00
Composite Facing on Metal Backing		43.00
Full Cast Base		122.00
Repair Cast/Flexible		84.00/99.00
Occlusal Onlay		45.00
Partial Bite Rim		35.00
Process & Finish, Premium Acrylic		99.00
Reline		132.00
Set-up Cast/Flexible		43.00 / 67.00
Swing Lock/DE Hinge Partial Frame		303.00
Try-in Wax Set-up		24.00
Wrought Wire Clasp		35.00
Gasket Partials 10 Day Turn-Around		Price
Set-up		48.00
Process & Finish, Premium Acrylic		253.00
Try-in Wax Set-up		24.00
Gasket Reline		150.00
Hard Reline & Gasket Reline		243.00

**Complete Partial includes:** Framework, Setup, and Premium Acrylic Finish.



## Fusion CAD/CAM Partial

6 Day Turn-Around		Price
Fusion Partial w/ Pontic/s		349.00
Add Pink Composite		48.00



## Flexible Partials

8 Day Turn-Around		Price
DuraFlex Partial & TCS Unbreakable w/ Economy Teeth		263.00
Flexible Metal Combo w/ Economy Teeth		418.00
All Metal Dummy or Backing		39.00
Composite Facing		43.00
Flexible Partial Adjustment Kit		65.00
Flexible Partial Occlusal Rest		39.00
Process and Finish		196.00
Repair		99.00
Set-up		67.00
Try-in Wax Set-up		24.00



## Screw-Retained Implant Crown Packages

10 Day Turn-Around	Non-Authentic (Non OEM Parts)	Authentic (OEM Parts)
Element-Z (4Y), Ultra- Z Esthetic (5Y) Screw-Retained Crown	315.00	468.00
SELECT Crown	+164.00 / Unit	
DIGITAL Element-Z (3Y) or Ultra-Z Esthetic (5Y) Screw-Retained Crown	305.00	458.00
LiSi Press Screw-Retained Crown	338.00	491.00
SELECT Crown	+226.00 / Unit	
Model-less Element-Z (4Y) or Ultra-Z Esthetic (5Y) Screw-Retained Crown	295.00	448.00
Nobel ASC with Monolithic Screw-Retained Crown	NA	397.00
*Porcelain to Noble Screw-Retained Crown	404.00	557.00
SELECT Crown	+226.00 / Unit	
*Porcelain to Hi-Noble White Screw-Retained Crown	408.00	561.00
SELECT Crown	+224.00 / Unit	
*Porcelain to Hi-Noble Yellow Screw-Retained Crown	426.00	579.00
SELECT Crown	+223.00 / Unit	
Screw-Retained Oral Temp	268.00	421.00

**Screw-retained crown price includes:** model work with soft tissue, implant labor, clinical screw and final crown. \*Prices do not include authentic analogs, alloy surcharge or UCLA parts.

*\*Note: PFM / FGC crown prices listed do not include alloy surcharge. Prices / surcharges are subject to change without notice due to the volatility of precious alloys. Contact us for the current alloy surcharge.*

## Implant Fee Schedule: Predictable Package Pricing



### Custom Abutments

10 Day Turn-Around	Price
OAL Custom Titanium Abutment	279.00
OAL Custom Zirconia Abutment with Ti-Base	279.00
OAL Custom Titanium Gold Hue Abutment	316.00
OEM Custom Abutment	322.00



### Stand Alone Crown & Bridge Implant Items

10 Day Turn-Around	Price
3i Analog	41.00
Epoxy Model for Pour Direct Cases	39.00
Soft Tissue Model	24.00
Zirconia Hybrid Labor per arch	85.00
Prepare Stock Implant Abutment	95.00
Verification Jig without Parts	79.00
Anodize Gold or Pink Existing Implant Component	39.00
Custom Wax/Cast Abutment Labor	140.00
SLM Bone Reduction Guide	262.00
SLM Drill Guide	262.00
SLM Finish and Polish	136.00



### Cement Retained Implant Crown Packages

10 Day Turn-Around	Non-Authentic (with Custom Ti or Zr Abutment)	Authentic (OEM Parts)
Element-Z (4Y) Solid Zirconia, Ultra-Z Esthetic (5Y)	422.00	465.00
SELECT Crown	+164.00 / Unit	
DIGITAL Element-Z (3Y) or Ultra-Z Esthetic (5Y) Screw-Retained Crown	412.00	455.00
LiSi Press Crown	445.00	488.00
SELECT Crown	+226.00 / Unit	
Nobel ASC Abutment to Monolithic Crown	NA	397.00
PFM Non-Precious Crown*	463.00	506.00
*PFM Noble Crown*	511.00	554.00
SELECT Crown	+226.00 / Unit	
PFM High Noble White Crown*	515.00	558.00
SELECT Crown	+224.00 / Unit	
PFM High Noble Yellow Crown*	533.00	576.00
SELECT Crown	+223.00 / Unit	

**Crown over custom abutment prices includes:** model work with soft tissue, lab analog and screw, Custom Titanium or Zirconia Abutment, final crown, and clinical screw. \*Prices do not include authentic analogs, alloy surcharge or UCLA parts.



### BioLogic Hybrid

10-15 Day Turn-Around	Price
BioLogic Hybrid w/4 implants w/parts	4,006.00
BioLogic Hybrid w/5 implants w/parts	4,232.00
BioLogic Hybrid w/6 implants w/parts	4,438.00
SELECT BioLogic Hybrid w/4 implants w/parts	5,993.00
SELECT BioLogic Hybrid w/5 implants w/parts	6,199.00
SELECT BioLogic Hybrid w/6 implants w/parts	6,405.00

**Price w/parts Includes:** 2 soft tissue models, 4 implant analogs, verification jig with 4 cylinders, bite rim, screw-retained setup with 4 cylinders & wax try-in w/economy teeth, implant labor, and final bridge with pink tissue, 12 monolithic crowns, and new cylinders. SELECT prices include SELECT Element-Z or Ultra-Z esthetic crowns. SELECT Element-Z Lingual crowns and LiSi Press crowns are + \$100 per unit.

**Prices shown are for the following implant platforms only:** (Non-Authentic) Astra, Zimmer, Biohorizons, Biomet 3i, Straumann bone level, Nobel Biocare, Implant Direct Legacy. \*Multi-unit abutments or additional implant parts are not included.

## Implant Fee Schedule: Predictable Package Pricing



### Element-Z Screw-Retained Hybrid

10-15 Day Turn-Around	Price
Bridge only w/o parts or preliminary steps	2,009.00
Element-Z Screw-Retained Hybrid w/ 4 implants w/parts	3,303.00
Element-Z Screw-Retained Hybrid w/ 5 Implants w/parts	3,509.00
Element-Z Screw-Retained Hybrid w/ 6 Implants w/parts	3,715.00
SELECT Zirconia Hybrid (bridge only) w/o parts	2,880.00
SELECT Zirconia Hybrid w/4 implants w/ parts	4,234.00
SELECT Zirconia Hybrid w/5 implants w/ parts	4,440.00
SELECT Zirconia Hybrid w/6 implants w/ parts	4,646.00
SELECT Cutback & Layer	181.00/ unit
SELECT PMMA Hybrid Bridge (without parts)	406.00
SELECT PMMA Hybrid Bridge (only white & without parts)	184.00
Screw-Retained PMMA Verification Bridge w/Pink Composite	308.00
CAD/CAM PMMA Hybrid Bridge (only white & without parts)	167.00

**Price w/parts Includes:** 2 soft tissue models, 4 Implant Analogs, Verification Jig with 4 cylinders, Bite Rim, Screw-Retained Setup w/4 cylinders & Wax Try-In w/ Economy Teeth, implant labor, and final bridge with pink tissue and new cylinders. Prices shown are for the following implant platforms only: (Non-Authentic) Astra, Zimmer, Biohorizons, Biomet 3i, Straumann bone level, Nobel Biocare, Implant Direct Legacy. \*Multi-unit abutments or additional implant parts are not included.



### CAD/Printed Surgical Guide

5-15 Day Turn-Around	Price
Surgical Planning 1-3 Implants	174.00
Surgical Planning 4+ Implants	259.00
Resin Printed Surgical Guide	170.00
Invasive Surgical Planning	438.00
Resin Printed Pin Guide	170.00
Metal Bone Reduction Guide / Scallop Guide	595.00
Resin Printed Osteotomy Guide	170.00
Metal Osteotomy Guide	595.00
Resin Printed Appliance Jig	170.00
Metal Appliance Jig	255.00
Screw-Retained PMMA w/o Pink	167.00
Screw-Retained PMMA with Pink	308.00
TrueFit 3D Printed Economy Denture	186.00
Fixation Screw Kit	849.00
Sleeves/Pins	Market Price
Multi-unit Abutments	Market Price
Ti-Cylinders	Market Price



### Trilor® / PMMA Hybrid

10-15 Day Turn-Around	Price
Bridge only w/o parts or preliminary steps	1,673.00
Trilor / PMMA Hybrid w/4 implants w/parts	3,026.00
Trilor / PMMA Hybrid w/5 implants w/parts	3,232.00
Trilor / PMMA Hybrid w/6 implants w/parts	3,438.00
SELECT Bridge only w/o parts or preliminary steps	2,615.00
SELECT Trilor / PMMA Hybrid w/4 implants w/parts	3,969.00
SELECT Trilor / PMMA Hybrid w/5 implants w/parts	4,175.00
SELECT Trilor / PMMA Hybrid w/6 implants w/parts	4,381.00

**Price w/parts Includes:** 2 soft tissue models, 4 implant analogs, verification jig with 4 cylinders, bite rim, screw-retained setup with 4 cylinders & wax try-in w/ economy teeth, implant labor, and final bridge with pink tissue.

Prices shown are for the following implant platforms only: (Non-Authentic) Astra, Zimmer, Biohorizons, Biomet 3i, Straumann bone level, Nobel Biocare, Implant Direct Legacy. \*Multi-unit abutments or additional implant parts are not included.



### Implant Removable & Fixed Removable

10 Day Turn-Around	Price
Mini Implant Overdenture on 2 Implants w/ Economy Teeth	743.00
On 2 Implants w/ Premium Teeth	827.00
On 3 Implants w/ Economy Teeth	807.00
On 3 Implants w/ Premium Teeth	891.00

Additional information on **page 7**.



*\*Note: PFM / FGC crown prices listed do not include alloy surcharge. Prices / surcharges are subject to change without notice due to the volatility of precious alloys. Contact us for the current alloy surcharge.*

### Additional Information: Implant Removable & Fixed Removable

**Price includes:** 2 Analogs, 2 O-Ring Housings, Labor, Model Work, Custom Tray, Bite Rim, Setup & Wax Try-In, Process & Finish with Economy Teeth

Prices will vary for more implant components or attachments than are shown below. Additional implant parts, if needed, are not included. CAD/CAM bar prices shown are for the following implant platforms only: Astra Tech, BioHorizons, Biomet 3i, Branemark, Nobel Biocare, Straumann, Thommen, Zimmer

Mini Implant Overdenture on 2 Implants w/ Economy Teeth Cont...	Price
On 4 Implants w/ Economy Teeth	871.00
On 4 Implants w/ Premium Teeth	955.00
On 5 Implants w/ Economy Teeth	935.00
On 5 Implants w/ Premium Teeth	1,019.00

Locator Overdenture on 2 Implants w/ Economy Teeth	Price
On 2 Implants w/ Premium Teeth	864.00
On 3 Implants w/ Economy Teeth	854.00
On 3 Implants w/ Premium Teeth	938.00
On 4 Implants w/ Economy Teeth	928.00
On 4 Implants w/ Premium Teeth	1,012.00
On 5 Implants w/ Economy Teeth	1,002.00
On 5 Implants w/ Premium Teeth	1,086.00

**Price includes:** 2 Locator Abutments, Analogs, Housings, Labor, Model Work, Locator, Bite Rim, Setup & Wax Try-In, Process & Finish with Economy Teeth. Call for Straumann pricing.

Locator CAD/CAM Milled Bar Overdenture w/ Economy Teeth	Price
On 2 Implants w/ Economy Teeth	1,725.00
On 2 Implants w/ Premium Teeth	1,809.00
On 3 Implants w/ Economy Teeth	2,227.00
On 3 Implants w/ Premium Teeth	2,311.00
On 4 Implants w/ Economy Teeth	2,730.00
On 4 Implants w/ Premium Teeth	2,814.00
On 5 Implants w/ Economy Teeth	3,233.00
On 5 Implants w/ Premium Teeth	3,317.00
On 6 Implants w/ Economy Teeth	3,702.00
On 6 Implants w/ Premium Teeth	3,786.00

**Price includes:** Implant Analogs, Housings & Attachments, Verification Index, Precision-Milled Titanium Bar, Labor, Model Work, Bite Rim, Screw Retained Setup & Wax Try-In, Process & Finish with Economy Teeth. Prosthetic Screws extra.

Conus Implant Denture	Price
On 3 Implants w/ Economy teeth	2,252.00
On 3 Implants w/ Premium teeth	2,266.00
On 4 Implants w/ Economy teeth	2,783.00
On 4 Implants w/ Premium teeth	2,867.00
On 5 Implants w/ Economy teeth	3,314.00
On 5 Implants w/ Premium teeth	3,398.00
On 6 Implants w/ Economy teeth	3,846.00
On 6 Implants w/ Premium teeth	3,930.00

**Price includes:** Implant analogs, Housings and Attachments, Labor, Model Work, Bite Rim, Setup and Wax Try-In, Process and Finish) Prosthetic screws and screw-retained option is extra.

## Stand Alone Denture Implant Items

10 Day Turn-Around	Price
Locator/O-Ring Attachment Overdenture Labor per arch	130.00
Pour and Return Models (3 Day Turn-Around)	27.00
Screw-Retained/Implant Retained Bite Rim	48.00
Screw-Retained Hybrid Denture Labor per Implant	41.00
Screw-Retained Process & Finish	187.00
Screw-Retained Setup	76.00
Screw-Retained Reset	48.00
Soft Tissue Model	24.00
Surgical Implant Guide Acrylic	94.00
Titanium CAD/CAM Implant Bar 4 implants	1,673.00
Titanium CAD/CAM Implant Bar 5 implants	2,091.00
Titanium CAD/CAM Implant Bar 6+ implants	2,508.00
Trilor Implant Bar 4 Implants	744.00
Trilor Implant Bar 5 Implants	929.00
Trilor Implant Bar 6 Implants	1,116.00
Verification Jig without parts	79.00

*\*Note: PFM / FGC crown prices listed do not include alloy surcharge. Prices / surcharges are subject to change without notice due to the volatility of precious alloys. Contact us for the current alloy surcharge.*



## Nightguards, Splints, Sports Mouthguards & Bleaching Trays

5 Day Turn-Around	Price
TrueSplint (3D Printed Digital Splint)	87.00
AstronCLEAR Splint	126.00
AstronCOLOR Splint	136.00
Bite Soft Splint	126.00
Bleaching Tray	71.00
Clear Sports Mouthguard	71.00
Colored Sports Mouthguard	79.00
Mouthguard Customization	+26.00
Comfort H/S Splint	79.00
Comfort H/S fully equilibrated, with acrylic	109.00
Comfort H/S, add color	+20.00
Day Guard	101.00
Gelb Splint	102.00
Helmet Strap	24.00
IvoBase Clear Injection Splint	130.00
Soft Splint	48.00
Variflex H/S Splint (Heat Softened)	137.00
Kois Deprogrammer	99.00



## Sleep Apnea Devices

5 Day Turn-Around	Price
myTAP <b>1 Day Turn-Around</b>	122.00
dreamTAP	424.00
Myerson EMA Sleep Apnea Device	220.00
QuietNite Sleep Appliance	247.00



## SomnoMed

SomnoMed Signature Line 21 Day Turn-Around	Price
SomnoDent Flex	605.00
SomnoDent Edent - Flex	713.00
SomnoDent - Classic	546.00
SomnoDent Edent - Classic	650.00
SomnoDent Classic - Lingualless	654.00
SomnoDent Fusion - Classic	633.00
SomnoDent Fusion - Flex	633.00
SomnoMed Standard Line	Price
SomnoDent Air	381.00
SomnoDent Air +	404.00
Standard - Bite Ramp	23.00
Standard - Anterior Opening	23.00
Standard - ER Hooks	24.00
Standard - Model Pour	14.00
SomnoDent Air - Extended Warranty - 1 year	88.00
SomnoDent Air - Extended Warranty - 2 year	139.00
Telescopic Herbst - Classic	421.00
Telescopic Herbst - Flex	455.00
SomnoDent Herbst Advance - Flex	546.00



*\*Note: PFM / FGC crown prices listed do not include alloy surcharge. Prices / surcharges are subject to change without notice due to the volatility of precious alloys. Contact us for the current alloy surcharge.*



## Orthodontics

5 Day Turn-Around	Price
Circumferential Hawley	136.00
Customized Hawley	29.00
Essix Retainer	71.00
Hawley Retainer w/clasps	114.00
Modified Hawley	128.00
Modified Spring Retainer 6/6	145.00
Per tooth reset	19.00
Positioner	110.00
Positioner Diagnostic Setup	101.00
San Antonio Hawley Retainer	145.00
Spring Retainer 3/3 or 4/4	48.00
Functional Appliances 6 Day Turn-Around	
Schwartz	125.00
Upper or Lower Sagittal with 2 screws	141.00
Upper or Lower Sagittal with 3 screws	175.00
Fixed Appliances (bands not included)	
Bonded Lingual Retainer	43.00
6 x 6 Lingual Arch	48.00
Bonded Palatal Expander w/ Hyrax Screw	116.00
Palatal Expander w/ Hyrax Screw	89.00
Fixed Appliances (bands not included)	
HAAS Palatal Expander	104.00
Habit or Crib	73.00
Nance	53.00
Quad-Helix	69.00
Space Maintainers	41.00



## Clear Aligners

3+7 Day Turn-Around*	
TrueAlign Clear Aligner Trays (per tray / per arch)	32.00
TrueAlign Treatment Plan (per arch)	175.00

\* Treatment planning: 3 business days from receipt of Rx.  
Manufacturing: 7 business days following treatment plan approval.

Additional	Price
Adams or Ball Clasp, each	35.00
Auxiliaries or Finger Springs	19.00
Braces w/wire Removal	39.00/arch
Bracket Removal	20.00/arch
Bracket, Wire and Molar Band Removal	48.00/arch
Ortho Band	19.00/unit
Expansion Screw	34.00
Labial Bow	28.00
Lingual Bar	26.00
Repair	43.00
Molar Band Removal	28.00/arch
Orthodontic Models, per set	52.00
Plastic Teeth	Market Price
Solder Hook or Solder Pin	19.00
Colored Retainers	Price
First color Extra	7.00
Each Additional Color	9.00
Ortho Wrought Wire Clasp	35.00



**Custom Retainers Available!**



