



SOOOO PROTECTED WITH **PROFISIL**® FLUORIDE VARNISH

KETTENBACHDENTAL
Simply intelligent

A new dimension of Fluoride Varnish

Profisil® Fluoride Varnish contains **5% sodium fluoride** in a mucosa-friendly, pleasantly flavored dimethicone gel. This formula **is not made with ethyl alcohol or rosin**, which prevents the risk of allergic reactions and eliminates common complaints

Product Properties

- Immediate and continuous fluoride release
- Transparent and colorless for optimal aesthetics
- Not sticky or gritty, easy to spread

Print/Download
Step-by-Step
Instructions!



BENEFITS FOR THE DENTAL PROFESSIONAL

- Unnecessary to dry teeth prior to application of the varnish
- Can be easily applied in any direction, migrating to difficult to reach areas
- Increases fluoride acceptance and patient satisfaction
- Won't clog suction lines
- Lubricious, non-clumping formula
 - » No need to replace gummy brushes
- Can be applied prior to exam

BENEFITS FOR THE PATIENT

- Great taste and texture provides a smooth mouth feel that patients will love
- Protective coating to tooth surfaces by occluding tubules with calcium fluoride crystals
- No stinging, burning or bitter after taste
 - » not made with ethyl alcohol
- Patients can immediately resume eating and drinking*
- Non-allergenic formula has no dyes, preservatives, tree nuts, peanuts, soy, and gluten.

*Avoid hot liquids, hard crunchy foods and alcohol.

“ Testimonial by Dr. Phil Chung ”

Used it all day! Toddlers to Teens. Used it on kids that had a history of flavor and sensory aversion to varnish. ZERO complaints. Loved it! My hygienists also love it and comment on the great texture and handling of the material.

Dr. Phil Chung, Delran, NJ



SOOOO PROTECTED WITH PROFISIL® FLUORIDE VARNISH



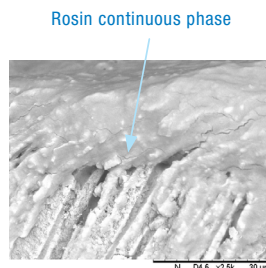
Studies of Stephen Gross PhD, Professor of Chemistry

Study 1: Fluoride Release

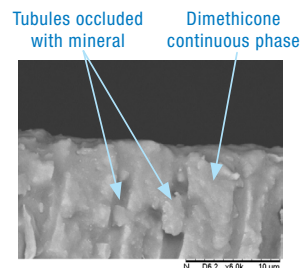


SCAN OR CLICK TO READ
THE WHOLE STUDY

Study 2: Scanning Electron Microscopy (SEM)



Predicate device



Profisil® Fluoride Varnish
successfully occluded the tubules



SCAN OR CLICK TO READ
THE WHOLE STUDY

Product range

The varnish is available in following versions:
Available as single dose unit incl. a brush for easy application.

MINT

BERRY

UNFLAVORED



| | Flavors | Product Contents | SKU # | Retail Price | Synergy Price |
|----------------|---|------------------|-------|--------------|---------------|
| Normal pack | Mint | 50 x 0.5 mL | 14802 | \$ 99.00 ea | \$89.00 |
| | Berry | 50 x 0.5 mL | 14804 | | |
| | Unflavored | 50 x 0.5 mL | 14806 | | |
| | Flavors | Product Contents | SKU # | Retail Price | Synergy Price |
| Bulk pack | Mint | 300 x 0.5 mL | 14807 | \$ 320.00 ea | \$288.00 |
| | Berry | 300 x 0.5 mL | 14808 | | |
| | Unflavored | 300 x 0.5 mL | 14809 | | |
| | Flavors | Product Contents | SKU # | Retail Price | Synergy Price |
| SuperBulk pack | Mint | 1000 x 0.5 mL | 14810 | \$ 890.00 ea | \$801.00 |
| | Berry | 1000 x 0.5 mL | 14811 | | |
| | Unflavored | 1000 x 0.5 mL | 14812 | | |
| | Product Contents/Flavor | | SKU # | Retail Price | Synergy Price |
| Combi pack | 10 x 0.5 mL Mint, 10 x 0.5 mL Berry, 10 x 0.5 mL Unflavored | | 14801 | \$ 66.00 | \$59.00 |



Webshop: www.kettenbachusa.com | Website: www.kettenbach-dental.us

CALL 877-532-2123

*Expires December 31, 2025. Kettenbach LP 62-64 Enter Lane, Islandia, NY 11749

0210736_4424