



The right **composite**
for **every** situation.

Ecosite Elements · Ecosite One · Ecosite Bulk Fill · Ecosite Bond

A smile ahead together





Ecosite.

One family for everything.

It's the simple and reliable way of handling any required filling. Whatever the indication or technique, the Ecosite family from DMG offers everything you need:

- an innovative, **compact composite system** with excellent esthetics
- a 3mm one-shade **composite for posterior fillings**
- a 5mm **bulk fill composite for one-step posterior fillings**
- a **multi-purpose, light-cure, one-bottle universal adhesive**

Discover the modern art of composite with the Ecosite family of top-quality materials.





Ecosite Elements

Fundamental composites - esthetic results, amazing simplicity.

Ecosite Elements is the universal nanohybrid composite with a compact range of shades and opacities that offers exceptional handling, excellent esthetics, is precisely engineered and reliably efficient, for perfect anterior and posterior results!

- A compact selection of shades that covers the full VITA range
- Quick and easy shade matching
- Full range of anterior and posterior indications
- Ideal handling with Push-and-Flow effect
- Optimal adaptation to cavity walls; eliminates bubbles and cracks
- Patented NC-1 material technology for homogeneous distribution of particles
- High polishability

Ecosite One

Simply matches, always.

Ecosite One is the innovative one-shade composite that's setting new standards in the field of posterior restorations using just a single shade. The material's Push-and-Flow effect combined with accurate color matching, contribute to outstanding esthetics that will impress clinicians who opt for composite layering technology, and want to save valuable time in the process.

- Excellent esthetics and accurate color matching using only one shade
- High stain resistance*; reliable, long-term color stability
- Valuable time savings thanks to 3mm curing depth and 10 second rapid cure
- Push-and-Flow effect for excellent handling
- Effortless polishability for a high-gloss finish
- Low shrinkage stress

**data on file*

Ecosite Bulk Fill

For one-step posterior fillings up to 5mm—no capping layer needed.

- Reliable complete curing of 5mm in just 20 sec.
- Any standard VITA shade can be achieved using just one universal shade
- Highly reliable thanks to minimum shrinkage stress

Ecosite Bond

The light-cure universal bonding agent with total freedom.

- Modern 1-bottle universal bond
- Freedom with your etching mode: Total-etch, selective-etch or self-etch
- Suitable for direct restorations of all cavity classes

Ecosite Elements.

Simply expert results.

Ecosite Elements impresses with precise results in all areas of application. Fast, flexible, efficient.

Before



Dr. Ali Salehi, France, teeth 46 + 47.

After



Result with Pure A3.



Dr. Abdi Sameni, U.S.A., tooth 8.



Result with Layer Enamel Bleach + Highlight White.



Dr. Erik-Jan Muts, Netherlands, teeth 36 + 37.



Result with Pure A3.5 + Layer Enamel Medium + Highlight Brown.



Dr. Sarah Winter, U.S.A., teeth 8 + 9.



Result with Layer Enamel Bleach.

Push-and-Flow effect for reliable adaptation.

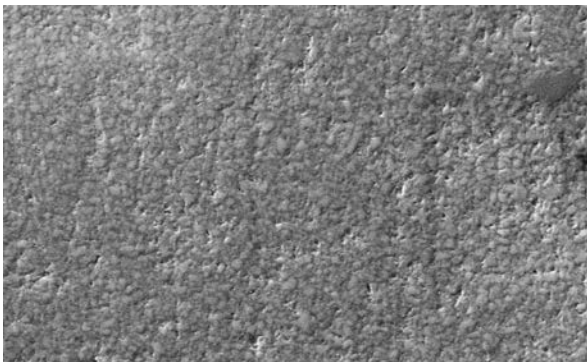
The Push-and-Flow effect is the secret to the excellent sculptability and handling of Ecosite Elements. Firm at the outset, it quickly becomes noticeably softer during sculpting, which enables optimal adaptation to the cavity walls and the precise reproduction of anatomical features.

It ensures that the material adapts to the respective requirements depending on the situation, and also helps avoid bubbles and cracks in the critical contact surfaces between the individual composite layers.

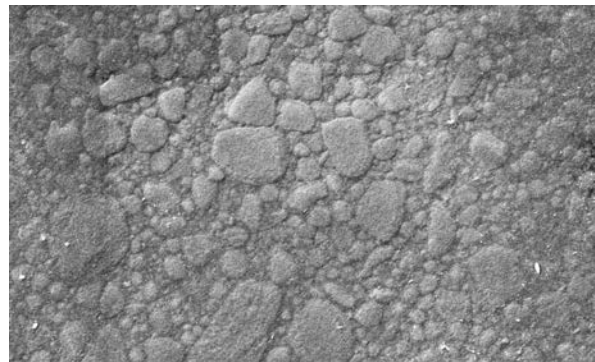
NC-1 material technology for exceptional handling and polishability.

Ecosite Elements features DMG-patented NC-1 technology (non-clustering). The result? Its fully state-of-the-art mechanical values are perfectly suited for the anterior and posterior regions.

Thanks to the precise silanization of the individual filler particles, NC-1 technology enables a homogeneous distribution and ensures an optimal working quality, maximum polishability and highly esthetic results.



Ecosite Elements
2000x magnification

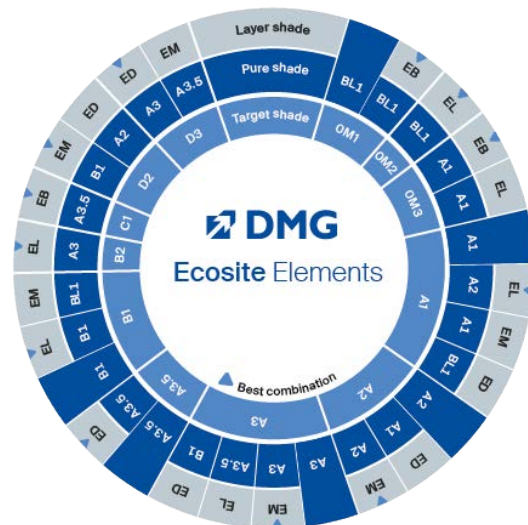
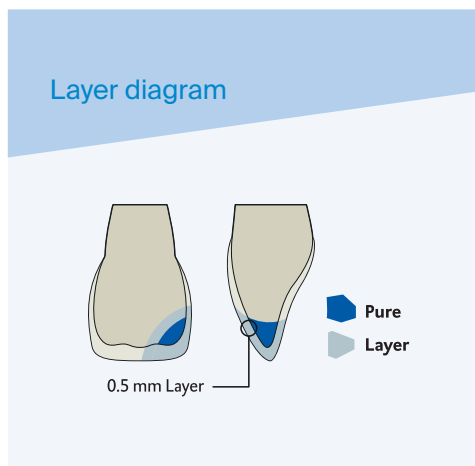


Filtek Supreme XTE (3M ESPE)
2000x magnification

Maximum variety of combinations. Every shade. Every technique.

The simplified shade combinations offered by Ecosite Elements and its ultra high-quality composition allow for reliable treatment across all indications. Whether a simple posterior filling using the Pure shades, an anterior restoration

that requires a high level of detail, monochromatic or layering technique, Ecosite Elements always provides an impressive, quick, high-gloss polish and an amazing chameleon effect.



Pure & Layer Shades

Pure shades can conveniently be used as either a dentin or enamel replacement, and Layer shades are used for enamel replacement or for layering in combination with Pure shades.

The compact selection of highly viscous, radiopaque composites include 5 VITA shades (A1, A2, A3, A3.5, B1), 1 bleach shade (BL1) and 4 enamel shades (EB, EL, EM, ED) in different opacities.

Highlight Shades

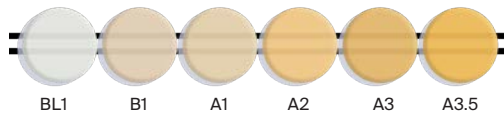
The OA2 and INC shades are radiopaque composites with optimum flow characteristics that are suitable for fissure sealing. OA2 is also used for veneering of slightly discolored areas and for creating ultimate tooth opacity, whereas INC has a high transparency, making it ideal for esthetic incisal edge design.

The White (W) and Brown (B) shades are flowable composites for customizing restorations: W is used for the reproduction of white spots and as an opaque covering layer, and B is used for the replication of brown spots.

The simplified shade system.

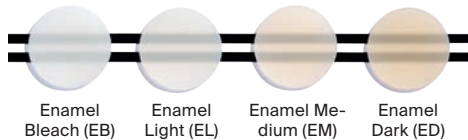


Pure shades



- 5 VITA shades + 1 Bleach shade in one opacity
- Highly viscous
- Highly radiopaque
- Monochromatic: dentin or enamel replacement
- Layering technique: enamel replacement
- Chameleon effect

Layer shades



- 4 enamel shades in 2 opacities
- Highly viscous
- Highly radiopaque
- Enamel replacement (monochromatic or layering technique)

Highlight shades



- 4 colors in 4 opacities
- Flowable consistency
- Masking of discolored areas
- Reproduction of white and brown spots and the replication of brown spots
- Esthetic incisal edge design
- Fissure sealing

Ecosite Bulk Fill. Reliable posterior fillings in one step.

Quick and easy - 5mm in 20 seconds

Designed to deliver superior esthetics and perfect adaptation with one quick light cure, posterior restorations couldn't be easier with Ecosite Bulk Fill.

Without any layering or need for a capping layer, the material guarantees reliable curing of up to 5mm at once - in just 20 seconds.

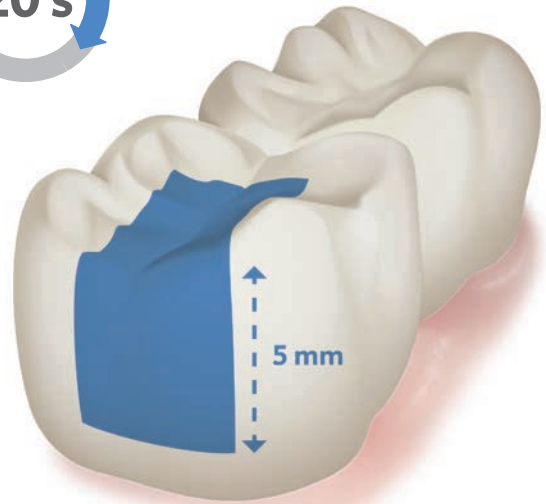
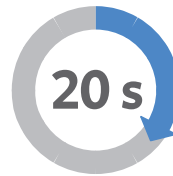
The composite's packable viscosity ensures optimal shaping (no run-off), reliable contact-point formation, significantly reduced reworking and easy post-processing.

Ideal handling and adaptation

Thanks to the Push-and-Flow effect, the packable Ecosite Bulk Fill also remains adaptable under shear stress, for smooth handling and maximally controlled adaptation to the cavity walls.

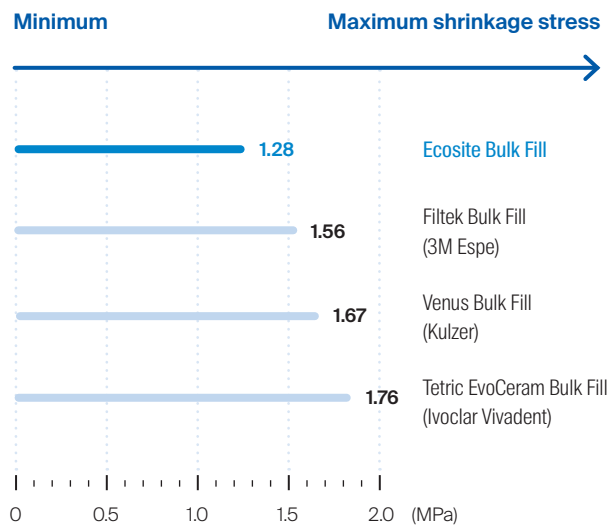
Low shrinkage stress

The material's minimal shrinkage stress is ideal for posterior composite restorations; it also has outstanding mechanical properties, and the special NC-1 filler technology with a mix of fine glass and nano-fillers makes it all possible.



Reliable curing in only 20 seconds

Minimum shrinkage stress



Källa: Prototech, 2013

Ecosite One. A faster procedure for dentists, a stunning result for patients.

Dr. Jeff Lineberry U.S.A.



Initial clinical situation.



Posterior restoration using Ecosite One.

Ecosite One is the innovative one-shade composite that's setting new standards in the field of posterior restorations using just a single shade. The material's Push-and-Flow effect combined with accurate color matching contribute to **outstanding esthetics**, which will impress clinicians who opt for composite layering technology and want to save valuable time in the process.

Features and benefits

- Excellent esthetics and accurate color matching with one shade
- High stain resistance* for reliable, long-term color stability (*data on file)
- Valuable time savings thanks to 3mm curing depth and 10 second rapid cure
- Push-and-Flow effect for excellent handling
- Effortless polishability for a high-gloss finish
- Low shrinkage stress

Use it confidently for

- Class I and II posterior fillings, including individual cusps
- Class V fillings
- Core build-up
- Extended fissure sealing
- Restorations in deciduous teeth



Ecosite Bond. The adhesive with total freedom.

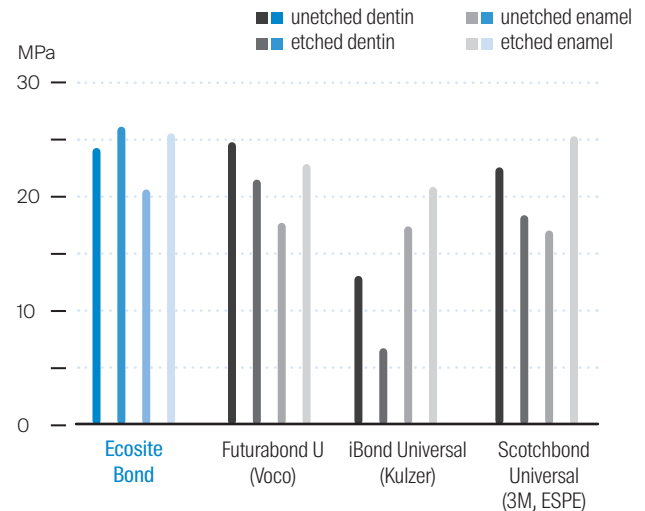
Ecosite Bond is a light-cure, 1-bottle universal bonding agent that gives you the **freedom to choose your etching mode**. Whether total-etch, selective-etch or self-etch, the choice is yours.

The same goes for the indication. It can be used for direct restorations of all cavity classes with light-curing composite materials.

Versatility meets reliability

Regardless of whether phosphoric acid etching or quick self-etch mode is used, Ecosite Bond demonstrates excellent bonding properties in any situation - on both enamel and dentin.

Bonding to enamel and dentin



Source: Internal measurements under ISO 29022, DMG, 2017

Safetip Dispenser Pro. For a perfect, comfortable grip.



The Safetip Dispenser Pro is the newest dispenser from DMG. Particularly ergonomic, it offers greater clinician comfort when performing composite restorations. This high-quality dispenser can be used for the direct application of all commercially available composite tips and is guaranteed to elevate your composite restorations!

The Ecosite collection at a glance.

Ecosite Elements Pure Refills

Syringe, 1 @ 4g ea:

Shade BL1 - 222840
Shade B1 - 222807
Shade A1 - 222841
Shade A2 - 222808
Shade A3 - 222809
Shade A3.5 - 222810

Safetips, 16 @ 0.25g ea:

Shade BL1 - 222850
Shade B1 - 222820
Shade A1 - 222851
Shade A2 - 222821
Shade A3 - 222822
Shade A3.5 - 222823

Ecosite Elements Layer Refills

Syringe, 1 @ 4g ea:

Shade EB (Enamel Bleach) - 222812
Shade EL (Enamel Light) - 222813
Shade EM (Enamel Medium) - 222814
Shade ED (Enamel Dark) - 222815

Safetips, 16 @ 0.25g ea:

Shade EB (Enamel Bleach) - 222825
Shade EL (Enamel Light) - 222826
Shade EM (Enamel Medium) - 222827
Shade ED (Enamel Dark) - 222828



Ecosite Elements Highlight Refills

Syringe, 1 @ 2g ea:

Shade INC (Incisal) - 222816
Shade OA2 (Opaque A2) - 222817
Shade W (White) - 222818
Shade B (Brown) - 222819



Ecosite One Refills

Safetips, 16 @ 0.25g ea:

Ecosite One Safetips - 222901

Syringe, 1 @ 4g ea:

Ecosite One Syringe - 222900



Ecosite Bulk Fill Refills

Safetips, 16 @ 0.25g ea:

Ecosite Bulk Fill Universal - 220756

Syringe, 1 @ 4g ea:

Ecosite Bulk Fill Universal - 220753



Ecosite Bond

1-5ml Bottle

Ecosite Bond - 220758



Safetip Dispensers

Safetip Dispenser - 220600

Safetip Dispenser Pro - 222829



A smile ahead
together

