

# VENUS BULK FLOW ONE



NEW!



## Venus® Bulk Flow ONE.

The first flowable one-shade bulk-filling composite!

**Always grab the right shade:** With the incredible shade-matching properties of Venus Bulk Flow ONE the restoration becomes invisible by blending into the surrounding dentition.

**Efficient handling:** Cavities are filled quickly and easily with increments of up to 4 mm without the need for an additional capping layer.

**Long-lasting restorations:** Low shrinkage stress, high flexural strength and wear resistance ensure durable restorations that withstand the mastication load in the posterior region.



# EFFICIENT & FAST

The new bulk flow composite Venus Bulk Flow ONE uses Kulzer's single color concept. The material combines the popular properties of our flow materials with high thixotropy, low shrinkage and high abrasion resistance.

## Use #1: Speed & Time Savings

Quick and easy restoration of cavities with a layer thickness of up to 4 mm - with only one material. There is no need for a separate top layer that supports the chewing force thanks to the high level of abrasion resistance. The ONE single-shade concept enables excellent color matching to the tooth environment - regardless of the patient's tooth color.

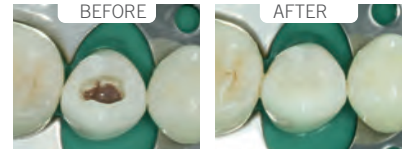
## Use #2: Efficient Handling

The special flow consistency with its thixotropic properties makes it possible the flow of undercuts as well as a simple, clean application and processing. The classic polymerisation time is always 20 seconds (per 4 mm) with a light intensity of at least 650 mw/cm<sup>2</sup>.

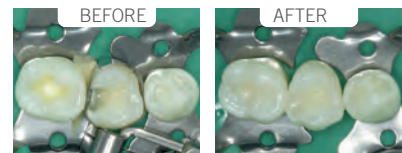
## Use #3: Durable Restorations

Low shrinkage, high flexural strength and resilience for long-lasting restorations that can withstand the high chewing loads in the posterior region. In addition, Venus Bulk Flow ONE offers high radiopacity (> 250% AL) and thus additional safety in X-ray diagnostics.

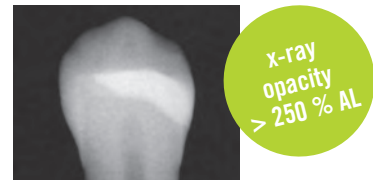
Image Source: Dr. Janine Schweppe, Kulzer GmbH, SCA, Germany



One-shade concept enables excellent color matching to the tooth environment (Example: cavity floor colored with mocha composite color for demonstration purposes).



Self-leveling (self-balancing), bulk Filling, no additional top layer necessary.



High radiopacity of more than 250% AL for reliable X-ray diagnostics

Images kindly provided by Dr. Schweppe

Get to know Venus Bulk Flow ONE and discover the variety of possible uses for this bulk flow material, which is unique in its kind.

## Indications at a glance:

- Class I, II, III and V direct supplies
- Cavity lining of Class I and II cavities
- Repair of direct and indirect restorations in combination with a suitable adhesive (such as iBOND Universal)
- Splinting of loosened teeth resulting from trauma or periodontal events
- Extended fissure sealing



Learn more about Venus Bulk Flow ONE here:



# TESTED & RELIABLE

**Venus Bulk Flow ONE** is the first bulk material to fulfill the vision of Prof. Dr. J. Manhart and Prof. Dr. Dipl.-Ing. N. Ilie. In 2015, he described...

... the ideal profile for bulk fill materials:

- large and reliable curing depth,
- low polymerization shrinkage (volume shrinkage in %) and low shrinkage stress (polymerization stresses in MPa),
- good adaptation of the material to the cavity edges and walls/floors,
- sufficient physical and mechanical properties (Bending strength, fracture toughness KIC, Young's modulus, Vickers hardness, etc.) also in deep cavity areas/-thick layer thicknesses,
- sufficient abrasion resistance,
- sufficient processing time for clinical application and occlusal modelling,
- adequate radiopacity.



(Source: knowledge compact 2015 9:27-42 DOI 10.1007/s11838-014-0225-z Published online: January 21, 2015

© Springer-Verlag and Free Association of German Dentists e.V. 2015)

Measurement of shrinkage stress after polymerisation of plastic composites after 24 hours

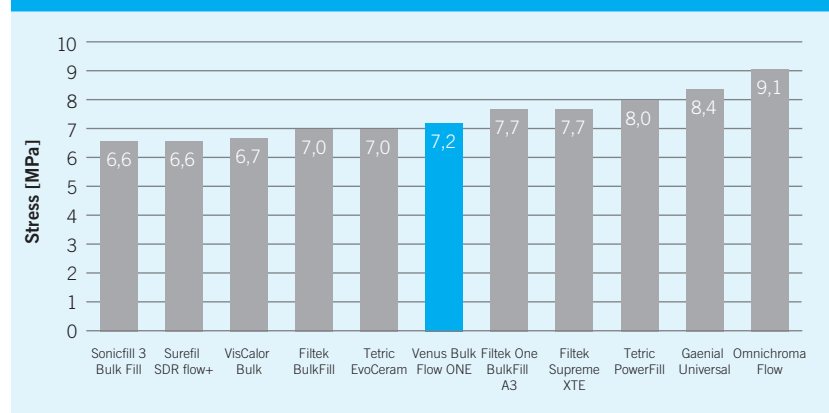


Image: Kulzer GmbH, SCA, Germany

## Shrinkage Stress

Reduced shrinkage stress level for reliable bulk fill application.

Measurement of wear by chewing simulation

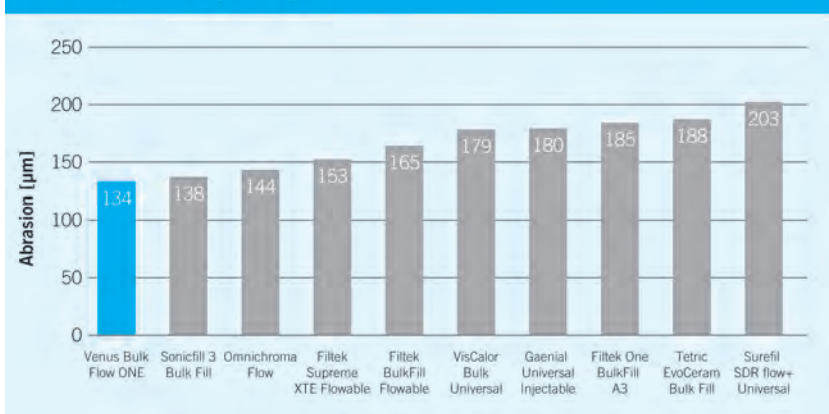


Image: Kulzer GmbH, SCA, Germany

## Abrasion Stability

Venus Bulk Flow ONE is suitable for posterior restorations, including occlusal surfaces.



## Venus Bulk Flow ONE

ONE shading meets bulk filling.



BULK & BODY TECHNIQUE:

- 1 Venus Bulk Flow ONE
- 2 + e.g. Venus Diamond/Pearl



BULK FILLING TECHNIQUE:

- 1 Venus Bulk Flow ONE

## Venus Bulk Flow ONE Product Range

Darby Item #	Description	Content
<b>Venus Bulk Flow ONE – Refills</b>		
525-4489	<b>VENUS BULK FLOW ONE 1 x 2g/Syringe</b>	1 x Syringe 2g, 5x Cannulas, 1 x Instruction
525-4490	<b>VENUS BULK FLOW ONE 2 x 10x .20g/PLT</b>	2 x 10x .20g PLT, 1 x Instruction
<b>Venus Bulk Flow ONE – Value Packs</b>		
525-4491	<b>VENUS BULK FLOW ONE VALUE-KIT Syringe</b>	10x 2g Syringe Venus Bulk Flow ONE, 10x 5 Cannulas, 1 x Pictorial Card, 1 x Instructions
525-4492	<b>VENUS BULK FLOW ONE VALUE-KIT PLT</b>	80x 0.20g PLT, 1 x Pictorial Card, 1 x Instruction