

CLEARFIL MAJESTY™ ES-2 **Universal**

INTELLIGENT SIMPLIFICATION



CLEARFIL MAJESTY™ ES-2

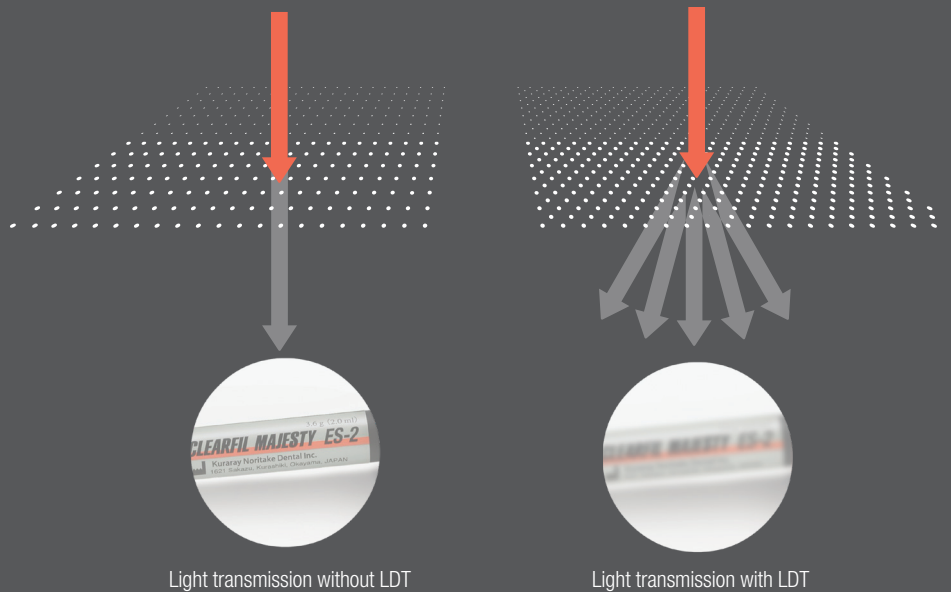
Universal shade concept

ONE SHADE FOR ALL POSTERIOR RESTORATIONS

How many different shades of composite do you need in the posterior region? If you opt for CLEARFIL MAJESTY™ ES-2 Universal, a single shade will do the trick. The go-to solution for common posterior restorations, independent of the color of the underlying and adjacent tooth structure.

NO OPAQUER NEEDED!

A blocker or opaquer is not needed. This is due to the material's specific level of translucency and the integration of Kuraray Noritake Dental's **Light Diffusion Technology (LDT)**, which makes restorations diffuse light in a similar way tooth structure does. As a consequence, the material integrates easily and smoothly into the surrounding tooth structure and preparation margins become virtually invisible.



FOR YOU, THIS MEANS

- ✓ Simplified shade selection without a shade guide
- ✓ Efficient and comfortable procedure (single-shade technique, no blocker or opaquer)
- ✓ Fewer steps for consistent, predictable results
- ✓ Appealing outcomes that last

CLEARFIL MAJESTY™ ES-2 Universal offers the same superior mechanical properties as CLEARFIL MAJESTY™ ES-2 CLASSIC:

Flexural Strength:	118 MPa
Filler Load:	78 wt%
Compressive Strength:	347 MPa
Volumetric Shrinkage:	1.9 %
Curing Depth:	2.0 mm
Working time under ambient light:	270 sec.

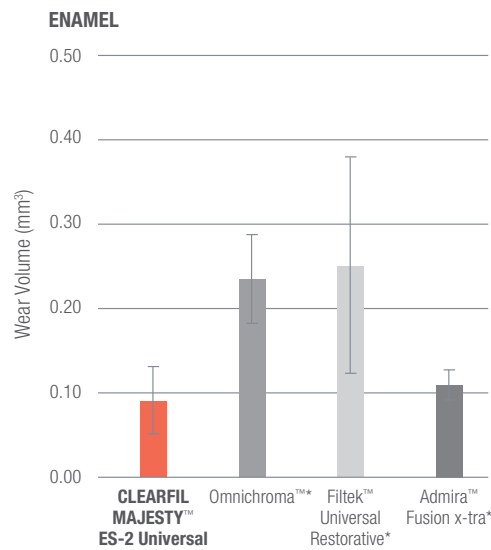
Source: Kuraray Noritake Dental Inc.

SUPERIOR PROPERTIES FOR POSTERIOR RESTORATIONS

The great majority of all direct composite restorations are created in the posterior region, where the following properties are particularly important:

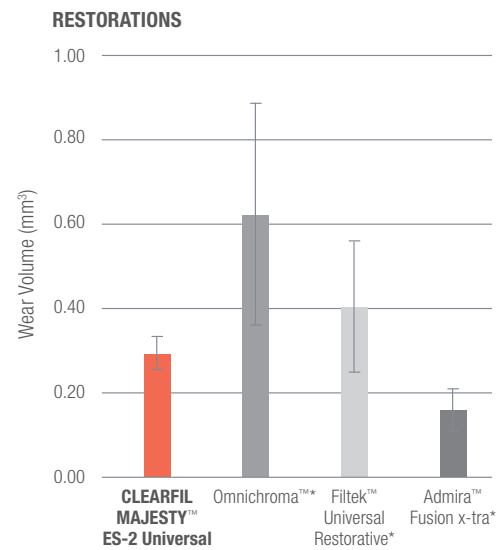
- excellent wear resistance properties
- wide blending effect
- low shrinkage stress

CLEARFIL MAJESTY™ ES-2 Universal accomplishes this task with one universal shade.



CLEARFIL MAJESTY™ ES-2 Universal (red) shows less wear of opposing enamel than competitive materials tested.

Test Conditions: Leinfelder wear test at room temperature in water.
Load: 7.9 kg/cm², 400,000 cycles.
Antagonist: bovine enamel, polished with #3000 paper. Material: polished with #3000 paper.



CLEARFIL MAJESTY™ ES-2 Universal (red) shows less wear than Omnichroma (Tokuyama) and Filtek Universal Restorative (3M).

Source all graphs: Kuraray Noritake Dental Inc.

*Not a trademark of Kuraray Noritake Dental Inc.

SHADE COMPARISON TABLE

The Universal shade is recommended to cover all class-I & II restorations in the range of the classic VITA shade guide.

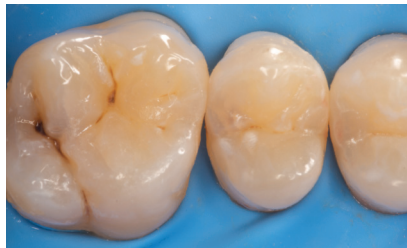
SHADE CATEGORY	CAVITY CLASS	SHADE				
		A1 B1, B2	A2 D2, C1	A3 C2, D3	A3.5 B3, B4	A4 C3, C4
Universal	I	U Universal				
	II					
	III	U Universal (Available for Class III, IV, and V, but the esthetics may not be suitable depending on the size and translucency.)				
	IV					
	V					

CLINICAL CASE

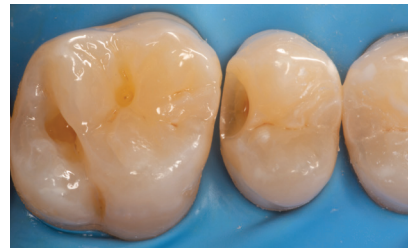
SIMPLIFIED POSTERIOR RESTORATION PROCEDURE ELIMINATING SHADE SELECTION

by Dr Piotr Marchewka

Efficiency is an important factor when it comes to restoring posterior cavities with resin composite. It may be achieved by selecting a material that eliminates the need for shade selection and by the use of simplified layering techniques. For example, in the clinical case below, a maxillary first molar and second premolar were restored with CLEARFIL MAJESTY™ ES-2 Universal (U) using the single-shade technique.



Initial situation. Carious lesions are detected on the occlusal and palatal surfaces of the first molar, and in the distal aspect of the second premolar. Rubber dam was placed for moisture control.



Appearance of the teeth following caries removal, selective etching of the enamel, and application of CLEARFIL™ SE BOND 2.



Sectional matrix in place. It is used to facilitate the creation of a proper interproximal contact.



Occlusal view of the final restorations produced with CLEARFIL MAJESTY™ ES-2 Universal.

PRODUCT ASSORTMENT

CLEARFIL MAJESTY™ ES-2 Universal SYRINGE

#3181-KA CLEARFIL MAJESTY™ ES-2 Universal (U)
1x Syringe 2.0ml (3.6g)



CLEARFIL MAJESTY™ ES-2 Universal PLT

#3191-KA CLEARFIL MAJESTY™ ES-2 Universal (U)
20x 0.25g PLT/pack



YOUR CONTACT

Kuraray America, Inc.

32 Old Slip Phone (800) 879-1676
FL 7 Fax (888) 700-5200
New York, NY 10005 E-Mail info@kuraraydental.com
Website kuraraydental.com

- Before using this product, be sure to read the Instructions for Use supplied with the product.
- The specifications and appearance of the product are subject to change without notice.
- Printed color can be slightly different from actual color.

"CLEARFIL" and "CLEARFIL MAJESTY" are trademarks of KURARAY CO., LTD.



Kuraray Noritake Dental Inc.
1621 Sakazu, Kurashiki, Okayama 710-0801, Japan
Website www.kuraraynoritake.com

R& Only

