



Smile Created by  
Douglas A. Terry, DDS  
using G-ænial™ Composites

# TRANSFORM THE WAY YOU WORK WITH GC COMPOSITES

For additional information on this case see *Esthetic and Restorative Dentistry: Material Selection and Technique*. 3rd edition. Chicago, IL; Quintessence Publishing: 2018.

## G-ænial™ Composite Technique Guide





## INTRODUCTION

### Transform the way you work

GC's resin composite products are game changers within the industry. Our High Density Resin formulas provide the ultimate in flexural strength, wear-resistance, and color/gloss retention. They provide a high esthetic, with a chameleon effect that blends in naturally with existing dentition. Handling is intuitive and easy, and adaptation to the cavity helps to ensure a secure marginal seal, which resists development opportunities for secondary caries. Restorations completed with GC's proprietary resin formulas allow you to be artistic and creative with your work, while providing your patient with a solution that looks just as natural as the day it was placed.

This technique manual provides several creative ways to use GC's resin composite products to handle cases from the simple to the more complex. Step-by-step illustrations suggest how GC's products combine to provide you with lifelike results that will last for many years to come.

See for yourself how GC's resin composites can help you delight your patients, while improving your overall productivity. The possibilities are only as limited as your imagination.







## CASE #1: CLASS II RESTORATION

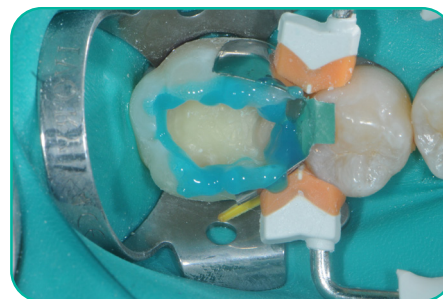
Using G-ænial™ BULK Injectable, with G-ænial Sculpt® cap to match surrounding dentition



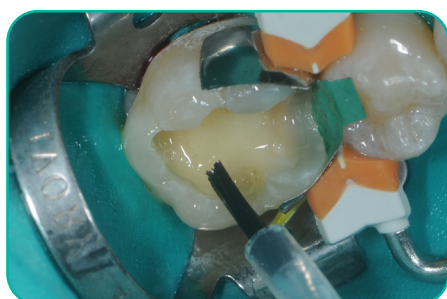
Pre-op with rubber dam isolation



Completed preparation



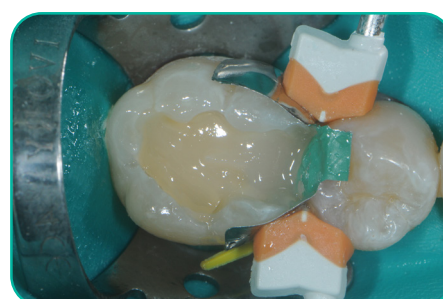
Selective etch technique



G-Premio BOND™ application



Placing G-ænial™ BULK Injectable  
(Shade A2)



First layer of G-ænial™ BULK  
Injectable light cured



Placing G-ænial Sculpt® as a capping  
layer (Shade A2)



Sectional matrix removed



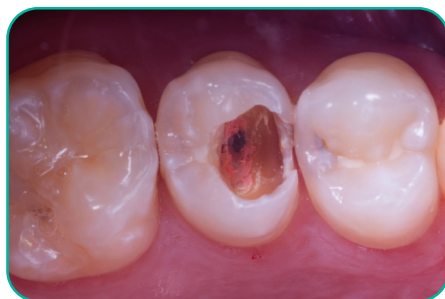
Final restoration after occlusal  
adjustment and polish

Dentistry and photography courtesy of Dr. Thomas Dudney



## CASE #2: RESTORATION OF DEEP CLASS II LESION

Using layering technique, with G-ænial™ Universal Injectable and G-ænial™ BULK Injectable



Initial situation



Absolute isolation, cavity free of decay



Selective etching of the enamel



Apply 2 layers of G-Premio BOND™



Adhesive light cured with The Light



Base layer with G-ænial™ BULK Injectable (Shade A1) - Garrison Sectional Matrix placed



Create the proximal wall with G-ænial™ Universal injectable (Shade JE)



Layered cusp by cusp due to G-ænial™ Universal Injectable's easy manipulation (Shade A1)



Polished with an ideal contact point and esthetic result

Dentistry and photography courtesy of Dr. Victor Cedillo Felix





## CASE #3: RESTORATION OF A SMALL CERVICAL CLASS V LESION

Using G-ænial™ Universal Injectable



Initial Class V carious lesion



Cavity preparation with high speed handpiece



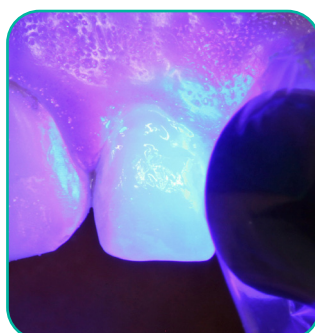
Additional cavity preparation with micro-etcher (50u Aluminum Oxide)



Selective etching of enamel to create "Super Dentin" layer at gingival margin



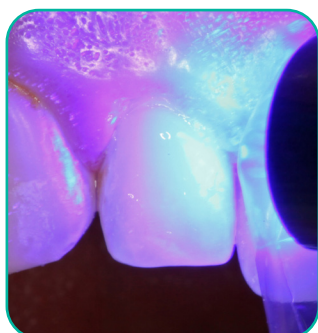
Application of G-Premio BOND™ universal adhesive



Light curing of adhesive for 10 seconds



Placement of G-ænial™ Universal Injectable (Shade A2) in 3 layer increments



Light curing for 20 seconds for each layer



Finishing with carbide bur - anatomic emergence profile created with finishing bur



Polishing with rubber cup



Final polished Class V restoration

Dentistry and photography courtesy of Dr. Robert Marus



## CASE #4: RESTORATION OF MAXILLARY ANTERIOR TEETH

Using G-aenial™ Universal Injectable



Preoperative facial view with wear and fractures on the incisal edges of the maxillary anterior teeth



Diagnostic wax-up developed to establish new functional and esthetic parameters; EXACLEAR™ matrix fabricated to replicate the diagnostic wax-up



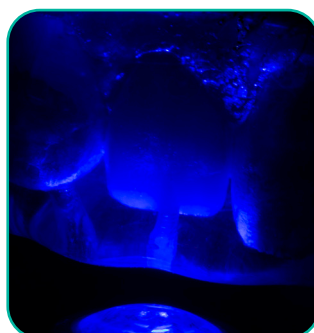
A conservative intra-enamel preparation was performed on the facial and inciso-lingual surfaces



An adhesive surface preparation was accomplished using the total-etch technique with a universal bonding agent G-Premio BOND™



EXACLEAR™ matrix designed from the diagnostic wax-up was placed over the anterior segment of the maxillary arch, G-aenial™ Universal Injectable (Shade A1) was injected through a small opening above the prepared tooth via the inverse injection layering technique



Composite was cured through the clear resin matrix on the incisal, facial, and lingual aspects for 40 seconds each



Upon removal of the matrix, the composite sprue was removed with a 30-fluted carbide finishing bur



## CASE #4: RESTORATION OF MAXILLARY ANTERIOR TEETH

Using G-ænial™ Universal Injectable



Excess polymerized resin composite was removed by scoring with a scalpel blade and the excess polymerized material removed with a scaler



Initial facial contouring was performed using a 30-fluted needle-shaped finishing bur



Incisal and proximal contouring and smoothing were accomplished with finishing and polishing disks



Facial surfaces were polished with a prepolishing diamond-impregnated silicone wheel



A high-shine silicone polishing wheel was used to increase the smoothness of the resin composite restorations



Facial surfaces were polished with silicone points



A goat-hair wheel and diamond polishing paste were used to further refine the surface luster of the resin composite



Completed resin composite restorations with optimal anatomical form and color integration

**Dentistry and photography courtesy of Dr. Douglas A. Terry**

For additional information see *Esthetic and Restorative Dentistry: Material Selection and Technique*. 3rd edition. Chicago, IL; Quintessence Publishing: 2018.  
*Restoring with Flowables*. Chicago, IL; Quintessence Publishing: 2017.



## CASE #5A: RESTORATION OF A CLASS II LESION

Using G-ænial™ BULK Injectable, employing the Cone filling technique



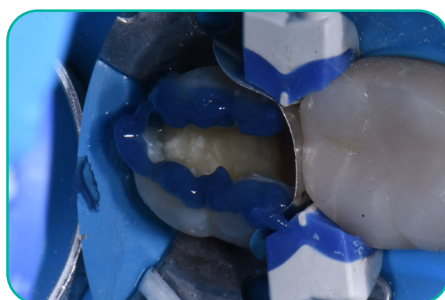
Pre-op with recurrent decay



Initial preparation



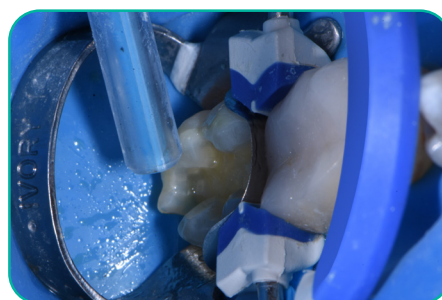
Matrix application



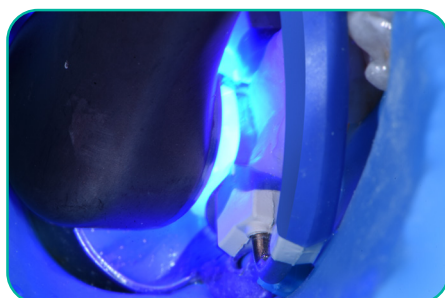
Selective etch



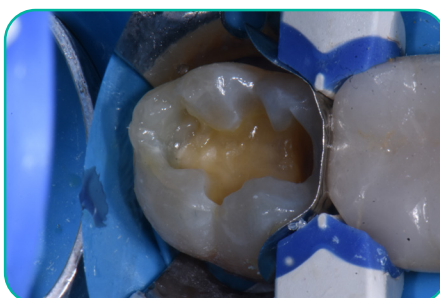
Bonding agent application



Air thinning of bonding agent



Curing light application



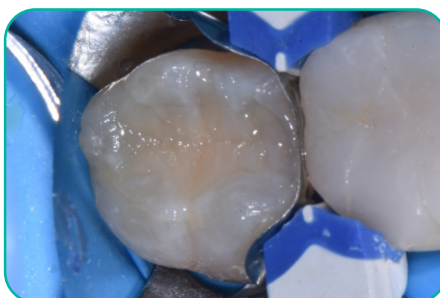
Proximal box walls created



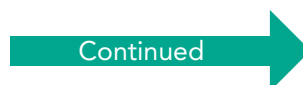
G-ænial™ BULK Injectable application



G-ænial BULK™ Injectable in place



Final layer of G-ænial Sculpt®





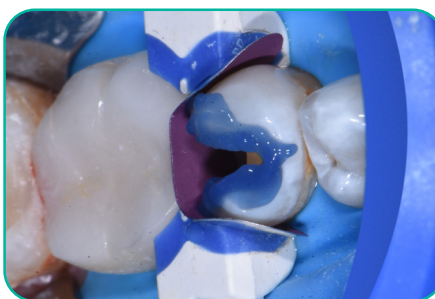


## CASE #5B: RESTORATION OF A CLASS II LESION

Using G-ænial™ BULK Injectable, employing the Cone filling technique



Initial preparation



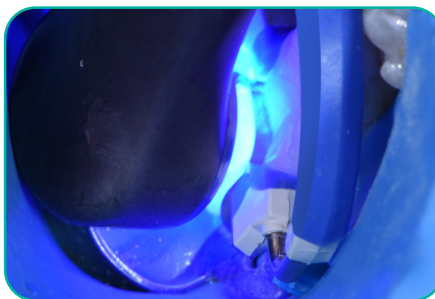
Selective etch



Bonding agent application



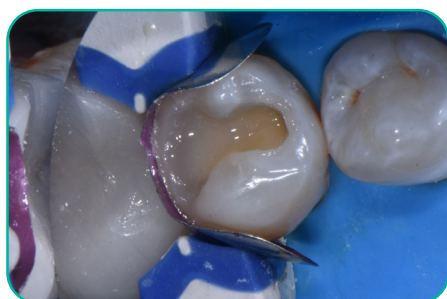
Air thinning of bonding agent



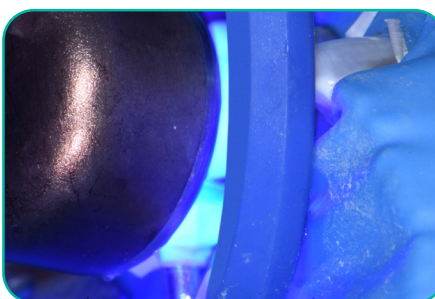
Curing light application



G-ænial™ BULK Injectable application



G-ænial™ BULK Injectable in place



Curing light application



Final restorations using G-ænial™ BULK Injectable and G-ænial Sculpt®

Dentistry and photography courtesy of Dr. Jeffrey Lineberry

*GC*

NOTES





# NOTES





Create strong and esthetic restorations of your own  
with GC's unique High Density Resin composites!

## G-aenial™ Universal Injectable

### G-aenial™ Universal Injectable Syringe Refills

Contains: Two 1.7g (1.0mL) syringes, 10 long dispensing tips and 10 short dispensing tips.

012364 A1	012365 A2	012366 A3
012367 A3.5	012368 A4	012369 B1
012370 B2	012371 CV	012372 CVD
012373 AO1	012374 AO2	012375 AO3
012376 JE	012377 AE	012378 XBW
012379 BW		

### G-aenial™ Universal Injectable Unitip Refills

Contains: 15 0.16mL unitips.

012348 A1	012349 A2	012350 A3
012351 A3.5	012352 A4	012353 B1
012354 B2	012355 CV	012356 CVD
012357 AO1	012358 AO2	012359 AO3
012360 JE	012361 AE	012362 XBW
012363 BW		

## G-aenial™ BULK Injectable

### G-aenial™ BULK Injectable Syringe Refills

Contains: One 3.4g (2.0mL) syringe, 20 Dispensing Tips III (plastic) and one light protective cap.

012394 A1	012395 A2
-----------	-----------

### G-aenial™ BULK Injectable Unitip Refills

Contains: 15 0.16mL unitips.

013113 A1	013114 A2
-----------	-----------

## G-aenial Sculpt®

### G-aenial Sculpt® Syringe Refills

Contains: One 2.0mL Syringe.

009152 A1	009153 A2	009154 A3
009155 A3.5	009156 A4	009168 AE
009161 AO1	009162 AO2	009163 AO3
009157 B1	009158 B2	009159 B3
009164 BW	009160 C3	009166 CV
009167 JE	009165 XBW	

### G-aenial Sculpt® 20-Unitip Refills

Contains: 20 0.16 mL unitips.

009169 A1	009170 A2	009171 A3
009172 A3.5	009173 A4	009174 B1
009175 B2	009176 B3	009177 C3

### G-aenial Sculpt® 10-Unitip Refills

Contains: 10 0.16mL unitips.

009185 AE	009178 AO1	009179 AO2
009180 AO3	009180 BW	009183 CV
009184 JE	009182 XBW	

## G-Premio BOND™

### 012691 G-Premio BOND™ Kit

Contains: One 5mL bottle, 50 disposable applicators (fine), 20 disposable dispensing dishes.

### 012696 G-Premio BOND™ 5mL Bottle Refill 009276 G-Premio BOND™ Unit Dose Package

Contains: 50 unit doses (0.1 mL each).