

Transform workspace productivity with unmatched solutions

Dell Parts & Upgrades Flipbook

Table of CONTENTS



06

DELL POWER

Reliable power for dependable performance

Explore More



14

DELL BATTERIES

Newest technology for lasting productivity

Explore More



20

DELL MEMORY

Improve performance, stability and productivity

Explore More

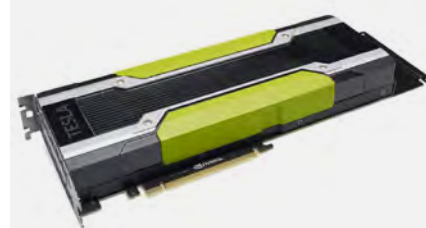


30

DELL STORAGE

Faster, reliable and efficient

Explore More



46

DELL GRAPHICS CARDS

Increased performance and productivity

Explore More



THE RIGHT COMPANION FOR YOUR WORKFORCE.

As your computer ages, the demand on system resources increases at the same time as performance diminishes. New software and security bundles get loaded on your system constantly, and all of this data gets dumped into storage and dragged into DRAM, although the DRAM and storage itself aren't growing. Consequently, the storage (SSD/HDD) and DRAM perform slower as the capacity fills up and batteries lose efficiency as they get older. The best way to battle performance loss and keep your system running at optimum efficiency is to upgrade with high-quality Dell Parts. And the only way to buy Dell-qualified parts is to buy Dell-branded parts.

At Dell Technologies, we believe in building a long-term relationship with our customers based on values and trust. We understand our customers' requirements and strive to offer cost-effective solutions that fit their budget.

Advantages of buying Dell Parts & Upgrades:



Extended system life



Improved performance



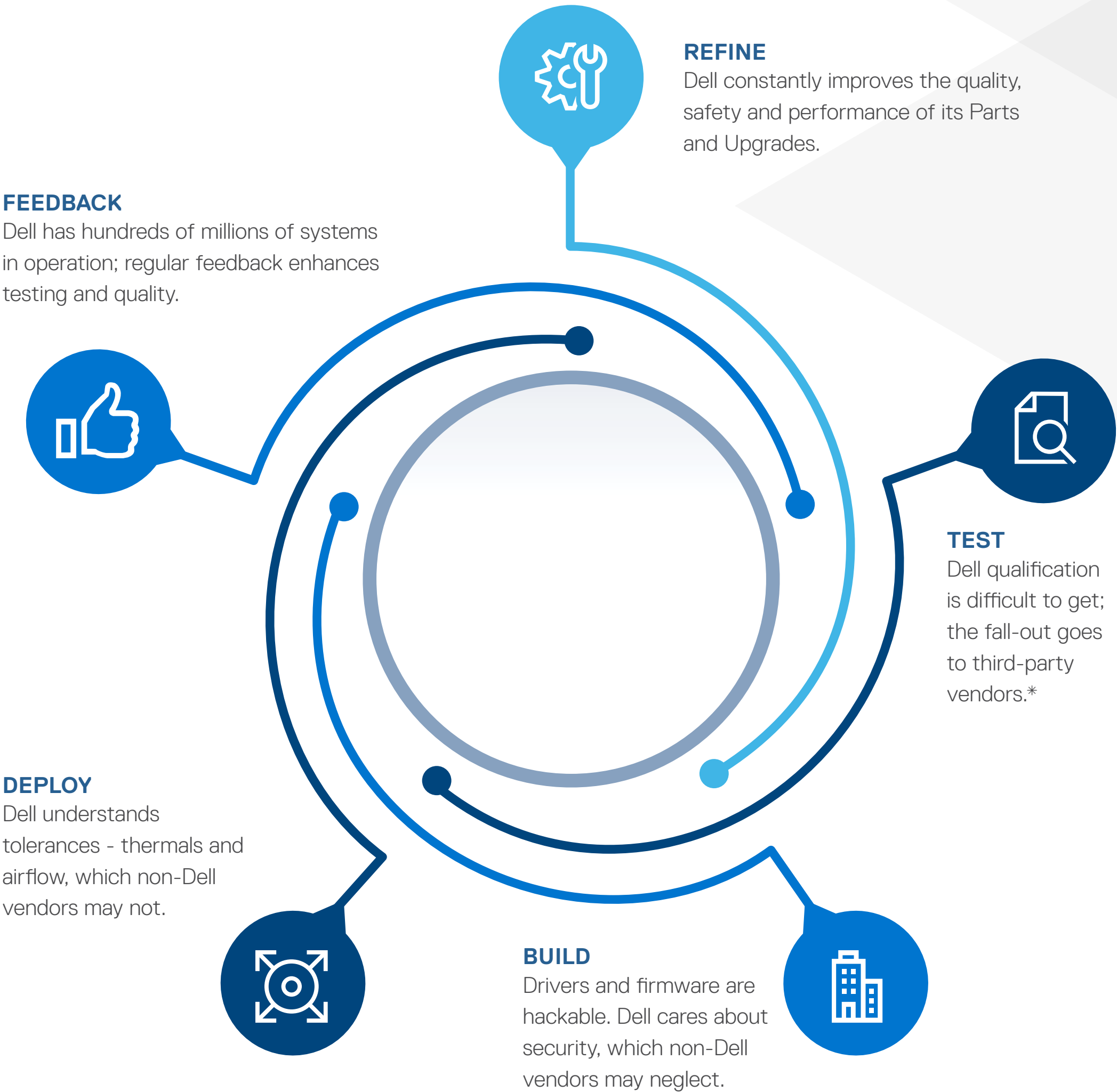
Enhanced user experience



Budget-friendly



New isn't always better – Keep your old system while optimizing its speed and efficiency



*Dell demands only the highest quality components. The risk of a bad part to Dell is high as an entire system or a whole fleet of systems could be returned. Contrarily, the risk to third-party vendors is low as they offer low-quality products and have less at stake.



DELL POWER

Reliable power for dependable performance

Get the power you need to stay up and running at all times. Dell Technologies offers a wide range of power adapters that deliver high-speed, efficient charging – at home, in the office, or on the move – so you can save time while operating at peak productivity. Excellent-quality protection features will safeguard your device while the widest compatibility with Dell systems will make connecting your laptop a breeze.

Looking for the right adapter for your system? Find it with Power Selector, [HERE!](#)

DELL ADAPTER TYPES

Barrel adapter - 4.5MM

Available in 45, 65, 90, and 130 watt versions

Dell Slim Power Adapter - 65 Watt 4.5mm with 6 ft Power Cord link to Selector

Stop lugging your AC adapter back and forth between home and office. Get a second AC adapter for your notebook and keep one in the office and one for home or travel.

Features

- **Device Type:** Power adapter - external
- **Power Capacity:** 65 watt
- **Cables Included:** Power cable 6 ft

Explore More 



Barrel adapter – 7.4MM

Available in 45, 65, 90, 130, 180, 240, and 330 watt versions

Dell Slim Power Adapter - 65 Watt 7.4mm with 1 Meter Power Cord and AC Duckhead

Packed with 65 watt power, this adapter enables you to charge your Dell laptop, fast and securely – powering your workday for long.

Features

- **Device Type:** Power adapter - external
- **Power Capacity:** 65 watt
- **Input Connectors:** 1 x power 3-pole
- **Output Connectors:** 1 x power DC jack
- **Manufacturer Warranty:** 1 year
- **Barrel Size:** 7.4 mm

Explore More 



Type C adapter

Available in 45, 65, 90, 130 watt versions

Dell Slim Power Adapter - 65 Watt Type-C with 1 Meter Power Cord

The 65 watt power adapter from Dell is specially designed to meet the power needs of your modern lifestyle. Every detail has been carefully crafted - from soft, bendable cable to compact design.

Features

- **Device Type:** AC adapter with 3 prong plug
- **Power Provided:** 65 watt
- **Cable Included:** 1 meter power cord

Explore More



Barrel Auto-Air adapters

Barrel Auto-Air adapters - 4.5mm and 7.4mm

Dell Auto/Air Adapter 90 watt 7.4mm and 4.5mm

Power up and stay productive on the road, in flight or in your office with one device – the Dell™ Auto/Air Adapter. It is an all-in-one, DC-DC device that will power your Dell Notebooks. It plugs into auto outlet or air outlet for long-lasting performance.

Features

- **Device Type:** Auto/Air adapter
- **Power Provided:** 90 watt
- **Cable Included:** Power cable
- **Output:** 19V

Explore More





CyperPower 900 Watt / 1500 VA , 12 V , LCD UPS Tower

A mini-tower UPS with line interactive topology, the CyberPower Intelligent LCD CP1500AVRLCD provides battery backup (using simulated sine wave output) and surge protection for desktop computers, workstations, networking devices, and home entertainment systems.

Explore More





DELL BATTERIES

Newest technology for lasting productivity

Power your laptop or mobile devices for lasting performance and work confidently while on the go. Dell Technologies brings you rigorously tested, newest technology-enabled batteries that offer longer run time and are secure to use, anytime anywhere. Get portable power for your devices with Dell Technologies Power Banks designed to offer uninterrupted productivity when you're out and about.

Not sure which battery will be the right fit? Find the most compatible battery for your system with Battery Selector, [HERE!](#)



Dell 68 WHr 4-Cell Primary Lithium-Ion Battery

Built to meet your hybrid work needs, this 4-Cell Lithium-Ion Battery from Dell™ delivers up to 68 WHr capacity, letting you work non-stop, wherever you are.

Explore More



Dell 6-Cell 95 WHr Internal Primary Lithium-Ion Battery

Always on the go? No more worries about running out of battery power! You can power your laptop with this 6-Cell Lithium-Ion Battery from Dell™. With a capacity of up to 95 WHr, the battery lets your laptop work seamlessly when you are on the move.

Explore More



Dell 42 WHr 3-Cell Primary Lithium-Ion Battery

Leverage the high-performance output of this 3-Cell Lithium-Ion Battery from Dell. With a capacity of up to 42 WHr, the battery lets your laptop cut the cord and work mobile.

Explore More



Dell 4-Cell 55 WHr Internal Primary Lithium-Ion Battery

Rely on this high-performance 4-Cell Lithium-Ion Battery from Dell™ with a capacity of up to 55 WHr and leave aside all your power backup worries, when on the go.

Explore More



Dell Notebook Power Bank Plus – 65WH PW7015L

With up to 65W power delivery, the large 65Wh, 6-cell power capacity keeps your laptop and mobile devices running longer. Extend the run time of your Dell laptop, plus up to a pair of mobile devices at the same time via its two USB ports.

Explore More ➔



Dell 68 WHr 4-Cell Primary Lithium-Ion Battery for Latitude 5400/5500/3540

Always on the go? No more worries about running out of battery power! You can power your laptop with this 4-Cell Lithium-Ion Battery from Dell™ . With a capacity of up to 68 WHr, the battery lets your laptop work seamlessly when you are on the move.

Explore More ➔



Dell Notebook Power Bank Plus – USB-C, 65WH PW7018LC

World’s first notebook power bank to charge the widest range of USB-C laptops¹, as well as mobile devices, thanks to its wide voltage profiles and up to 65W power delivery. Extend the run time of your notebook and simultaneously charge your smartphone via the secondary USB-A port.

Explore More ➔



¹Get an additional run time of up to 16 hours on your Dell XPS 9370.



DELL MEMORY

Improve performance, stability and productivity

Supercharge your performance with a Dell Memory upgrade engineered, tested and customized for your Dell system. Enhance memory and take your system's efficiency to the next level – in one of the most cost-effective ways possible.

SODIMMs – Dell Laptop Memory

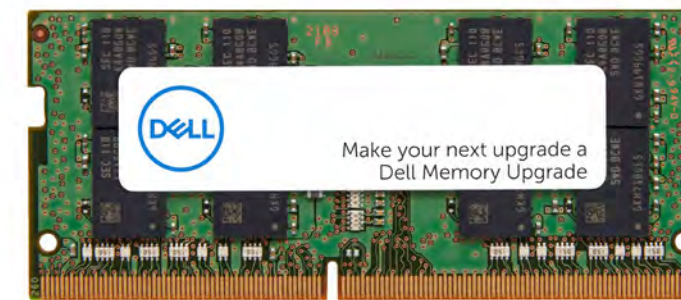


Mobile and hybrid workplace users benefit from laptop memory upgrades. New software and advanced applications can exceed the capabilities of originally installed components. Utilize our Memory Selector to ensure the correct modules for your product.

Latitude and Precision Mobile Workstation laptops utilize SODIMM memory.

SODIMM DRAM memory modules span DDR3, DDR4 and DDR5 generations supporting speeds up to 4800MHz.

Explore More →



UDIMMs – Dell Desktop Memory

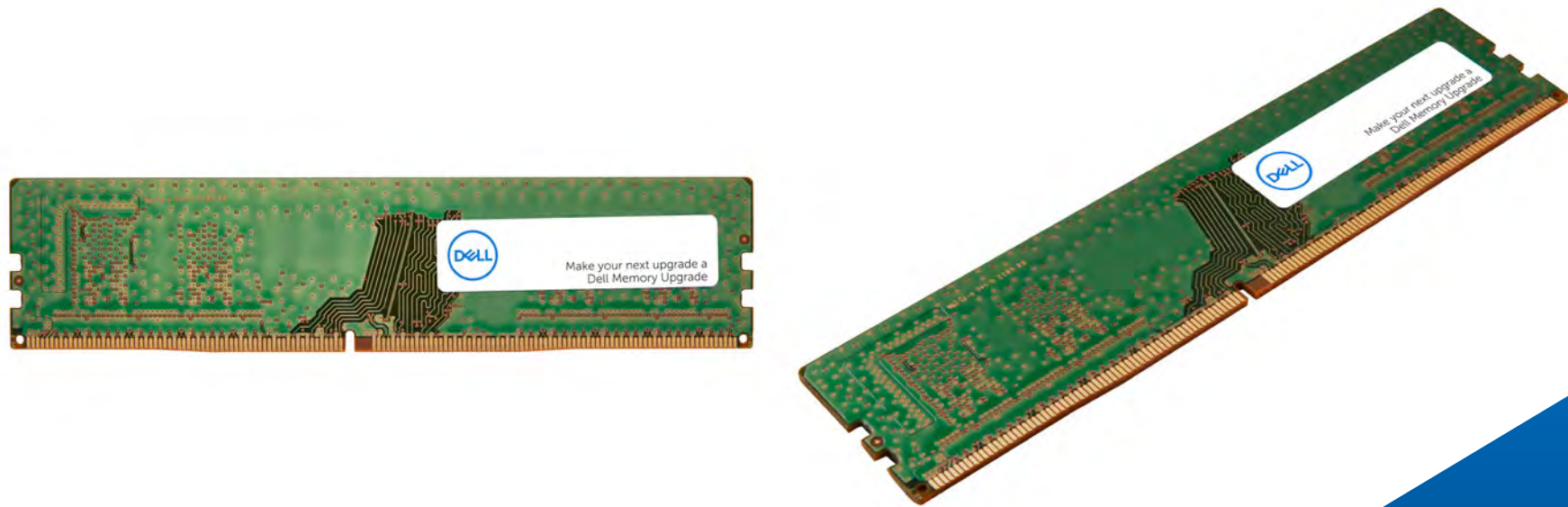


Additional desktop memory increases system performance, user productivity and reduces downtime. Dell sources the highest quality memory from industry supply chain partners. Utilize our Memory Selector to ensure the correct modules for your product.

OptiPlex and Precision Fixed Workstation desktops utilize UDIMM memory.

UDIMM DRAM memory modules span DDR3, DDR4 and DDR5 generations supporting speeds up to 4800MHz.

Explore More 



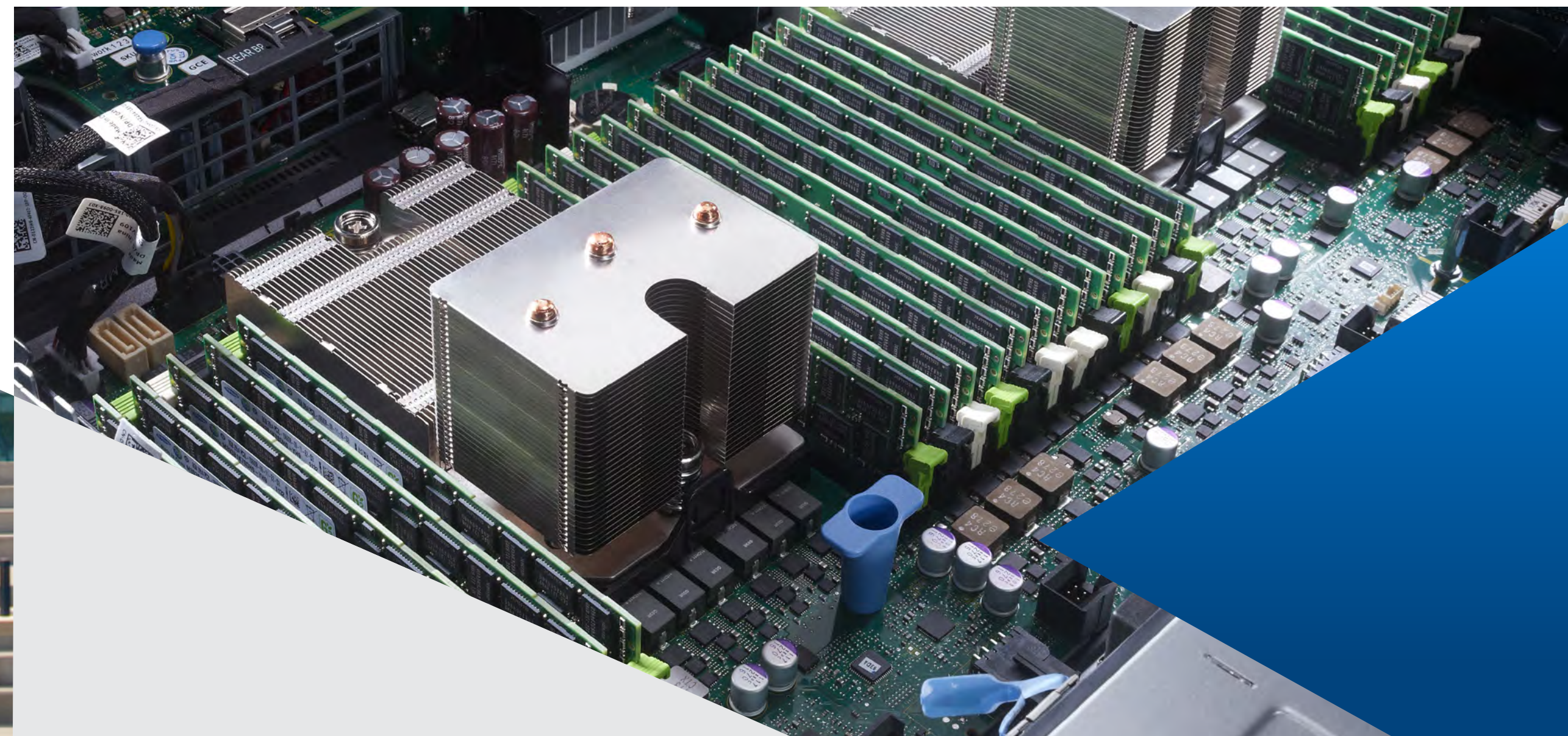
ECC DIMMs – Error Correction Code Memory

Enterprise-grade memory modules used in Fixed and Mobile Precision Workstations and PowerEdge servers.

Dell ECC SODIMMs, UDIMMs and RDIMMs.

Specialized memory valued by professionals and businesses with critical data. Modules detect and correct memory errors reducing crashes associated with data corruption. Many Fixed and Mobile Precision Workstation products offer ECC memory options. ECC must be installed in qualifying products and cannot be mixed with non-ECC modules. Utilize our Memory Selector to ensure the correct modules for your product.

Explore More



DELL DDR5 – Next Generation Memory

Next-level performance capable of 4800MHz

Many of the newest PCs leverage DDR5 memory. Compared to DDR4, DDR5 realizes higher clock speeds, greater module densities and superior performance. Utilize our Memory Selector to ensure the correct modules for your product.

Explore More 






DELL STORAGE

Faster, reliable and efficient

Level up your system efficiency and overall computing experience with Dell Technologies solid state drives. Multi-task seamlessly and never be bogged down by system downtime or slow, heavy processing. With Dell SSDs, you can enjoy plenty of storage capacity while accelerating your system performance – be it boot ups, sleep, data accessibility or data transfer speed.


DELL SOLID STATE DRIVES

Increase the storage capacity of your Dell™ System with Solid State Hard Drives from Dell.




MORE DURABLE

Feature a non-mechanical design of NAND flash mounted on circuit boards, and are more shock resistant.




FASTER

Faster data access, boot ups, file transfers, and an overall quicker computing experience than hard drives.




QUIETER

Run nearly silent, unlike loud, whirring hard disc drives.




LIGHTER

Flash-based SSDs weigh considerably less.



COOLER

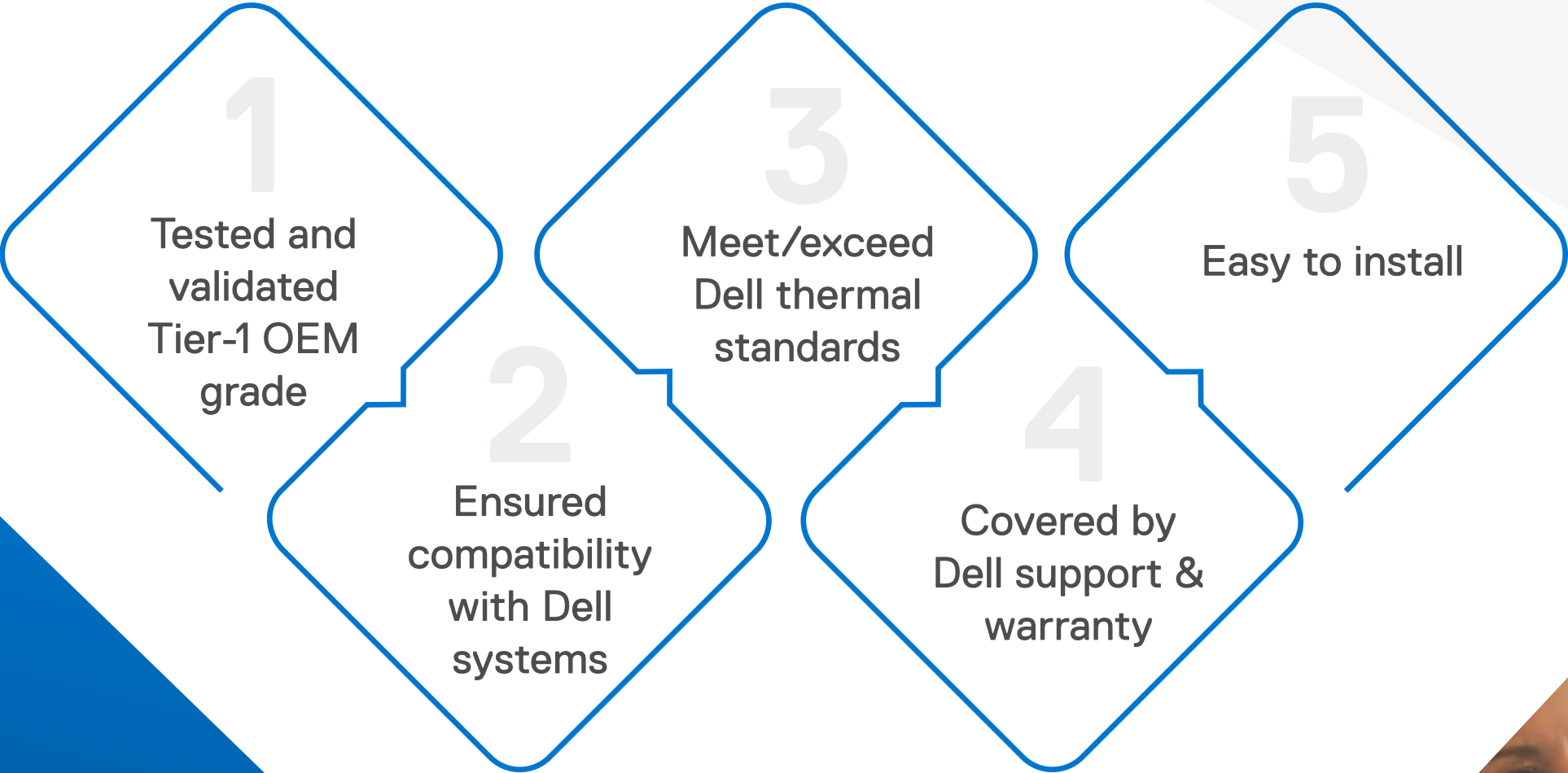
SSDs require little power to operate, resulting in less heat output by your system.



MORE EFFICIENT

Consume less power at peak load.

Value propositions:

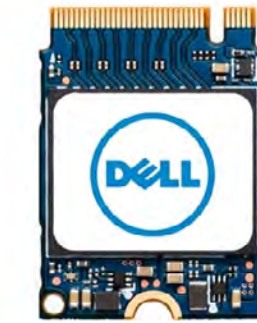


SSD Form Factors



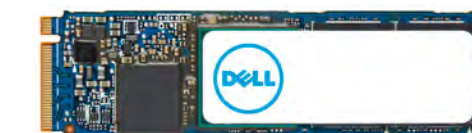
Dell 2.5" SATA Solid State Drives

[Explore More](#)



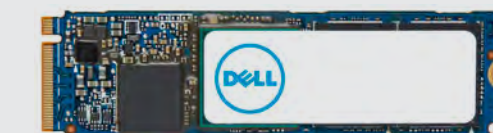
Dell M.2 PCIe NVMe 2230 Solid State Drives – up to 1TB

[Explore More](#)



Dell M.2 PCIe NVMe 2280 Solid State Drives – up to 4TB

[Explore More](#)



Dell M.2 PCIe NVMe 2280 Self Encrypting Solid State Drives – up to 1TB

[Explore More](#)



Dell USB Slim DVD±RW drive - DW316

The DVD±RW Drive from Dell™ allows you to enjoy crystal clear color, picture and sound clarity of CDs and DVDs. This drive can read/write CDs, and read DVDs effectively providing users with full optical read capability in a single device.

Features

- Plug and play, at home or on the go
- Exceptional performance
- Simple, elegant design

Explore More





MY PASSPORT FROM WD

My Passport drive is a trusted, portable storage solution that gives you the confidence and freedom to drive forward in life. With a new, stylish design that fits in the palm of your hand, there's space to store, organize, and share your photos, videos, music, and documents. Perfectly paired with backup software and password protection (Windows® only), My Passport drive helps keep all your digital life's content safe.

Slim design

Make the most of your journeys with a design that suits your lifestyle. The new My Passport has been redesigned to feature a convenient, slim form factor and is available in a range of vibrant colors.

Backed up

Make sure everything you create while on your life journey - photos, videos, music, and documents - doesn't get lost. My Passport drive comes equipped with backup software that can be set to run automatically as per your schedule. Just choose the time and frequency to back up important files from your system onto your My Passport drive (Windows® only) and have all the peace of mind you desire.

Locked down

With its built-in 256-bit AES hardware encryption featuring password protection, My Passport drive helps keep your digital life's content secure. Just activate password protection and set your own personalized password using our downloadable software (Windows® only).

Super easy

My Passport portable storage comes ready to use, right out of the box and with all the necessary cables. And with SuperSpeed USB, you can quickly start backing up everything in your life and keep driving forward.



WD 1TB My Passport External HDD

Features

- **Type:** Hard drive - external (portable)
- **Capacity:** 1 TB
- **Encryption Algorithm:** 256-bit AES
- **Interface:** USB 3.2 Gen 1
- **Features:** Password authentication, automatic backup
- **Enclosure Color:** Black
- **Dimensions (WxDxH):** 3 in x 4.2 in x 0.4 in
- **Weight:** 4.23 oz
- **Works with Chromebook:** Yes
- **Manufacturer Warranty:** 3 years

Explore More 



WD 2TB My Passport External HDD - Sky

Features

- **Type:** Hard drive - external (portable)
- **Capacity:** 2 TB
- **Encryption Algorithm:** 256-bit AES
- **Interface:** USB 1.1
- **Features:** Password protection, automatic backup
- **Enclosure Color:** Sky blue
- **Dimensions (WxDxH):** 2.9 in x 4.2 in x 0.4 in
- **Weight:** 4.23 oz
- **Manufacturer Warranty:** 3 years

Explore More 



WD 4TB My Passport External HDD - Red

Features

- **Type:** Hard drive - external (portable)
- **Capacity:** 4 TB
- **Encryption Algorithm:** 256-bit AES
- **Interface:** USB 3.2 Gen 1
- **Features:** Password protection, automatic backup
- **Enclosure Color:** Red
- **Dimensions (WxDxH):** 2.9 in x 4.2 in x 0.4 in
- **Weight:** 7.4 oz
- **Manufacturer Warranty:** 3 years

Explore More 



WD 5TB My Passport External HDD

Features

- **Type:** Hard drive - external (portable)
- **Capacity:** 5 TB
- **Encryption Algorithm:** 256-bit AES
- **Interface:** USB 3.2 Gen 1
- **Features:** Password protection, automatic backup
- **Enclosure Color:** Black
- **Dimensions (WxDxH):** 2.9 in x 0.75 in x 4.2 in
- **Weight:** 7.4 oz
- **Works with Chromebook:** Yes
- **Manufacturer Warranty:** 3 years

Explore More 



DELL FLASH DRIVES

Easily back-up or share data between devices without the need for Wi-Fi or physical cables with flash drives from Dell.

Value propositions:

Plug and play connectivity

5-year warranty

Combo flash drives with a dual interface that works with both standard USB-A and USB Type-C™ ports, compatible with nearly any device

Features

- Ideal way to provide extra storage for the latest smartphones, tablets, PCs and Mac computers, which may have limited expansion ports
- High-speed data transfer with up to 100MB/s read and 15MB/s write capabilities
- Supports Windows® 11, 10, 8.1, 8, 7(SP1), Mac 10.9.x +, Linux 2.6 + and Chrome OS
- Rotating cap to protect the reversible USB Type-C connector and protective USB-A cover

Dell 32GB USB 3.0 Type-A and Type-C Combo Flash Drive

Explore More



Dell 64GB USB 3.0 Type-A and Type-C Combo Flash Drive

Explore More



Dell 128GB USB 3.0 Type-A and Type-C Combo Flash Drive

Explore More





DELL GRAPHICS CARDS

Increased performance and productivity

Step up your game when running demanding applications – such as gaming, video editing, 3D modeling, and AI – with graphics cards that bring accelerated speed and stunning visual quality to redefine possibilities, in whatever you do. This ultra-high performance elevates your experience, powering you to chase your creative dreams – no matter if you're a creator, student, gamer, or power user.

Boost your productivity, upgrade system performance or extend system lifecycle with Dell Technologies graphics cards designed for Dell systems with industry-leading products manufactured by NVIDIA and AMD.

Graphics Cards for Professional Applications

Experience the ultimate in your professional workflows with graphics cards designed to deliver powerful performance and breathe a new life into visuals. Or simply upgrade your system, and increase productivity, with a multi-monitor set-up. Get a next-gen graphics card for an immersive experience in demanding applications across verticals, such as video editing, 3D modeling, game development and artificial intelligence - today and tomorrow.

Leveraging innovative technologies with proven hardware reliability, Dell graphics cards meet your needs for maximizing productivity, all in an easy to upgrade kit.



Dell Upgrade Kits

Dell customer kits offer the latest and greatest technology in graphics cards. Not every graphics card on the market is certified and older generation cards are not normally provided. In instances where a customer kit is not offered, Dell uses third party manufacturers as gap fill products to bring a full line-up of solutions to meet customer needs.

Why Dell branded?

- An opportunity to use the exact same components as in Dell factory-built machines
- Validated and certified to work with your Dell PC
- Dell customer kits come with a minimum 1 year warranty or take on the system warranty, whichever is longer
- Buying Dell branded graphics cards means technical support for all your queries will be just a call away

Why upgrade?

- Run the latest software (OS/games/applications)
- Improved graphics performance
- Proven hardware reliability
- Enables ultra high resolution visuals (4K/5K) in a multi-monitor set up
- Connect more than 4 newer, more advanced displays, depending on your system capabilities

NVIDIA Graphics Cards

Get the technology and features you need to conquer the most challenging workflows—from stunning industrial design to advanced special effects to complex scientific visualization.

NVIDIA RTX™ graphics cards bring the power of real-time ray tracing and AI to the applications you use every day.

What is ray tracing?

Ray tracing is a computer graphics technique that creates incredibly realistic lighting. The result is a photorealistic representation of shadows, reflections and colors as they would look in real life.

NVIDIA Quadro professional graphics cards are designed, built and engineered to accelerate any professional workflow, making it the top choice for millions of creative and technical users.

Harnessing NVIDIA's CUDA® parallel processing technology, **NVIDIA RTX™ and Quadro® GPUs** deliver up to five times faster performance and up to eight times faster computational simulation across a broad range of design, animation and video applications. The GPUs are certified on industry-leading applications to deliver optimized application performance and unmatched image quality. Plus, this certification delivers industry-leading reliability on the applications businesses rely on.

NVIDIA GeForce graphics cards are the #1 choice for no-holds-barred PC gamers who demand the best possible performance, gaming technologies, and immersive experiences.

Advantages of professional graphics over consumer graphics

NVIDIA professional graphics cards are built for years of non-stop use:

- Built for use 24 hours a day, 7 days a week
- Extended availability and support offered on all professional cards, including bug fixes for professional applications

NVIDIA RTX™ and Quadro® solutions are built for workplace environments, and are:

- Equipped with more memory, smaller footprints and consume less power
- Deployed for tens or hundreds of PCs in offices
- **Application certified:** Hardware and drivers are tested to work reliably on certified professional software applications.
- Managed during end-of-life transitions. You'll have guaranteed support on product ranges, even as they're retired.

NVIDIA RTX™ and Quadro® provide support tools for remote administration and deployment as well as professional features such as:

- **NVIDIA® RTX Desktop Manager** for desktop management, allowing users to create grids and snap applications to them, organizing their workspace across multiple displays and application windows.
- **NVIDIA Mosaic** for easily spanning any application across up to 16 high-resolution panels or projectors from a single system, conveniently treating the multiple displays as a single desktop, without application software changes or visual artifacts.
- Advanced 3D stereo for supporting stereoscopic 3D on HDMI 3D TVs, projectors and displays. It allows users to view images and ultrasounds in 3D.
- **NVIDIA Sync** for supporting display arrays up to 32 displays and synching to external video sources in video production.
- **NVIDIA Broadcast** for transforming your conference calls and video with AI, allowing for image enhancement, and ambient noise reduction within common conferencing applications like Zoom and Microsoft Teams.

Why not use a consumer GPU?

Consumer graphics may seem like a good way to reduce IT budgets but for professional use they actually result in a much higher Total Cost of Ownership (TCO). This is because there are several differences between consumer and commercial graphics cards. In general, commercial Graphics Processing Units (GPUs) have more computational power, more memory for complex workflows, and are designed to run for days at a time without overheating.

Here are some other key differences:

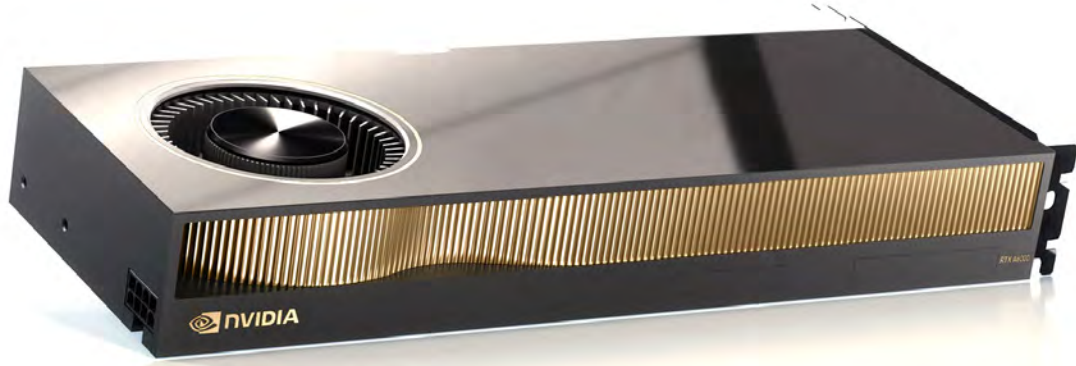
- ✓ **Firmware:**
Workstation GPUs have firmware optimized for sustained performance, accuracy and long-term stability. In contrast, consumer cards are designed for bursts of high performance over a relatively short time.
- ✓ **Build quality:**
Workstation cards are built to exact specifications to ensure reliable performance. Consumer cards are built by third parties using an Original Design Manufacturer (ODM) reference and have variations within the same brand of card.
- ✓ **Lifecycle management:**
Consumer cards don't offer transition periods once they stop being supported. They just need to be replaced by newer models. Workstation GPUs have longer and more predictable support periods, which allow a smoother transition to newer hardware.
- ✓ **Drivers:**
Workstation drivers are certified and optimized for operations like 3D modelling, CAD/CAM work and complex simulations. Drivers for consumer cards are typically designed to run the latest games smoothly and do not go through the kind of certification and optimization needed for professional applications.
- ✓ **Memory:**
Workstation GPUs typically have ECC memory. It's a type of memory that can detect and correct bit errors, resulting in better system stability and performance. Consumer cards don't have this and, as a result are more susceptible to security vulnerabilities, crashes and corrupted or lost data. Additionally, workstation GPUs typically have larger amounts of memory, which enable the kind of multi-application usage commonly leveraged in these workflows.
- ✓ **ISV testing:**
Workstation cards within the ISV program are tested to work reliably on certified professional software applications. Additionally, if a problem does arise, they come with a commitment from Dell Technologies and NVIDIA to resolve them quickly and efficiently.

NVIDIA RTX A6000

Powering the world’s highest-performing workstations

The NVIDIA RTX™ A6000 with 48GB memory, built on the NVIDIA Ampere architecture, delivers everything designers, engineers, scientists, and artists need to meet the most graphics and compute-intensive workflows. The RTX A6000 is equipped with the latest generation RT Cores, Tensor Cores, and CUDA® cores for unprecedented rendering, AI, graphics, and compute performance.

Explore More ➔

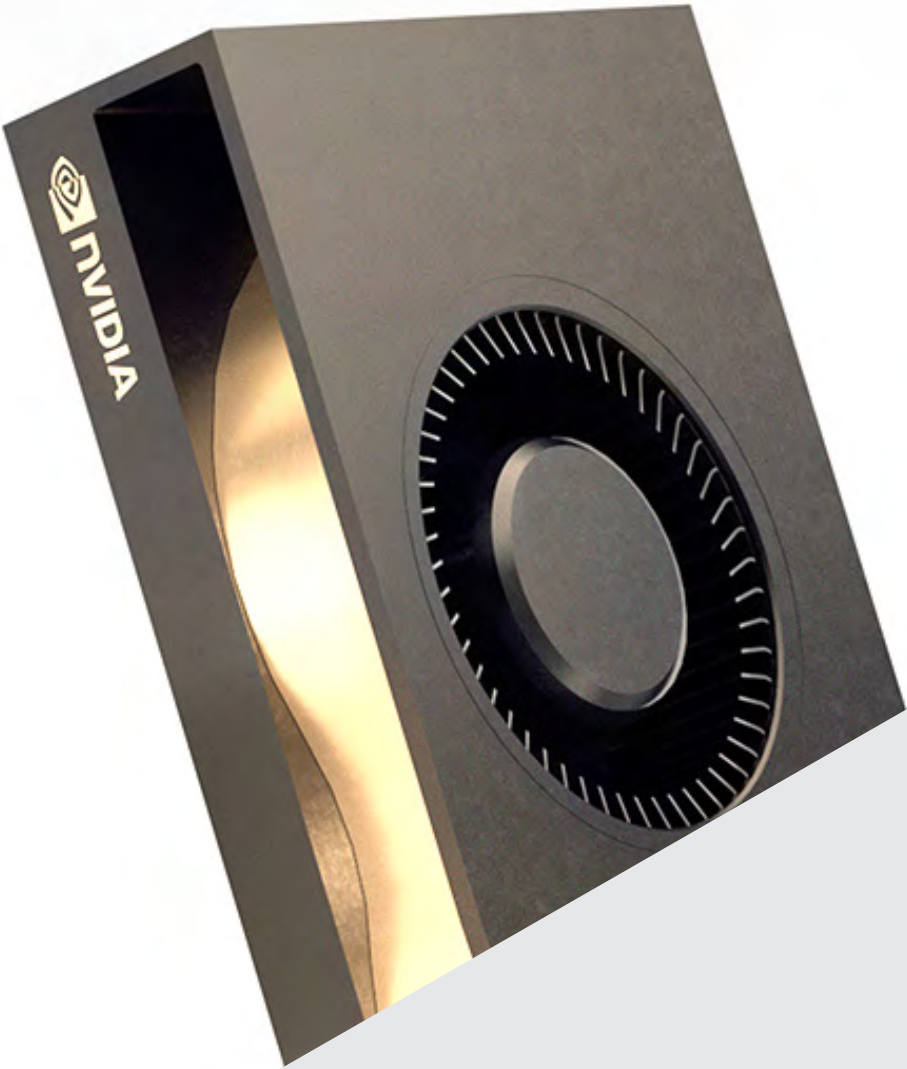


NVIDIA RTX A5000

Perfectly balanced. Blazing performance.

The NVIDIA RTX™ A5000 delivers the power, performance, capabilities, and reliability professionals need to bring their boldest ideas to life. Built on the NVIDIA Ampere architecture, the RTX A5000 combines 64 second-generation RT Cores, 256 third-generation Tensor Cores, and 8,192 CUDA® cores with 24 GB of graphics memory to supercharge rendering, AI, graphics, and compute tasks.

Explore More ➔



NVIDIA RTX A4000

Sleek design. Powerful performance.

The NVIDIA RTX™ A4000 is the most powerful single-slot GPU for professionals, delivering real-time ray tracing, AI-accelerated compute, and high-performance graphics to your desktop. Built on the NVIDIA Ampere architecture, the RTX A4000 combines 48 second-generation RT Cores, 192 third-generation Tensor Cores, and 6,144 CUDA® cores with 16 GB of graphics memory with error-correction code (ECC) so you can innovate with uncompromised computing accuracy and reliability.

Explore More ➔



NVIDIA T1000

Full-size features. Compact design.

The NVIDIA® T1000, built on the NVIDIA Turing™ GPU architecture, is a powerful, low profile solution that delivers the full-size features, performance and capabilities required by demanding professional applications in a compact graphics card. Featuring 896 CUDA cores and 4GB of GDDR6 memory, the T1000 enables professionals to tackle multi-app workflows, from 3D modeling to video editing. Support for up to four 5K displays gives you the expansive visual workspace to view your work in stunning detail.

Explore More ➔





NVIDIA T600

Full-size features. Compact design.

The NVIDIA® T600, built on the NVIDIA Turing™ GPU architecture, delivers amazing performance and capabilities for a range of professional workflows. Featuring 640 CUDA cores and 4GB of GDDR6 memory, the T600 enables professionals to tackle multi-app workflows, from 2D and 3D modeling to HD video editing. Support for up to four 5K displays gives you the expansive visual workspace to view your work in stunning detail.

[Explore More](#) →

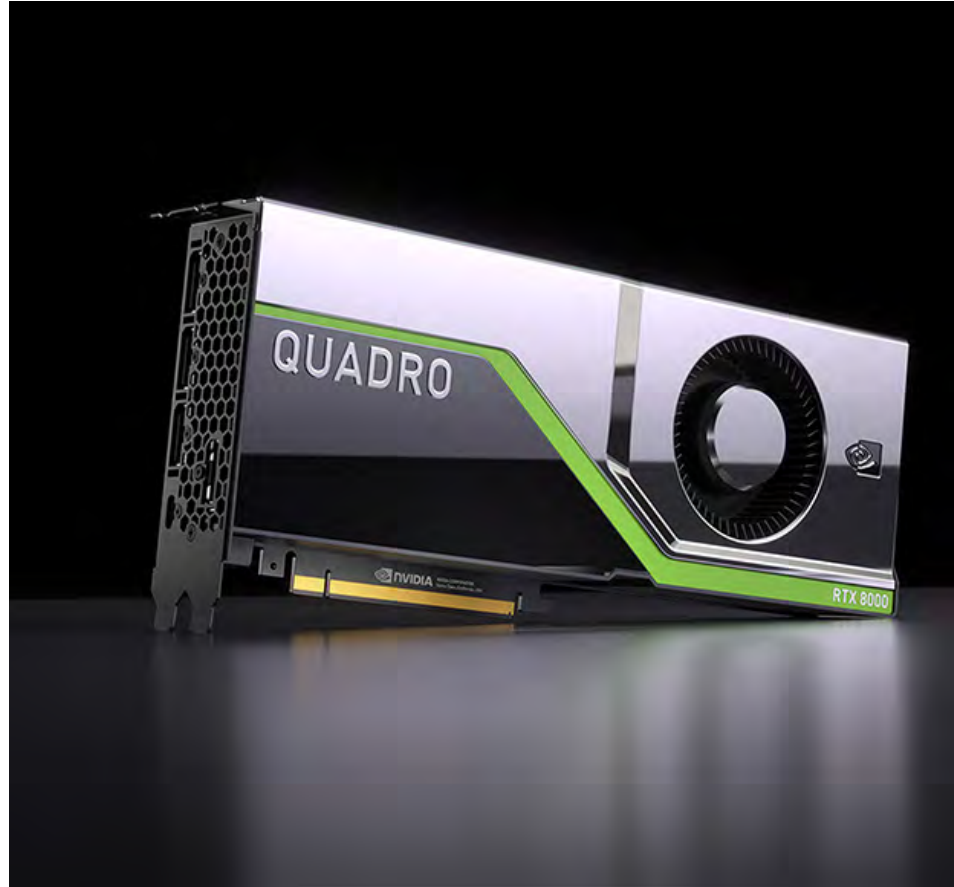
NVIDIA T400 2GB

Power and performance in a small form factor

The NVIDIA® T400, built on the NVIDIA Turing™ GPU architecture, delivers amazing performance and capabilities to power a range of professional workflows. Featuring 384 CUDA cores and 2GB of GDDR6 memory, the T400 packs power and performance in a small form factor so professionals can tackle a range of multi-app workflows with ease. Native support for up to three 5K displays gives you the expansive visual workspace to view your work in stunning detail.

[Explore More](#) →





NVIDIA Quadro RTX 8000

The world's first ray tracing GPU

Experience unbeatable performance, power, and memory with the NVIDIA® Quadro RTX™ 8000, the world's most powerful graphics card for professional workflows. The Quadro RTX 8000 is powered by the NVIDIA Turing™ architecture and NVIDIA RTX™ platform to deliver the latest hardware-accelerated ray tracing, deep learning, and advanced shading to professionals. Equipped with 4608 NVIDIA CUDA® cores, 576 Tensor cores, and 72 RT Cores, the Quadro RTX 8000 can render complex models and scenes with physically accurate shadows, reflections, and refractions to empower users with instant insight.

Explore More →

NVIDIA Quadro RTX 5000

The world's first ray tracing GPU

Shatter the boundaries of what's possible with the NVIDIA® Quadro RTX™ 5000, powered by NVIDIA Turing GPU to bring real-time ray tracing and accelerated AI to next-generation workflows. Creative and technical professionals can supercharge demanding design and visualization workloads and make more informed decisions faster than ever before.

Explore More →



NVIDIA Quadro RTX 6000

Real time ray tracing for professionals

NVIDIA® Quadro RTX™ 6000, powered by the NVIDIA Turing™ architecture and the NVIDIA RTX™ platform, brings the most significant advancement in computer graphics in over a decade to professional workflows. Designers and artists can now wield the power of hardware-accelerated ray tracing, deep learning, and advanced shading to dramatically boost productivity and create amazing content faster than ever before. Equipped with 4608 CUDA cores, 576 Tensor cores, 72 RT Cores and massive 24GB GDDR6 memory, Quadro RTX 6000 can render complex models and scenes with physically accurate shadows, reflections, and refractions to empower users with instant insight.

Explore More ➔



NVIDIA Quadro RTX 4000

Real time means real change

Meet the challenge of today’s demanding professional workflows with NVIDIA® Quadro RTX™ 4000, powered by NVIDIA Turing™ architecture and the NVIDIA RTX™ platform. The NVIDIA Quadro RTX 4000 delivers GPU accelerated ray tracing, deep learning, and advanced shading in an accessible single slot form factor. It gives designers the power to accelerate their creative efforts with faster time to insight and faster time to solution.

Explore More ➔



NVIDIA Quadro GV100

Power to accelerate AI-enhanced workflows

From stunning industrial design to advanced special effects to complex scientific visualization, and the frontiers of AI and Deep Learning, Quadro is the world's preeminent visual computing platform. Only Quadro has the most advanced ecosystem of hardware, software and tools to transform the disruptive challenges of today into the business successes of tomorrow – and the new Quadro GV100 exemplifies this trend.

Explore More 



AMD Graphics Cards

Explore Radeon™ Pro graphics for workstations and unleash your creativity. Get the workstation GPU that's right for you!



More Pixels. More Polygons.

AMD Radeon™ PRO GPUs provide a number of unique technologies for modern workflow strains, including:

- ✓ **AMD Eyefinity multi-display technology** that empowers you to have multiple applications and projects across three, four or even six high-resolution monitors all from a single GPU. With multiple screens, games become more immersive, workstations become more useful and you become more productive.
- ✓ **AMD Radeon PRO Viewport Boost** that allows for several 3D workflows to have an improved viewport performance simply by enabling the feature in the Enterprise driver.

Something for everyone

Today's modern workstation user requires performance, stability, image quality and software certifications for increased productivity. Users across all industries are expected to use more graphically intense applications than ever before, powered by a reliable system that is always ready to go. The entire AMD Radeon™ PRO graphics family of GPUs answers these needs, and goes further by bringing system power efficiencies, thermal efficiencies, and multitasking performance fully backed by robust software drivers. AMD professional GPUs are designed for those who need performance, durability, and high-quality components for increased reliability all while staying within realistic budgets.

AMD DESKTOP WORKSTATION



AMD Radeon™ PRO W6800 Graphics

Discover your software’s full potential

Explore More →



AMD Radeon™ PRO W6600 Graphics

Meticulously engineered for high performance

Explore More →



AMD Radeon™ PRO W5500 Graphics

The new design & engineering GPU of choice

Explore More →



AMD Radeon™ PRO WX 3200 Graphics

Cost-effective entry level ISV-certified graphics

Explore More →



AMD Radeon™ PRO W5700 Graphics

Peak productivity for creative professionals

Explore More →



AMD Radeon Pro SSG

Power to the innovators

Explore More →

Graphics Cards

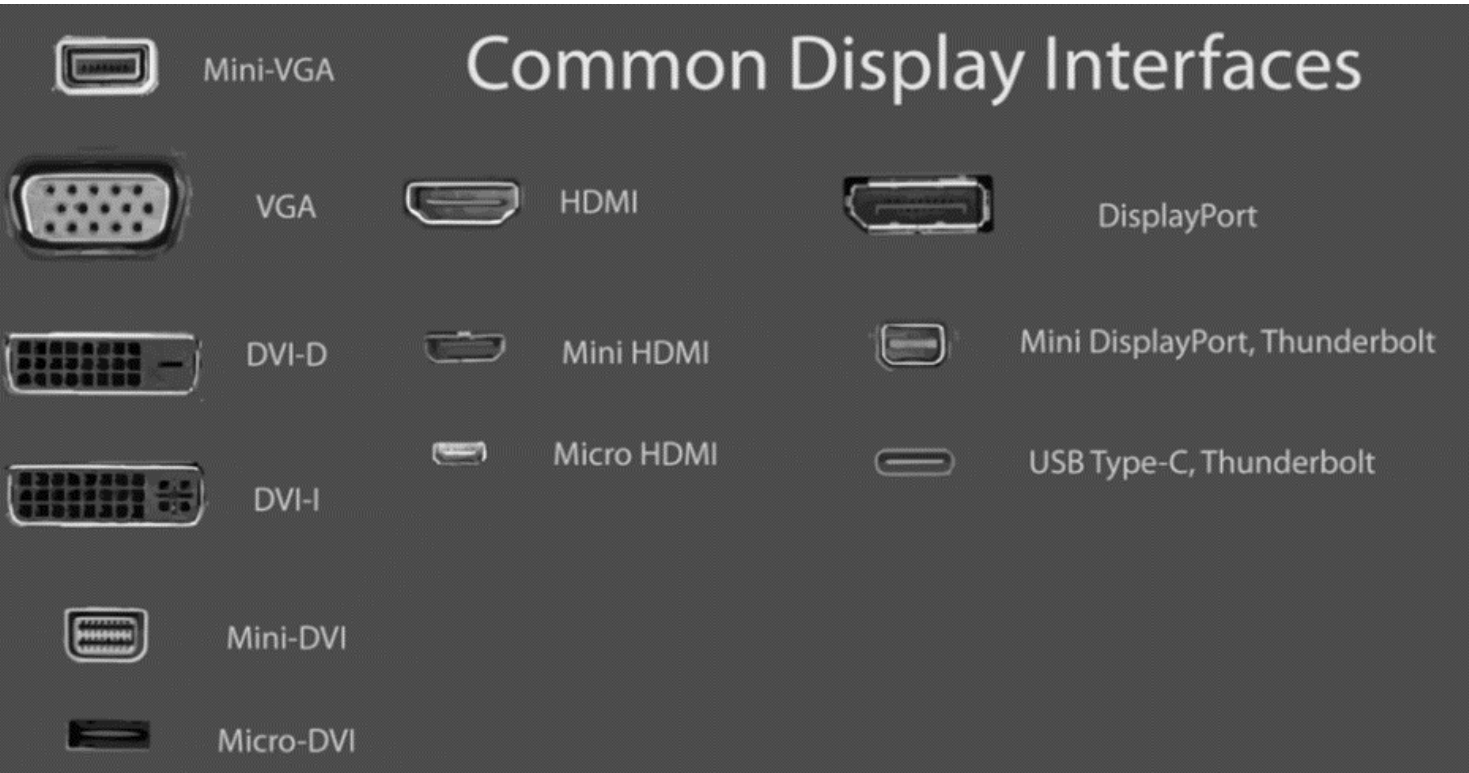
A wide range of commercial (Quadro/Radeon Pro) graphics cards are available as Dell Customer Kits. We also offer gap-fill products from our partners PNY and VisionTek.



Video Interfaces

Graphics cards and monitors utilize multiple interfaces effecting resolution, refresh rate, total display connectivity and performance.

If the graphics card does not have the same connection as the monitor, you will need to purchase an adapter.

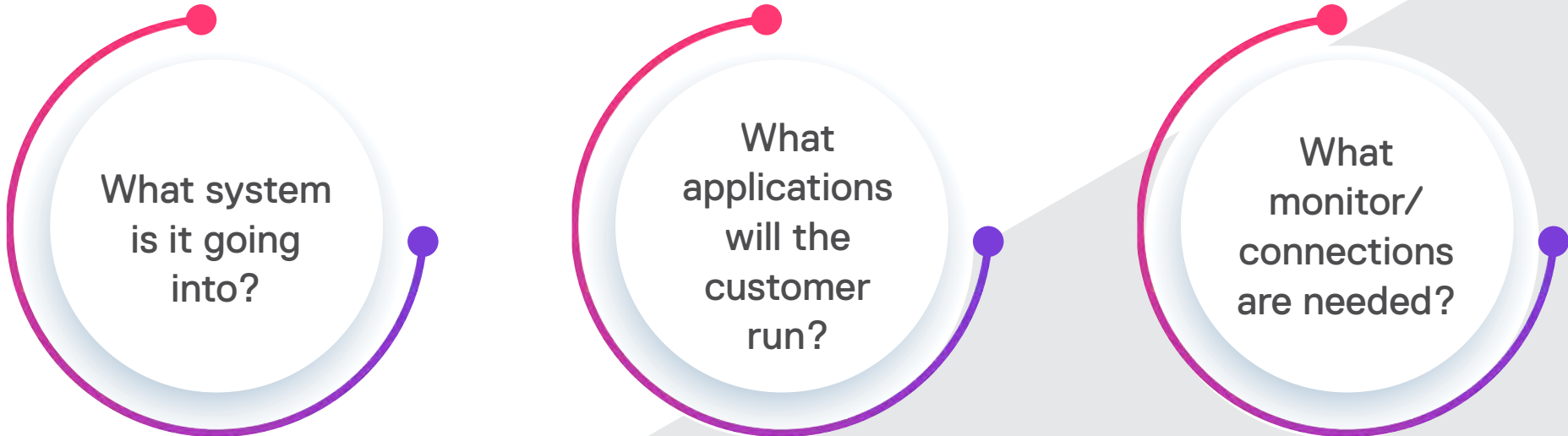


Dell Commercial Graphics Cards

Consumer graphics cards that are installed in commercial systems are not supported by NVIDIA, AMD, Dell Technical Support, Drivers or Software.



3 questions to keep in mind while looking for the right Graphics Cards:



PLEASE NOTE:

- Desktop graphics cards have fans. Server/enterprise graphics cards are passively cooled.
- 3rd party graphics cards come with full height and low profile (if available) brackets. Dell graphics cards only come with the bracket indicated in the description (FH = Full Height, LP = Low Profile).
- Dell does not sku up the brackets for individual sale. The brackets are only available when purchased with a graphics card. If the incorrect profile card was ordered, you may return the card and purchase the correct profile.
- For graphics cards that have a low profile, we offer a low profile version and a full height version. Each version will be labeled as Low Profile (LP) or Full Height (FH) in the description.
- Find out which graphics cards are compatible with your system with the Video Card Selector, [HERE!](#)

Premier Solutions

Modernize your Parts & Upgrades purchasing.

Save time and money by shopping our catalog on a tailored site that simplifies purchasing and gives you greater control over the entire procurement ecosystem. All complimentary. all backed by your Dell Technologies Account Team.

Advantages of utilizing Premier Solutions



SIMPLIFY PURCHASING

Cut costs, user errors, and delivery times with a single customizable site.



LEVERAGE REPORTING

Gain more control with built-in management and reporting features.



RELY ON US

Let our team of experts help you reshape and revolutionize your procurement process.

FIND THE RIGHT SOLUTION TO SIMPLIFY PROCUREMENT

DellTechnologies.com/Premier

Contact your Sales Representative to get started today.



Transform workspace productivity with unmatched solutions

Dell Parts & Upgrades Flipbook

To find out how Dell can help transform your business,
contact your Dell Account Executive.