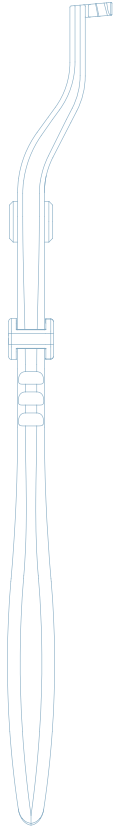
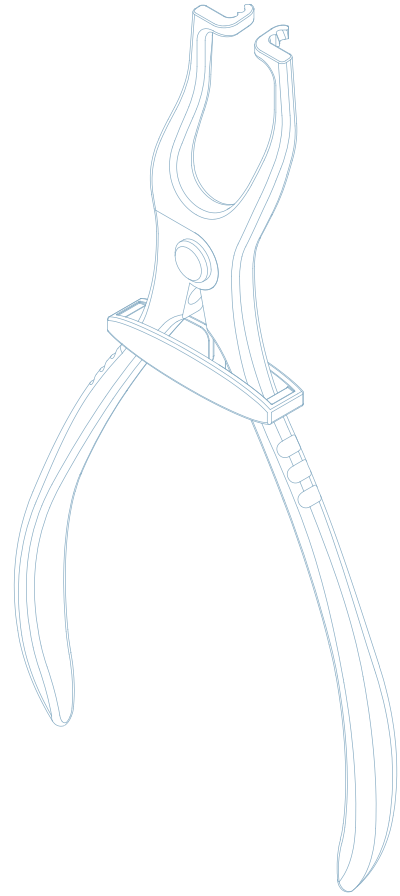
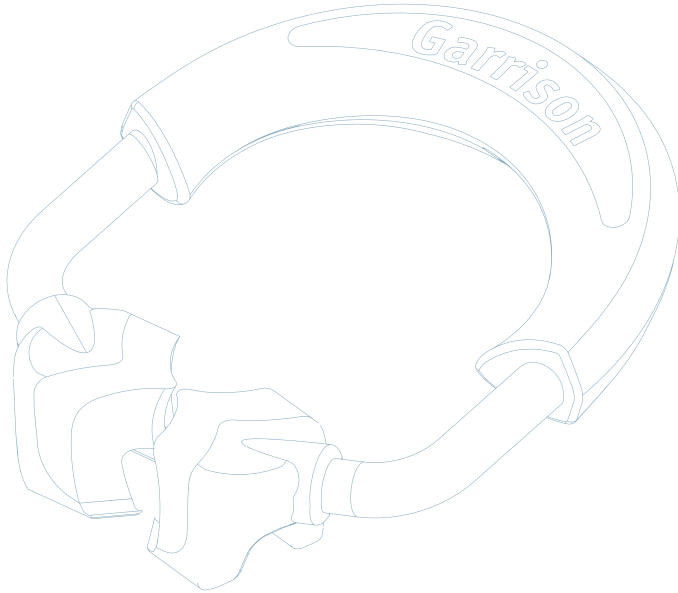
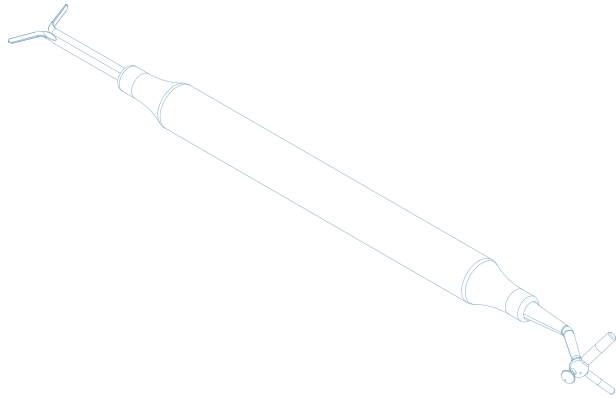
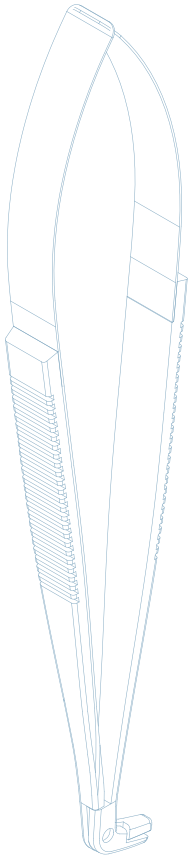


# Garrison



Product Catalogue  
2024



## MATRIX SYSTEMS

Strata-G™ . . . . . 4-5

Deep Margin Elevation . . . . . 24-25 & 27

Reel Matrix™ . . . . . 26-27

Slick Bands™ Tofflemire-style Matrices . . . . . 28-29

Fusion™ Anterior . . . . . 32-33

VariStrip™ Anterior . . . . . 31

Blue View™ Cervical Matrices . . . . . 37

## RINGS

Strata-G™ . . . . . 6

3D Fusion™, 3DXR, 3D500, Gold, Original . . . . . 7

## BANDS

Strata-G™ . . . . . 9

Firm, Fusion, SXR . . . . . 10

SM, Gold, M, B . . . . . 11

## WEDGES

Strata-G™ . . . . . 12

Fusion, A+, G-Wedge™, WedgeWands™ . . . . . 13

## PRE-WEDGE SHIELD

FenderWedge® . . . . . 15

## INTERPROXIMAL FINISHERS

FitStrip™ . . . . . 16-19

## POLISHING SYSTEMS

Rally™ . . . . . 20-21

eZr™ . . . . . 22-23

## MATRIX BAND FORCEPS

Composi-Tight® Matrix . . . . . 36

## RING PLACEMENT FORCEPS

Premier . . . . . 37

Original . . . . . 37

Universal . . . . . 37

## CONTACT FORMERS

Perform™ . . . . . 35

## COMPOSITE INSTRUMENT

Multi-Function Non-Stick . . . . . 38

Standard Non-Stick . . . . . 38

## INFORMATION PAGES

Strata-G™ . . . . . 2-4

Cases . . . . . 3, 8, 15, 16, 24, 25, 30, 32

CE Information . . . . . 14

Matrix Selection Guide . . . . . 40-41

Order Form . . . . . 42

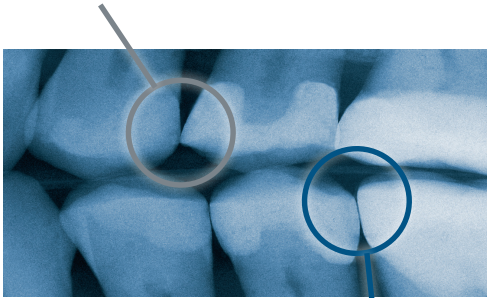
Ordering Information . . . . . 43

Guarantee . . . . . back cover

# Garrison® sectional matrix systems are the standard of care.

## Tofflemire-style System

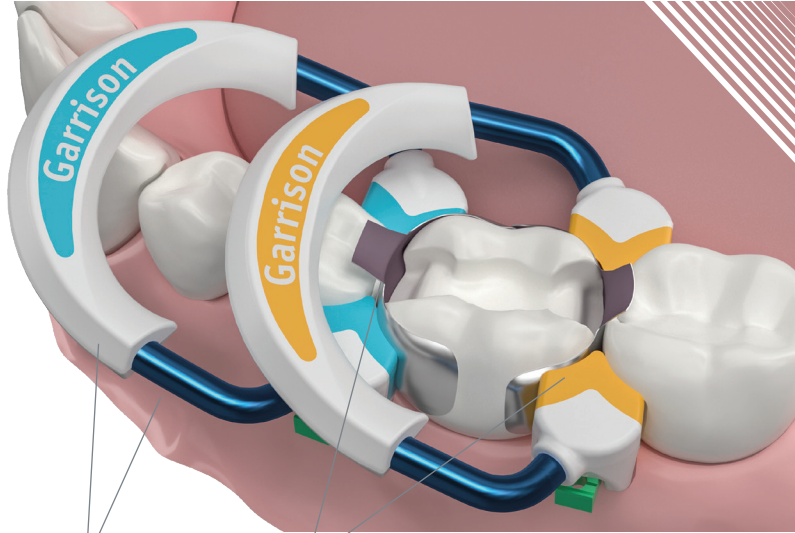
- Fails to restore proximal anatomy
- Thin contact at the marginal ridge
- Large food trap (below)
- Increased likelihood of fracture, occlusal interference, recurrent caries and periodontal disease



## Strata-G™ Sectional Matrix System

- + Operator-friendly retaining system
- + Naturally contoured bands
- + Anatomically correct contacts
- + Contacts at the height of contour
- + Rings produce optimal tooth separation for excellent, tight contacts

## Now faster and more predictable!



### Reliable, tight contacts

Drawn-wire nickel titanium plus PEEK produces consistent separating pressure longer!

### Easier, more predictable contours

Marginal ridge enhancements built into the matrix bands AND rings help provide that finishing flair!

### Faster, less frustrating Class IIs

The Strata-G™ rings, bands and wedges combine for a 270° Seal™ for ultimate flash control. The rings won't spring off the tooth, and the amazing Wide Preparation ring makes tough wide preps no problem.

Garrison® sectional matrix systems are the standard of care.

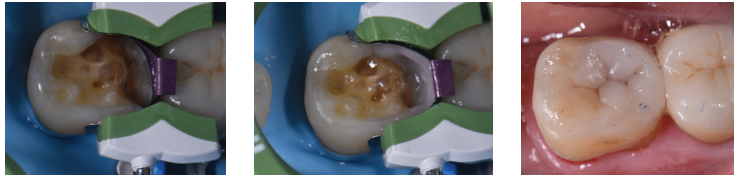
# Garrison® Sectional Matrix Cases

Great adaptation to the teeth eliminates the need for adjustment with polishers in the proximal areas.



Images courtesy of Dr. Javid Muraslov, Latvia

Wide preps can be handled in one simple step when you have the right (green) ring.



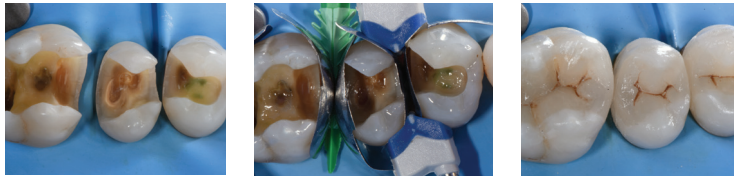
Images courtesy of Dr. Clarence Tam, HBSc, DDS, FIADFE, AAACD, Auckland, New Zealand

Back-to-back requires a shift in technique—we can show you how.\*



Images courtesy of Dr. Anand Narvekar, Mumbai, India

Quadrants can be a challenge. Ease your concerns with tips and tricks from the pros.



Images courtesy of Prof. Nicola Scotti, DDS, PhD Torino, Italy

\*To see full writeups, cases and reviews go to [www.garrisondental.com/learning](http://www.garrisondental.com/learning)  
Do you have a case you want to share? Email it to us at [contact@garrisondental.com](mailto:contact@garrisondental.com).

## The Award Winning Sectional Matrix System



### TESTIMONIALS

**David Naegele, DMD**  
(The Strata-G™ ring)  
created a much better seal on the prep for moisture control, and minimal, if any, flash. Strata-G™ bands produced clear marginal ridges as I've never seen before. Finishing time for the restoration is GREATLY reduced.

**Nick Romenesko, DDS**  
The rubber feet of the (Strata-G™) rings help reduce the box and my marginal ridge roll is excellent. Since receiving Strata-G™ it is the only system I use... I would cry if someone took it away.

#### Steven Berwitz, DMD

I have used various sectional matrix systems from Garrison®, and I like this one the best. There is a significant reduction in flash and the contours of the restorations are ideal. The contacts made by this system are great!

# STRATA-G™

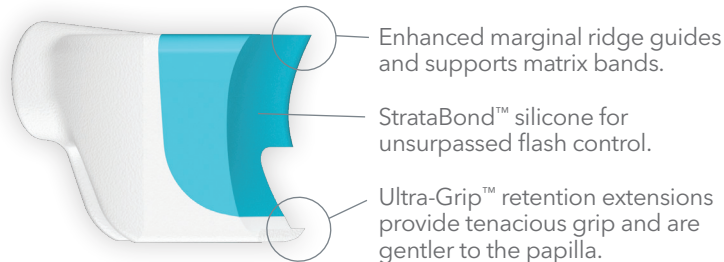
## Strong tooth separation yet easier to open!

Nitinol drawn-wire nickel titanium is aligned at the molecular level for superior performance yet requires less effort to open. Garrison's proprietary StrataSet™ treatment maximizes the longevity of this advanced material.

## More uses!

The PEEK ultra-durable reinforcement on the back of the ring allows Strata-G™ to retain a higher percentage of initial strength for much longer than non-reinforced rings. Proprietary StrataBond™ silicone/PEEK tips withstand hundreds of applications.

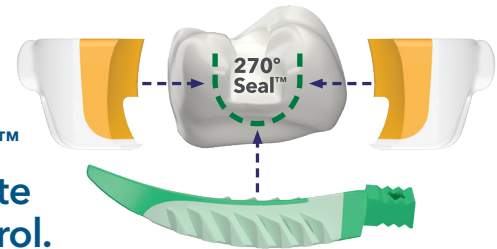
## Improved anatomy—Unbeatable grip



## Wider indications—wider smiles!

Conserve more of your patient's natural tooth structure with dentistry's premier Wide Preparation ring. The Strata-G™ Wide Preparation ring (green) provides a more conservative alternative for severely broken-down teeth.

Strata-G™ forms a 270° Seal™ for ultimate flash control.



# STRATA-G™

faster—more predictable—flash control



**SGR-KSH-11 kit contains:**

- 1 Universal/Short Ring (blue)
- 1 Tall Ring (orange)
- 1 Wide Prep Ring (green)
- 50 Assorted Matrix Bands
- 50 Firm Matrix Bands
- 10 VariStrips™
- 80 Assorted Ultra-Adaptive Wedges
- 12 Assorted Rally™ Polishers (pg 20-21)
- 1 Ring Placement Forceps (pg 37)
- 1 BFA-1 Band Placement Forceps (pg 36)
- 1 TN009 Multi-Function Instrument (pg 38)

**Item**

- SGR-KSH-11
- SGR-KSH-10 (BFA-1 and TN009 not in kit)
- SGR-KSH-14 (TN009 not in kit)

**For refill information on Strata-G™ rings, bands, and wedges, refer to pages 6, 9 and 12.**

*For more kit configurations and systems, go to [garrisondental.com](http://garrisondental.com)*

toll free 888.437.0032 | [www.garrisondental.com](http://www.garrisondental.com)

# STRATA-G™

## Longer lasting by design.

Advanced materials and design combine to produce our longest lasting, most predictable separator ring ever!



### All-New Separator Rings.

- The Strata-G™ Universal/Short ring (blue) can easily grip the distal of the canine, short or malpositioned teeth and even primary teeth. The Universal ring can help you restore the widest range of cases in dentistry.
- The Strata-G™ Tall ring (orange) provides ideal matrix band adaptation and separation on taller teeth. Additionally, it is perfect for stacking over the Universal ring (blue) for MODs or multiple tooth restorations.






## Dentistry's Premier Wide Preparation Ring.

- The Strata-G™ Wide Preparation ring (green) allows you to conserve more of your patient's natural tooth structure. It provides a more conservative alternative than typical indirect restorations for severely broken-down teeth. Treat these cases as an extra-wide Class II rather than a complete crown prep with the confidence of knowing that you will achieve excellent contact and contour.

## STRATA-G™




Smaller, easier to open and lasts longer

Smaller, easier to open and lasts longer		
		
SG400 Universal/Short Ring 2/pk	SG500 Tall Ring 2/pk	SG600 Wide Prep Ring 2/pk



## Composi-Tight® 3D Fusion™

Soft-Face™ silicone tips

		
FX400 Short Ring 2/pk	FX500 Tall Ring 2/pk	FX600 Wide Prep Ring 2/pk


## Composi-Tight® 3D XR

The tenacious grip, along with enhanced Soft-Face™ technology and Dynamic Tip Angle™


3DXR Soft-Face™ Extra Retention Rings 2/pk



## Composi-Tight® 3D

The Soft-Face™ 3D Ring provides maximum adaptation to the tooth


3D500 Soft-Face™ Rings 2/pk



## Composi-TightGold®

2x stronger than our Original G-Rings™

	
AU400 Standard Length Tines 3/pk	AU500 Long Length Tines 3/pk

## Composi-Tight®

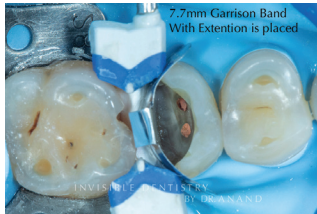
The original G-Ring™ that started it all—made of polished stainless-steel

	
G100 Standard Length Tines 3/pk	G200 Long Length Tines 3/pk



## Case using Firm Matrix Bands

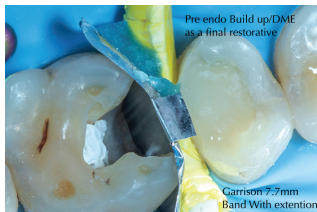
Dr. Anand Narvekar (Mumbai, India) utilized Garrison® Firm Bands for deep margin elevation in this challenging onlay case.



**Figure 1.** FXH300 large molar band with extension was placed. The wedge was wrapped with multiple layers of teflon tape to sufficiently increase its size to allow it to seal the cervical portion of the matrix band in this extremely wide interproximal space.



**Figure 2.** Cervical area was built up with multiple layers of composite.



**Figure 3.** The process was repeated for the adjacent molar. The stiff nature of Firm Bands allows apical pressure to be applied to the band without deformation of the matrix. It can be seated deeper than dead soft matrices for these types of procedures.

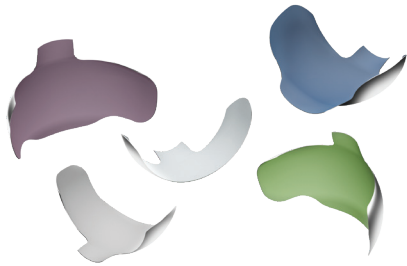


**Figure 4.** One-week post-bonding of onlays.

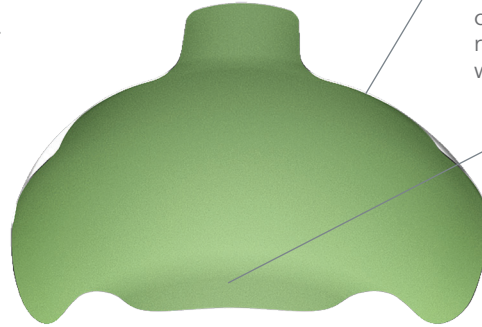
# STRATA-G™

## Anatomy top to bottom

Five sizes of super-thin stainless steel in both dead-soft and firm ensure you have the best matrix band to restore every case.



- Non-stick and color coded
- Easy placement tabs



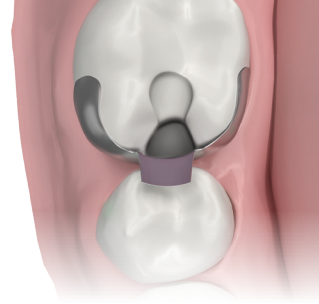
- Dead-soft and only 0.0016" thin
- NEW pedodontic size!

### Optimized marginal ridge

Strata-G™ Bands provide shape and guidance for developing the marginal ridge of Class II restorations without blocking your access.

### ProfileBooster™ subgingival apron

Achieving a natural emergence profile in challenging cervical areas is easy with Strata-G™ Bands—it's built right in!



## Strata-G™ Matrix Bands

Description	Item	Qty.
Assorted Band Kit: 5 sizes	SGB01	400
Assorted Band Kit: 5 sizes	SGB02	200






Item	Standard (-M)	Bulk
	Qty.	Qty.
SG050	50	100
SG100	50	100
SG175	50	100
SG200	50	100
SG300	50	100

SG Series

	Pediatric	Premolars	Premolars and small molars	Molars	Molars with deep cervical preps
Strata-G™ matrix bands with optimized marginal ridge					
thickness 0.0016"	Strata-G™ matrix bands with optimized marginal ridge				
height	SG050 3.5 mm	SG100 4.5 mm	SG175 5.5 mm	SG200 6.5 mm	SG300 7.5 mm





# Band Comparison Chart

FXH Series

	Pediatric	Premolars	Premolars with deep cervical preps	Premolars and small molars	Molars	Molars with deep cervical preps
Composi-Tight® 3D Fusion™ Firm	Composi-Tight® 3D Fusion™ Firm matrix bands with eZ-Place™ technology for easier placement.					
thickness 0.0015"						
height	NA	FXH100 4.3 mm	FXH150 4.3 mm w/ext 5.9 mm	FXH175 5.3 mm	FXH200 6.1 mm	FXH300 6.1 mm w/ext 7.7 mm

Item	Standard (-M) Qty.	Bulk Qty.
FXH100	50	100
FXH150	50	100
FXH175	50	100
FXH200	50	100
FXH300	50	100

FX Series

	Pediatric	Premolars	Premolars with deep cervical preps	Premolars and small molars	Molars	Molars with deep cervical preps
Composi-Tight® 3D Fusion™	Composi-Tight® 3D Fusion™ Full Curve Bands have non-stick coating and an occlusal placement tab.					
thickness 0.0016"						
height	NA	FX100 4.0 mm w/ext 4.4 mm	FX150 4.1 mm w/ext 6.0 mm	FX175 5.0 mm w/ext 5.6 mm	FX200 5.4 mm w/ext 6.6 mm	FX300 6.0 mm w/ext 8.7 mm

Item	Standard (-M) Qty.	Bulk Qty.
FX100	50	100
FX150	30	60
FX175	50	100
FX200	50	100
FX300	30	60

SXR Series

	Pediatric	Premolars	Premolars with deep cervical preps	Premolars and small molars	Molars	Molars with deep cervical preps
Slick Bands™ XR	Slick Bands™ XR Matrices have non-stick coating and Grab-Tabs™ for easier placement.					
thickness 0.0016"						
height	NA	SXR100 4.6 mm	SXR150 3.8 mm w/ext 5.4 mm	SXR175 5.4 mm	SXR200 6.4 mm	SXR300 6.4 mm w/ext 8.6 mm

Item	Standard (-M) Qty.	Bulk Qty.
SXR100	50	100
SXR150	30	60
SXR175	50	100
SXR200	50	100
SXR300	30	60

To order standard packs, add a -M after the item #.

# Band Comparison Chart

SM Series

	Pediatric	Premolars	Premolars with deep cervical preps	Premolars and small molars	Molars	Molars with deep cervical preps
<b>Slick Bands™</b> Slick Bands™ Matrices have non-stick coating.						
thickness 0.0016"						
height	SM050 3.2 mm w/ext 4.2 mm	SM100 4.6 mm	SM150 3.8 mm w/ext 5.4 mm	SM175 5.5 mm	SM200 6.4 mm	SM300 6.4 mm w/ext 8.6 mm

Item	Standard (-M)	Bulk
	Qty.	Qty.
SM050	NA	60
SM100	50	100
SM150	30	60
SM175	50	100
SM200	50	100
SM300	30	60

AU Series

	Pediatric	Premolars	Premolars with deep cervical preps	Premolars and small molars	Molars	Molars with deep cervical preps
<b>Composi-Tight Gold®</b> The Gold bands are the same as the Composi-Tight® bands.						
thickness 0.0015"				NA		
height	AU050 3.2 mm w/ext 4.2 mm	AU100 4.6 mm	AU150 3.8 mm w/ext 5.4 mm	NA	AU200 6.4 mm	AU300 6.4 mm w/ext 8.6 mm

Item	Standard (-M)	Bulk
	Qty.	Qty.
AU050	25	50
AU100	50	100
AU150	25	50
AU200	50	100
AU300	25	50

M Series

	Pediatric	Premolars	Premolars with deep cervical preps	Premolars and small molars	Molars	Molars with deep cervical preps
<b>Composi-Tight®</b> Composi-Tight® bands are contoured in 3 dimensions to provide an accurate contact at the tooth's natural height of contour.						
thickness 0.0015"						
height	M050 3.2 mm w/ext 4.2 mm	M100 4.6 mm	M150 3.8 mm w/ext 5.4 mm	M175 5.5 mm	M200 6.4 mm	M300 6.4 mm w/ext 8.6 mm

Item	Standard (-M)	Bulk
	Qty.	Qty.
M050	25	50
M100	50	100
M150	25	50
M175	50	100
M200	50	100
M300	25	50

B Series

	Pediatric	Premolars	Premolars with deep cervical preps	Premolars and small molars	Molars	Molars with deep cervical preps
<b>Composi-Tight® Original</b> The original bands have a slightly shorter length.						
thickness 0.0015"				NA		
height	B050 3.2 mm w/ext 4.2 mm	B100 4.6 mm	B150 3.8 mm w/ext 5.4 mm	NA	B200 6.4 mm	B300 6.4 mm w/ext 8.6 mm

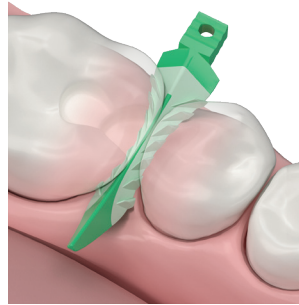
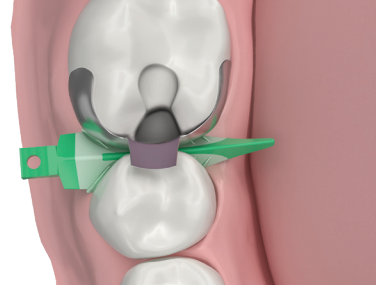
Item	Standard (-M)	Bulk
	Qty.	Qty.
B050	25	50
B100	50	100
B150	25	50
B200	50	100
B300	25	50

To order standard packs, add a -M after the item #.

# STRATA-G™

## Flexibility for a better cervical seal!

Strata-G™ Wedges utilize Soft-Face™ materials and advanced design to promote a better fit.



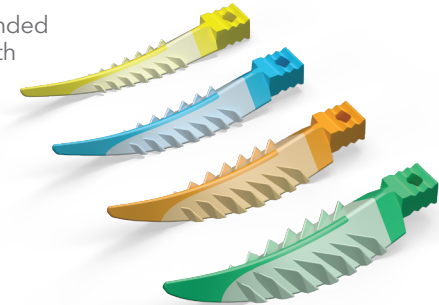
### Stack them up.

The smooth tunnel design accommodates stacking of wedges. This feature is extremely helpful in cases of gingival recession or when simultaneous wedging from the buccal and lingual is desired.



### Gentle on the papilla.

Smooth tunnel design and rounded edges glide over the papilla with less trauma.



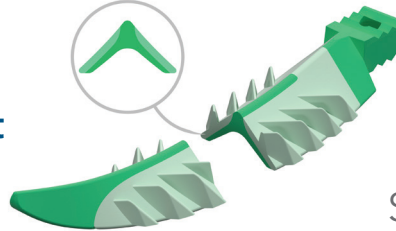
### No back-out.

Soft retentive fins smoothly fold down during wedge insertion and spring back when clear of the interproximal space, locking Strata-G™ Wedges in place.

### A better fit by design.

The thoughtful design and advanced materials of Strata-G™ Wedges promote a better cervical seal.

The hollow underside sits lower and seals deeper interproximally, while the soft fins allow Strata-G™ Wedges to adapt to concavities and irregularities.



## Strata-G™ Wedges

### Description

Strata-G™ Wedge Kit  
Strata-G™ Wedge Kit

### Item

SGK4  
SGK4-M

### Qty.

400  
200

### Refills

X-Small Yellow  
Small Blue  
Medium Orange  
Large Green

### Item

SGYL-M  
SGBL-M  
SGOR-M  
SGGR-M

### Standard

### Qty.

50  
50  
50  
50

### Bulk

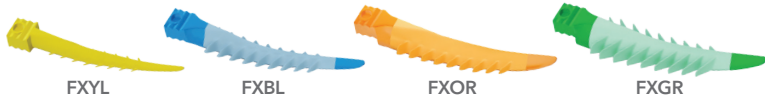
### Qty.

SGYL 100  
SGBL 100  
SGOR 100  
SGGR 100

**Helpful tip:** If you have used Garrison® wedges in the past, you may find it helpful to use a size smaller than before due to the Strata-G™ flared design.

# Composi-Tight® 3D Fusion™ Ultra Adaptive Wedges

Combining Soft-Face™ adaptive materials, a firm inner core and advanced mechanical features to produce a wedge that truly works. Every time.



## Description

Composi-Tight® 3D Fusion™ Wedge Kit  
Composi-Tight® 3D Fusion™ Wedge Kit

## Item Qty.

FXX4 400  
FXX4-M 200

## Standard

## Bulk

## Refills

Item	Qty.
X-Small Yellow	50
Small Blue	50
Medium Orange	50
Large Green	50

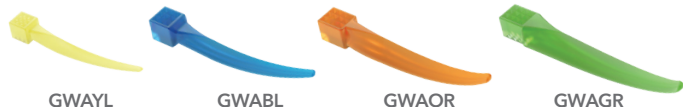
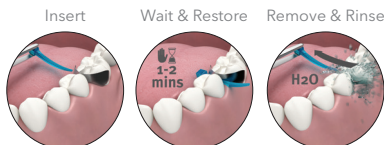
## Item Qty.

FXYL	100
FXBL	100
FXOR	100
FXGR	100



# A+Wedge®

Controls Gingival Bleeding



## Description

A+Wedge® Kit

## Item Qty.

GWAK4 200

## Bulk

## Refills

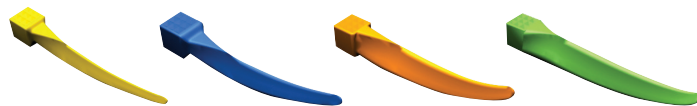
Item	Qty.
X-Small Yellow	100
Small Blue	100
Medium Orange	100
Large Green	100

Controls gingival bleeding with an aluminum sulfate coating that has an astringent effect on the gingiva, improves clarity of restoration area and eliminates need to apply an astringent separately

# G-Wedge™

Perfect wedge. Perfect contact.

If you prefer traditional wedge placement with either a hemostat or cotton pliers, G-Wedges give you the same great shape as WedgeWands®, just without the applicator wand.



GSWYL

GSWBL

GSWOR

GSWGR

## Description

G-Wedge™ Kit

## Item Qty.

GWK4 400

## Standard

## Bulk

## Refills

Item	Qty.
X-Small Yellow	100
Small Blue	100
Medium Orange	100
Large Green	100

## Item Qty.

GWYL	300
GWBL	300
GWOR	300
GWGR	300

# WedgeWands®

WedgeWands® are designed to twist off the wand, but many prefer to leave it attached to help retract the cheek and for easy removal after the procedure is complete.



## Description

WedgeWands® Kit

## Item Qty.

WK4 400

## Standard

## Bulk

## Refills

Item	Qty.
X-Small Yellow	100
Small Blue	100
Medium Orange	100
Large Green	100

## Item Qty.

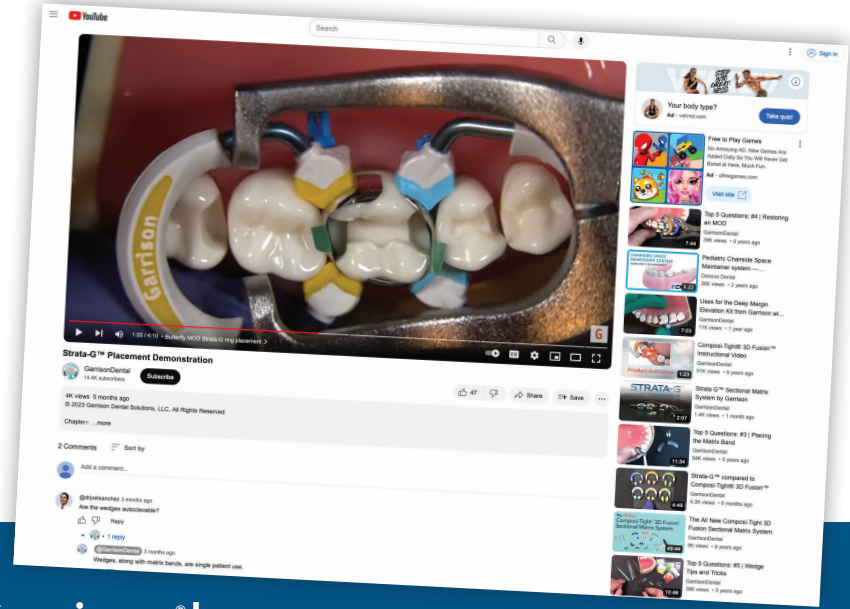
WYL	300
WBL	300
WOR	300
WGR	300

# Great technique tips and product help are only a click away!

*Join thousands of subscribers on our YouTube channel and get notified instantly when new content is posted.*

The Garrison® YouTube channel is NOT a collection of infomercials. It's all about helpful information on a wide variety of topics. From short two-minute tips on how to reduce flash on Class IIs, to more in depth live patient case presentations, the Garrison® channel delivers great content.

Go to [youtube.com/garrisdental](https://youtube.com/garrisdental) or search Garrison Dental on YouTube and subscribe today!



*Speaking of great content...*

## Get CE credits direct from Garrison®!

Go to the Learning Center at [garrisdental.com](https://garrisdental.com) to see a list of pre-recorded and upcoming live webinars—many with available CE.

Register for an online account on our website to sign-up for CE courses and manage your CE credits.



Garrison Dental Solutions  
Nationally Approved PACE Program Provider for FAGD/MAGD credit.  
Approval does not imply acceptance by  
any regulatory authority or AGD endorsement.  
9/1/2022 to 8/31/2026.  
Provider ID# 304999



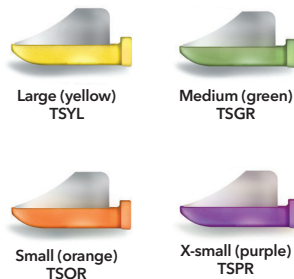
# FENDERWEDGE®

## Interproximal Tooth Shields

### Pre-separate and Protect

FenderWedge® prevents damage to the adjacent tooth and gingiva that can occur during Class II preparations.

FenderWedge® is a combination of a steel plate and a plastic wedge. Inserted into the interproximal space, it protects the tissue and separates the teeth, thus simplifying the application of a matrix.



### Clinical Tip



Place FenderWedge® prior to preparation to pre-separate and protect the adjacent teeth.

The plastic wedge—not just the metal shield—should firmly engage the interproximal surfaces of the teeth. This will provide the optimum pre-separation force and hold the FenderWedge® securely in place (Figures 1 and 2).

Figure 3 clearly shows marks from the bur along the shield. Much better to have those on the shield than on the adjacent tooth!

Once the preparation is complete, remove the FenderWedge® and place your matrix.

Dentistry and photos courtesy of Dr. Rob Ritter, Jupiter, Florida

Visit [garrisdental.com/](http://garrisdental.com/) learning to see Dr. Ritter's full case presentation.



## FenderWedge®

**Description**  
FenderWedge® Kit

**Item Qty.**  
TSK01 80

	Standard		Bulk	
	Item	Qty.	Item	Qty.
<b>Refills</b>				
X-Small Purple	TSPR-M	30	TSPR	60
Small Orange	TSOR-M	30	TSOR	60
Medium Green	TSGR-M	30	TSGR	60
Large Yellow	TSYL-M	30	TSYL	60

FenderWedge is NOT a sectional matrix system nor does it replace the use of a matrix band.



## IPR Management in Clear Aligners Therapy

Dr. Tommaso Weinstein, DDS, PhD

Interproximal space management is a very important issue in clear aligners therapy. This case presented crowding in upper and lower arches. It was treated with clear aligner therapy through a digital planification.

The interproximal reduction (IPR) was carefully planned. The multiple thicknesses of FitStrip™ allowed IPR to be performed with predictability and control. The patient reported excellent comfort during the procedure, better than what was reported with traditional strips.



**Fig 4-7.** Digital planification, before (4 and 5) and after (6 and 7). Numbers refer to IPR required.



**Fig 9.** Clear aligners in place. **Fig 10 and 11.** Direct composites on incisal edges.



**Fig 1, 2 and 3.** Initial situation, upper and lower arch.



**Fig 8.** Use of FitStrip™ for IPR.



**Fig 12 and 13.** Final result in upper and lower arch.



# **F**lexible **I**nterproximal finishers with a **T**wist

**FitStrips** are a complete line of interproximal trimmers and finishers from the company that invented tight interproximal contacts, **Garrison® Dental Solutions**.

**Do the Twist!** Twist the color-coded barrel to adjust FitStrips' curvature and it's automatically locked in place.

**One handy handle!** FitStrip's simple, attachable handle makes a world of difference for both clinician ease-of-use and patient comfort.



**Ready for a marathon!**  
FitStrips are very durable and long lasting. They stay sharp and ready to go even after multiple autoclave cycles.

### **Starts bold – finishes clean**

1. Medium grit for fast removal
2. Fine grit smooths things out
3. Super fine strips put the perfect finishing touch on things

**FitStrip™ Kit  
Comparison  
What FitStrip Kit  
Should I Use?**





**F**lexible  
**I**nterproximal finishers with a  
**T**wist



**The FitStrip™ kit that started it all!**

- Primary Function: Contouring Composites and IPR up to .30mm.
- Durable diamond abrasive on just one side to protect adjacent teeth
- The FitStrip™ serrated saw is the PERFECT instrument to separate accidentally bonded teeth and reduce over-tight contacts

### FitStrip™ Starter Kit

**FPSK01 contains:** 2 handles, 2 serrated, 4 single sided (1 of each .08 mm, .10 mm, .13 mm, .18 mm) 4 double sided (1 of each .11 mm, .15 mm, .21 mm, .30 mm)



**Most popular!**

**Your Complete Solution for Interproximal Reduction (IPR)!**

- Primary Function: IPR when .40mm and .50mm are needed, yet can still be used to contour composites
- IPR gauges for exact reduction
- Attachable handle for greater ease of use and patient comfort

### Universal Kit

**FPSK04 contains:** 2 handles, 1 IPR gauge, 4 single sided (1 of each .08 mm, .10 mm, .13 mm, .18 mm) 6 double sided (1 of each .11 mm, .15 mm, .21 mm, .30 mm, .40 mm, .50 mm)



**Subgingival FitStrips are the ideal solution for the cervical area!**

- Primary Function: Use with Composites, both for contouring and accessing cervical areas to remove overhangs or excess cements.
- Only 2.5mm height keeps abrasive below the contact point
- Safety zone protects contacts during insertion
- Extra thin at .05mm

### FitStrip™ Subgingival Finishing and Single Sided Kit

**FPSK08 contains:** 2 handles, 10 Strips: 2 subgingival super fine, 2 subgingival fine, 1 subgingival medium, 1 serrated saw, 1 each single sided .08 mm, .10 mm, .13 mm, .18 mm



**FitStrips** – a complete line of interproximal trimmers and finishers from the company that invented tight interproximal contacts, **Garrison Dental Solutions.**

**Kits** All kits come in a package of 10 FitStrips with 2 handles.

Description/Contents	Item	Primary Use
<b>Starter Kit for finishing/polishing</b> 2 serrated 4 single sided (1 of each .08 mm, .10 mm, .13 mm, .18 mm) 4 double sided (1 of each .11 mm, .15 mm, .21 mm, .30 mm)	FPSK01 (shown on page 18)	Finishing composites
<b>Universal Kit for IPR and finishing/polishing</b> 1 IPR gauge 4 single sided (1 of each .08 mm, .10 mm, .13 mm, .18 mm) 6 double sided (1 of each .11 mm, .15 mm, .21 mm, .30 mm, .40 mm, .50 mm)	FPSK04 (shown on page 18)	Finishing composites and IPR
<b>IPR Kit</b> 1 IPR gauge 10 double sided (2 of each .11 mm, .21 mm, .30 mm, .40 mm, .50 mm)	FPSK05	IPR
<b>Subgingival Finishing Kit</b> 3 subgingival super fine, 3 subgingival fine, 3 subgingival medium, 1 serrated saw	FPSK07	Subgingival
<b>Subgingival Finishing and Single Sided Kit</b> 2 subgingival super fine, 2 subgingival fine, 1 subgingival medium, 1 serrated saw, 4 single sided (1 of each .08 mm, .10 mm, .13 mm, .18 mm)	FPSK08 (shown on page 18)	Subgingival and finishing composites

Refills		Single Sided	Double Sided
Super fine 15 Micron		FPSXFSS 0.08 mm thick	FPSXFDS 0.11 mm thick
Fine 30 Micron		FPSFSS 0.10 mm thick	FPSFDS 0.15 mm thick
Medium 46 Micron		FPSMSS 0.13 mm thick	FPSMDS 0.21 mm thick
Coarse 90 Micron		FPSCSS 0.18 mm thick	FPSCDS 0.30 mm thick
Serrated		FPSSAW 0.05 mm thick	
Medium 46 Micron			FPSTMDS 0.40 mm thick
Medium 46 Micron			FPSXTMDS 0.50 mm thick
Super fine 15 Micron		FPSGXFSS 0.08 mm thick	N/A
Fine 30 Micron		FPSGFSS 0.10 mm thick	N/A
Medium 46 Micron		FPSGMSS 0.13 mm thick	N/A

**FitStrip™ replacement handles (2-pack) FPPSHANDLE-2**

IPR Gauge FPSGAUGE



# Rally™

Mini Polishers for Composite

## Rally gets you to the finish line faster!

The composite finish line that is. One lightning fast step will put a beautiful satin finish on posterior restorations or add the gray high shine polisher for a lustrous gloss on facials and anteriors. And if you want to be quick off the starting line, use the blue coarse grit for rapid reduction and shaping. Rally Mini Polishers get you across the finish line and on to your next patient in record time!

### Get to the point - Every time!

Single patient Rally means that you get a clean, fresh, properly shaped polisher every time.

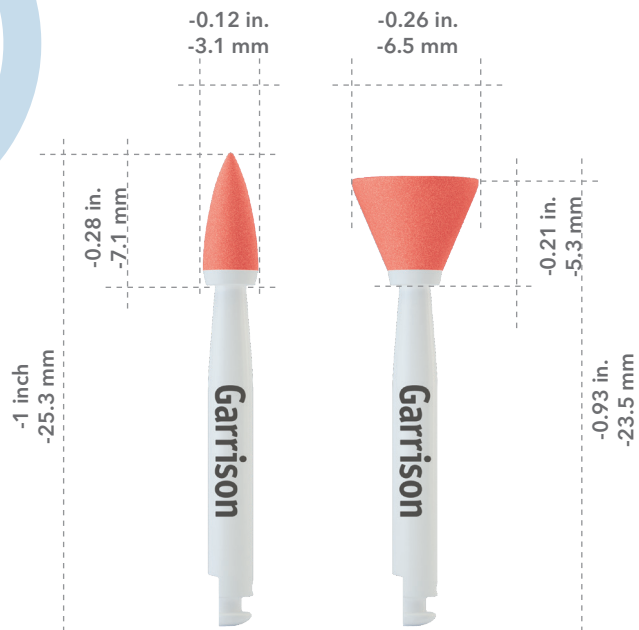
### A clean get-a-way!

You don't want to leave a trail of crumbs or spattered polishing paste on the track. Rally's diamond impregnated high shine final polishers won't crumble during use and don't require paste to create a beautiful, durable shine.

### Mini and mighty!

Rally's small size and tapered shaft create a truly agile polisher capable of reaching the smallest anatomical features without blocking your visibility.



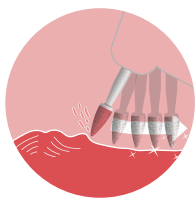


*Slow speed right angle latch shank. Use with water.*



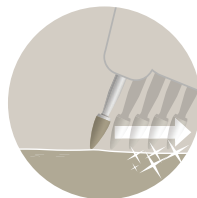
**Remove - Choose the Blue (silicon carbide)**

Polishers for fast removal and contouring



**Smooth - Choose the Red (aluminum oxide)**

Polishers for smoothing and silky shine



**Shine - Choose the Gray (diamond impregnated)**

Polishers for ultra high shine

**Rally™**

Item	Description	Qty.
FPCCK01	Composite Polisher Complete Kit	60 (10 each)

Item	Refills	Qty.
FPCCK010	Blue coarse grit point composite polisher	30
FPCCK040	Blue coarse grit cup composite polisher	30
FPCCK010	Red medium grit point composite polisher	30
FPCCK040	Red medium grit cup composite polisher	30
FPCCK010	Gray fine grit point composite polisher	15
FPCCK040	Gray fine grit cup composite polisher	15



Intra-oral Adjustment/Polishing  
for Zirconia and Lithium Disilicate

Adjust and Polish Zirconia and  
Lithium Disilicate the **eZr** Way!

## eZr Intra-oral Adjustment:



- **No chatter, chipping or microfracture** - Unlike diamonds bonded directly to a hard metal shaft, eZr's rubber substrate cushions the diamonds to prevent damage to the restoration.
- **No heat build-up** - The carefully engineered substrate does not transfer heat during use.
- **FAST!** - eZr's coarse grit blue grinders make your adjustments fast and convenient.

## eZr Intra-oral Polishing:



- **Unparalleled smooth polish** - Don't take our word for it! - "The eZr system is the only one I've tried that polishes zirconia to smooth!" Todd Brower, DDS, Holland, Michigan.
- **Increased physical stability** - Highly polished zirconia and lithium disilicate is stable and non-abrasive to opposing dentition.
- **No paste required** - Forget the mess and expense of polishing pastes. eZr™ is all you need.
- **No water required** - No need to use water when polishing. Water is only required for high speed.





1

Start by gross adjusting and contouring using the blue coarse grit grinders. Use the flat end taper for occlusal/labial/lingual/buccal surfaces and the disc for interproximal surfaces.



2

Use the green medium grit polishers for smoothing and pre-polishing. Use the point for the occlusal grooves, the cup for labial/lingual/buccal, and the disc for interproximal surfaces.



3

Use the orange fine grit polishers for high gloss polishing. Use the point for the occlusal grooves, the cup for labial/lingual/buccal, and the disc for interproximal surfaces.













Beautiful results!

Images courtesy of Dr. Riccardo Becciani, Italy



Slow speed right angle latch shank  
Steam autoclaveable

Item	Description	Qty.
FPZK01	Complete system kit Gross removal, smoothing, pre-polishing, and high gloss polishing	2 grinders 6 polishers
FPZC030	 Blue coarse grit disc Gross removal	5/pk
FPZC010	 Blue coarse grit flat end taper Gross removal	5/pk
FPZM010 (not in kit)	 Green medium grit small point polisher Smoothing and pre-polishing	5/pk
FPZM020	 Green medium grit large point polisher Smoothing and pre-polishing	5/pk
FPZM030	 Green medium grit disc polisher Smoothing and pre-polishing	5/pk
FPZM040	 Green medium grit cup polisher Smoothing and pre-polishing	5/pk
FPZF010 (not in kit)	 Orange fine grit small point polisher High gloss polishing	5/pk
FPZF020	 Orange fine grit large point polisher High gloss polishing	5/pk
FPZF030	 Orange fine grit disc polisher High gloss polishing	5/pk
FPZF040	 Orange fine grit cup polisher High gloss polishing	5/pk



## Direct cusp covering of vital element with a very deep cervical margin

Dr. Daniele Gensini

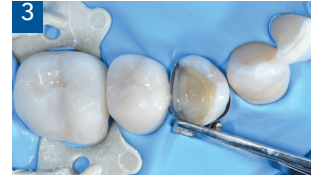
The case presents the need to seal the cervical margin, which is in a very deep position even if it can be isolated with a dam, and to recreate an adequate emergence profile. Thanks to the particular design of the Slick Bands™ matrices, this step was easy and made it possible to bring the restorative margin into a favorable position. Subsequently, after having recreated the direct covering of the missing cusp thanks to a previously created silicone index, the missing proximal wall was reconstructed with the aid of a Composit-Tight® 3D Fusion™ anatomical matrix, which was very useful for obtaining a correct emergence profile and an appropriate proximal contact point. Finally, the modeling of the restoration was completed and the correct occlusal contacts were checked.



**Figure 1.** Occlusal view of prepared tooth with cervical margin.



**Figure 2.** Slick Bands™ matrix placement with correct emergence profile.



**Figure 3.** Highly filled flowable composite for reconstruction of the deep cervical margin.



**Figure 4.** Restorative margin in a favorable position and with correct profile.



**Figure 5.** Correct adaptation of Composit-Tight® 3D Fusion™ matrix to the new restorative margin.



**Figure 6.** Lateral view of the correct emergence profile recreated.



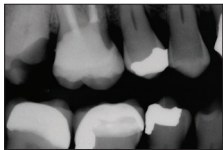
**Figure 7.** Occlusal check.

# Predictably relocate deep margins for better final restorations.

The conservative deep margin elevation procedure allows for the maximum conservation of natural tooth structure while helping to avoid more invasive procedures such as crown lengthening. Relocated supragingival margins facilitate easier scanning/impressions and proper isolation for improved bonding of inlays, onlays and direct final restorations.



**Clinical Case:** The margin elevation technique allows proper isolation and elevation of deep margin areas prior to restoring with an indirect partial coverage restoration (inlay or onlay). The use of the Garrison® Reel Matrix™ margin elevation band allows proper adaptation and seal of these deep areas so that a composite margin elevation can be performed.



Pre-op X-ray shows the margin location for #17 subgingivally prior to elevation.



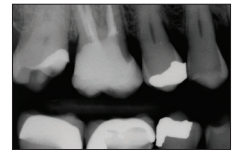
Seat the margin elevation band subgingivally. The narrowness of the matrix will allow it to slide subgingivally and seal the margin efficiently.



Seal the dentin and elevate the deep margin with restorative composite.



Remove the matrix and finish with a #12 blade to remove any flash. The deep margin has been relocated 1-2 mm supragingival for predictable isolation and delivery of an indirect bonded restoration.



Post-op X-ray shows the completed margin elevation prior to final restoration being completed.

Photos courtesy of Matthew A. Nejad DDS, Beverly Hills, CA



Real Easy. Real Tight. Real Fast!

## For all posterior restorations!

**1 Real Easy:** The reels pop into the handle without any fuss! Press the reel into the handle and retract the grippers to lock the reel in place. Plus, if you use the regular matrices (yellow hubs) they can be easily pushed through contacts.

**2 Real Tight:** Tight contacts and excellent contour are what Reel Matrix is all about. These thin matrices are pre-contoured in three dimensions and when combined with anatomical wedges and separator rings, the result is amazingly tight contacts at the natural height of contour.

**3 Real Fast:** Pre-loaded reels mean you can just lock them in and go. The retainerless design greatly speeds up quadrant work while improving visibility and patient comfort. Add a SG500 separator ring and you virtually eliminate buccal and lingual flash.



See page 24  
for Dr. Gensini's  
Margin Elevation case.



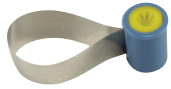
**RM500H**  
Margin elevation



**RM100D**  
5mm deadsoft



**RM200D**  
6.3mm deadsoft



**RM100H**  
5mm regular



**RM200H**  
6.3mm regular



**RM100B**  
5mm blue



**RM200B**  
6.3mm blue



**DME-01**



**RMK05**



Margin elevation band is .002" thin. Super-thin dead-soft bands are .0012" thin. Regular bands are .0015" thin and can be placed through existing contacts. A Blue View cure-through option at .0029" thin is available if you prefer trans-enamel curing.

Item	Description
DME-01	<b>Deep Margin Elevation Kit</b> 50 RM500H Margin Elevation band reels 1 RMH-100 Reel Matrix™ tensioning instrument 5 FXH150 3D Fusion™ Firm bands 10 FXH200 3D Fusion™ Firm bands 20 FXH300 3D Fusion™ Firm bands 20 FXYL 3D Fusion™ wedges 20 FXBL 3D Fusion™ wedges 20 FXOR 3D Fusion™ wedges 20 FXGR 3D Fusion™ wedges
RMK05	<b>Kit</b> Contains 80 matrices (20 RM500H, 10 ea. RM100D, RM200D, RM100H, RM200H, RM100B, RM200B) 1 tensioning instrument 1 PerForm™ instruments (set of 2)

Refills		Qty.
RM500H	Margin elevation band	50
RM100D	5mm dead-soft matrices	50
RM200D	6.3mm dead-soft matrices	50
RM100H	5mm regular matrices	50
RM200H	6.3mm regular matrices	50
RM100B	5mm blue matrices	50
RM200B	6.3mm blue matrices	50
RMR100	5.9mm empty reel	100
RMR200	6.7mm empty reel	100
RMH-100	Tensioning instrument	

### IMPORTANT ACCESSORIES

PerForm™ Proximal Contact Instrument  
(included in RMK05 kit)

Great for core build-ups

# SlickBands™

## Tofflemire-style

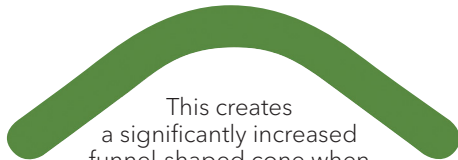
Non-stick technology developed by Garrison®: Modern bonding agents can adhere to uncoated matrix bands—Slick Bands™ slide right out.

## Exclusive Garrison® shapes!



### Proprietary Right Curve™ design.

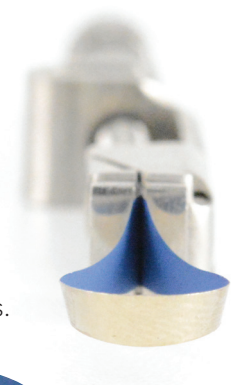
The increased curvature of the **Right Curve™ matrix band** produces outstanding gingival seal and reaches over to adjacent teeth easier for broader, deeper contacts.



This creates a significantly increased funnel-shaped cone when wrapped around a tooth. It's the right choice for many restorations.

### Margin Elevation Band

The deep margin elevation technique is a useful non-surgical approach to treating deep localized margins.



A margin elevation matrix will give you the best gingival adaptation and contour for the deep margin areas. It is trimmed in height to allow improved adaptation to deep margin areas.

# Slick Bands™ Tofflemire-style Matrices

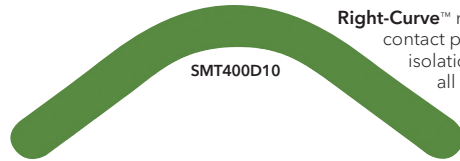
**Clinical Tip:** Use dead-soft green bands when contact is COMPLETELY broken with adjacent teeth for maximum burnishability. When contact is NOT broken with adjacent teeth, use regular gray bands.

## IMPROVED Dead-soft Bands

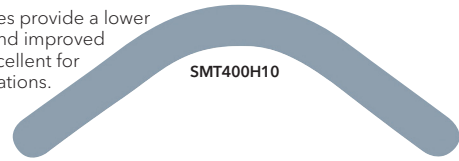
with non-stick coating

## Regular Bands

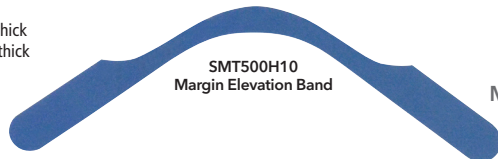
with non-stick coating



Right-Curve™ matrices provide a lower contact point and improved isolation. Excellent for all restorations.



Tofflemire-style matrices are .0014" thick  
Margin elevation matrices are .002" thick



See page 24  
for Dr. Gensini's  
Margin Elevation case.



## Slick Bands™

**Description**  
Slick Bands Kit  
300 Assorted Slick Bands  
100 G-Wedges  
PerForm instruments (1 set; shown on page 35)

**Item**  
SMTK06

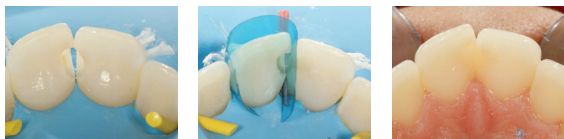
Dead Soft Bands	Item	Standard (-M)	Bulk
		Qty.	Qty.
#1 Universal Tofflemire	SMT200D10	50	100
Right-Curve	SMT400D10	50	100
#13 Pedodontic	SMT050D10	50	100
#2 Subgingival	SMT300D10	50	100

Regular Bands	Item	Standard (-M)	Bulk
		Qty.	Qty.
#1 Universal Tofflemire	SMT200H10	50	100
Right-Curve	SMT400H10	50	100
#13 Pedodontic	SMT050H10	50	100
#2 Subgingival	SMT300H10	50	100

Regular Bands	Item	Standard (-M)	Bulk
		Qty.	Qty.
Margin elevation band	SMT500H10	50	100

To order standard packs, add a -M after the item #.

## Cases using anteriors/cervicals



Images courtesy of Dr. Zunzarren, DDS



Images courtesy of Dr. Abdi Sameni, DDS

### VariStrip™

How can you produce a natural curvature for anterior composites and eliminate black triangles? Check out Garrison's curved "Varistrips" to recreate the natural interproximal anatomy for anterior teeth.

- Helps avoid incorrect flat embrasures, black triangles and food traps that can be caused by old-fashioned straight mylars.
- No need for wedges on subgingival fillings, as the contours naturally close off the apical aspects for you.
- Excellent for class IVs, diastema closures, etc.
- Variable height allows you to slide each strip in until it precisely matches the tooth height before cutting off excess.
- The blue tint does not affect cure, but ends the annoyance of losing clear strips on patient bibs or bracket tables.

Blue View VariStrips—a must-have super-simple product for every dental office.

*Dr. Michael Curtis, Bridgeport, CT, USA*



### Clinical Tip

After using your preferred bonding procedure, place the restorative material into the preparation in advance of using the cervical matrix.

Place the cervical edge of the matrix against the tooth (Fig. 1).

While pressing the gingival edge of the matrix firmly against the tooth, roll the matrix onto the tooth (Fig. 2). Excess material will be expressed from the occlusal edge of the matrix rather than subgingivally, greatly simplifying clean up.

Cure directly through the matrix.

**For product information on the cervical kit, refer to page 34.**



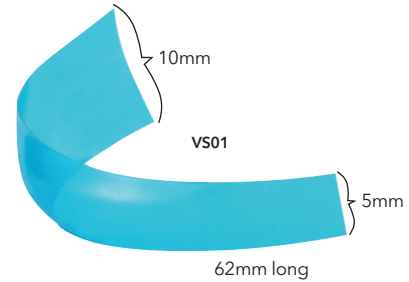


Photo  
courtesy of  
David S. Hornbrook, DDS, FAACD  
International Lecturer and  
Private Practice, San Diego, CA

## Our Most Popular Anterior Matrix

# BlueView™ VariStrip™

Contoured Anterior Matrices



The Blue View™ VariStrip™ is a revolutionary contoured anterior matrix providing the optimum curvature and band height for virtually every anterior restoration. The 0.0020" thin plastic anatomical strip is tapered from one end to the other. You can place the strip interproximally and then slide it until the tooth height is perfectly matched. The pre-contouring easily recreates the occluso-gingival anatomy, avoiding flat embrasures.

**Curved Form/tapered:** Provides the optimum curvature and band height for virtually every anterior restoration.

**Blue Tint:** Provides contrast between matrix and tooth structure without compromising composite polymerization.

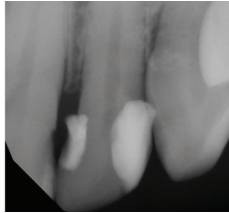
## Blue View™ VariStrip™

Item	Qty.
VS01	100
VS02	50



## Case using the Fusion™ Anterior Matrix System

Dr. JD Corey, DDS, Muskegon, Michigan



**Figure 1.** Flexible matrix systems have a tendency to deform subgingivally. This can lead to non-hygienic restorations and decay on adjacent teeth (as demonstrated in this pre-operative radiograph).



**Figure 2.** Rubber dam is in place and teeth have been pumiced before removal of the decay.



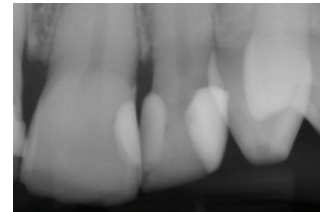
**Figure 3.** Decay has been removed, the preparations have been refined, treated with gluma, etched, and bonded. These steps were completed before placing the matrix bands and wedge to ensure proper coverage of the restorative materials to the preparations.



**Figure 4.** Stacked matrix bands have been placed to provide facial access and are ready to be engaged by the wedge.



**Figure 5.** Completed restoration after removal of the rubber dam.



**Figure 6.** A post-operative radiograph showing a broadened interproximal contact, improved emergence profile, and appropriate marginal integrity of the restorations.

To see more cases, go to the Learning Center at [garrisondental.com/learning](http://garrisondental.com/learning)

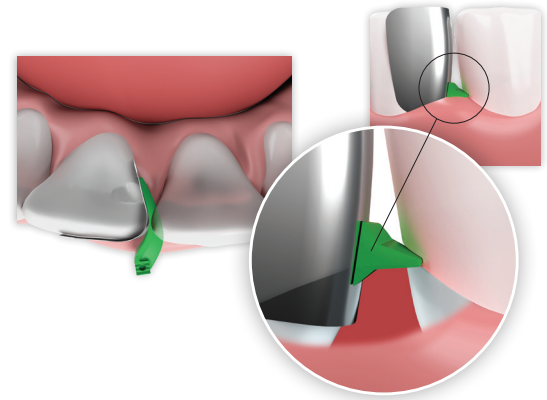
# Fusion™ Anterior Matrix System

The **Fusion™ Anterior Matrix System** from Garrison® gives you the materials and techniques to restore many types of anterior lesions with confidence.



## ANK01 Contains:

- 50 short bands
- 50 tall bands
- 25 extra small wedges
- 25 small wedges
- 25 medium wedges
- 25 large wedges



## Fusion™ Anterior Bands

Refills	Item	Standard		Bulk	
		Qty.	Item	Qty.	Item
Short	AN100-M	50	AN100	100	
Tall	AN200-M	50	AN200	100	



Learn more about the Garrison® Fusion™ Anterior Matrix System



Clinical Case using the Garrison® Fusion™ Anterior Matrix System with Dr. JD Corey



## Fusion™ Anterior Wedges

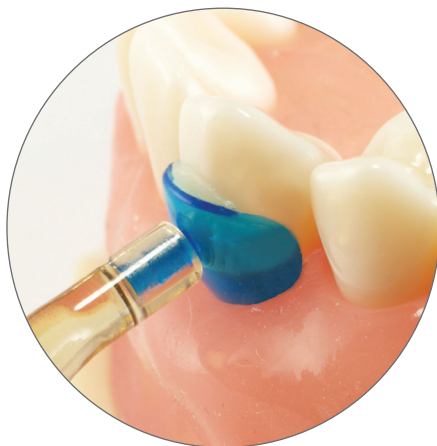
Description	Item	Standard		Bulk	
		Qty.	Item	Qty.	Item
Fusion Anterior Wedge Kit	ANK4	400			
Fusion Anterior Wedge Kit	ANK4-M	200			
X-Small Yellow	ANYL-M	50	ANYL	100	
Small Blue	ANBL-M	50	ANBL	100	
Medium Orange	ANOR-M	50	ANOR	100	
Large Green	ANGR-M	50	ANGR	100	

# BlueView™

## Cervical Matrices

"I love the Blue View Cervical Matrix! It works so well. My assistants love watching me use this system. The patients love the excitement in our faces. It makes the process easy and fast. Gotta love that! We are also hooked on using the ReelMatrix. Thanks so much for making great products."

Cynthia Brattesani, DDS,  
San Francisco, CA, USA



### Flexible

- adapts to individual anatomy for improved contours
- use it to directly compact the composite into the restoration
- thin edges allow excess composite to flow out for improved anatomy

### Blue Tint

- provides contrast between matrix and tooth structure
- does not compromise composite polymerization

### Convenient!

- protects the restoration from contamination
- eliminates time spent hand sculpting
- eliminates air-inhibited layer
- reduces finishing time
- 6 sizes for a perfect fit

### KCMK2 INCLUDES

- 240 Assorted Matrices
- 1 Matrix placement Instrument

### MATRICES INCLUDED:

- Anterior/Premolar  
KCMA60 – 50 pcs
- Molar  
KCMA70 – 50 pcs
- KCMA10 – 35 pcs
- KCMA20 – 35 pcs
- KCMA30 – 35 pcs
- KCMA40 – 35 pcs

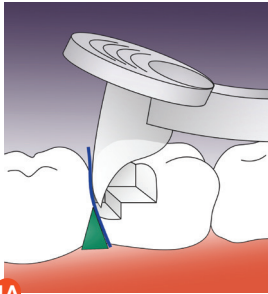
## Blue View™ Cervical Matrices

Item	Description
KCMK2	Assortment Kit w/instrument

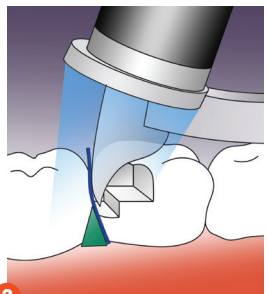
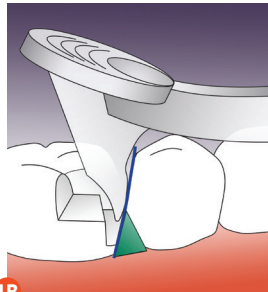
### Refills

KCMA10	Refill 100 pack	
KCMA20	Refill 100 pack	
KCMA30	Refill 100 pack	
KCMA40	Refill 100 pack	
KCMA60	Refill 100 pack	
KCMA70	Refill 100 pack	
KCMINST1	Placement Instrument	

## How PerForm™ works:



**STEP 1:**  
Place the first composite increment. Press PerForm™ into the uncured composite increment and either push (distal; fig. 1A) or pull (mesial; fig. 1B).



**STEP 2:** Place the curing light directly on the Fresnel lens and cure.

# PerForm

Proximal Contact Instruments

## PerForm puts you in control.

- Improves contacts with any matrix system
- Control the height and breadth of contacts
- Increase the tightness of contacts
- Unique lens controls curing light diffusion
- Steam autoclave only

### PerForm™

Item	Kit	Qty.
CFK01	PerForm (1/ea. size)	2/pk
CF100	1.1 mm Small Instruments	2/pk
CF200	2 mm Large Instruments	2/pk



"To ensure a tight contact a bulk fill flowable was placed in one proximal box at a time and the mylar held against the adjacent tooth with a PerForm™ proximal contact instrument. This ensures that the contact is tight and well-formed while light curing through it."

*Dr. Jack D. Griffin, Jr., DMD, MAGD  
Weldon Spring, MO*

# Composi-Tight® Matrix Forceps

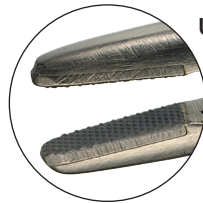
Precise Placement, Unbeatable Grip.



**Check out the GRIP!** Effortlessly remove matrix bands that otherwise would be a struggle.



**Precise Placement:** The tips have a 75-degree angle with an occlusal-gingival orientation, providing a more appropriate placement angle than cotton forceps. The petite, carbide tips allow the matrix to be grasped at its upper edge to prevent distortion of the interproximal area of the band.



**Unbeatable Grip:** The tungsten carbide tips provide exceptional grip and tactile control for tough access cases.

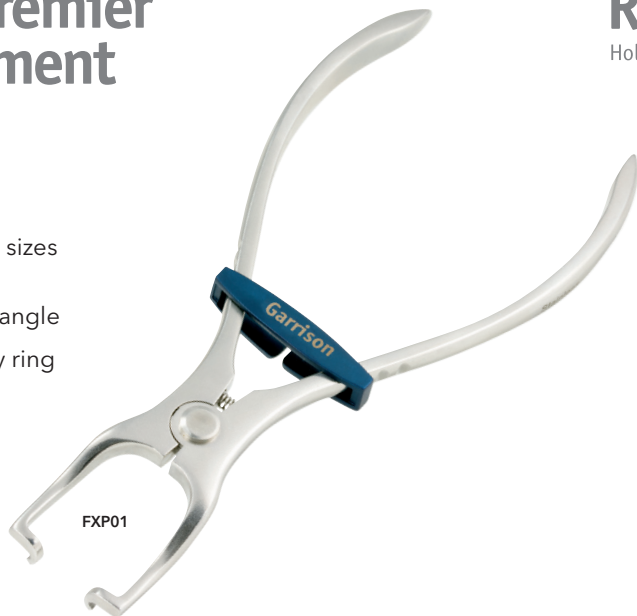
## Matrix Forceps

BFA-1

Angled tip for occlusal placement

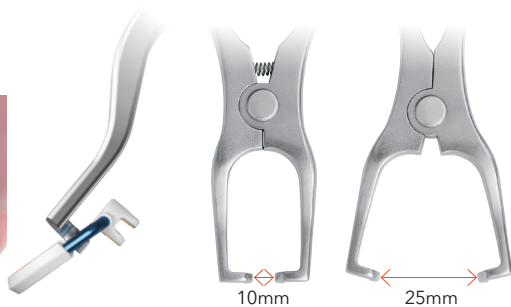
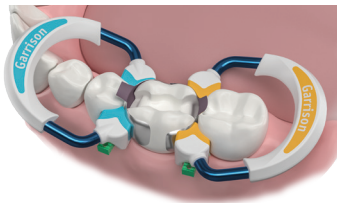
# Garrison® Premier Ring Placement Forceps

- Extra durable
- Designed for all hand sizes and hand strengths
- Improved placement angle
- Traditional or butterfly ring placement



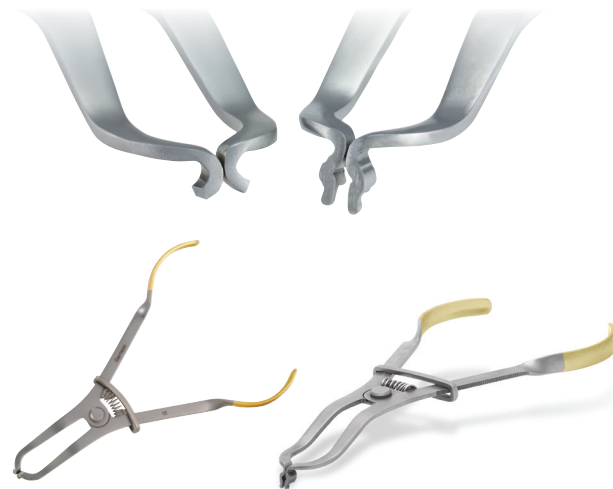
**Garrison® Premier Ring Forceps – Improved!**

FXP01



# Ring Placement Forceps

Holds all your sectional matrix system rings.



**Ring Placement Forceps**

AUMRDF-100

**Universal Forceps**

for placing rubber dam clamps and rings

UNVF-100



# Composite Instruments Nonstick titanium-nitride coated

Our multi-function instruments have double condenser configurations and carving blades on opposite ends. Now you can place, pack, shape and carve your way to perfectly contoured composite restorations without ever having to switch instruments!

- Large-diameter, lightweight handles for improved ergonomics.
- Provides non-stick surface for placement and shaping of composites.
- 40% smoother than stainless steel for a non-porous, non-stick surface.
- Withstands diverse cleaning/sterilization methods, including ultrasonic cleaning.



**"Skippy Special"**

TN008

Item	Description
TN008	"Skippy Special" 2 condensers, ball burnisher, blade, acorn



**5-in-1**

TN009

Item	Description
TN009	5-in-1 Multi-Function Instrument 2 blades, 2 condensers, acorn



**Item**    **Description**

TN001    **Medium Blades**  
Placement of composite material  
Gingival retraction to sculpt under free margins  
Burnishing matrix bands



TN002    **Medium Blade with Medium Plugger**  
Contouring small Class I, II, V  
Packing composite material into conservative preparations  
Burnishing matrix bands



TN003    **Medium Blade with Large Plugger**  
Contouring large Class I, II, V  
Packing composite material into large preparations  
Convex plugger tip minimizes pullback of composite material



**Item**    **Description**

TN004    **Extra Thin Blades**  
Reach under margins to hone and sculpt  
Sculpting interproximally  
Packing cord in gingival crevice



TN005    **Long Extra Thin Blades**  
Allows additional access for hard-to-reach posterior contouring and shaping  
Sculpting interproximally  
Packing cord in gingival crevice






TN006    **Small/Medium Multi-Function Plugger**  
Placement of composite material in smaller Class II and III  
Packing material toward gingival seats  
Carving occlusal anatomy with acorn carver



# Matrix Selection Guide

Being the Matrix Company, one of the most common questions we get is “which matrix do I use where?” While personal preference will drive much of the decision process, below is a chart that can provide a good starting point.

Procedure	Recommended Materials	Page	Special Notes
<b>Distal of canine, short or malpositioned</b> 	Strata-G™ Sectional Matrix Kit	4–5	MOST POPULAR! Separator rings designed to hold firmly on tough cases.
	Reel Matrix™—Metal or Blue View	26–27	Retainerless Tofflemire-style matrices, contoured and easy to apply.
	Slick Bands™ Tofflemire-Style Matrices	28–29	Traditional Tofflemire-style with non-stick coating.
<b>Conservative Class II</b> 	Strata-G™ Sectional Matrix Kit	4–5	MOST POPULAR! Superior contacts with minimal flash.
	Reel Matrix™—Metal or Blue View	26–27	Retainerless Tofflemire-style matrices, contoured and easy to apply.
	Slick Bands™ Tofflemire-Style Matrices	28–29	Traditional Tofflemire-style with non-stick coating.
<b>Slightly wide and/or deep</b> 	Strata-G™ Sectional Matrix Kit	4–5	MOST POPULAR! Superior contacts with minimal flash.
	Reel Matrix™—Metal or Blue View	26–27	Retainerless Tofflemire-style matrices, contoured and easy to apply.
	Slick Bands™ Tofflemire-Style Matrices	28–29	Traditional Tofflemire-style with non-stick coating.

Procedure	Recommended Materials	Page	Special Notes
<b>Large Class II with missing cusps</b> 	Strata-G™ Sectional Matrix Kit—Green Wide Prep Ring	4–5	EXCLUSIVE! Dentistry's first Wide Prep ring greatly simplifies these more challenging restorations.
	Reel Matrix™—Metal or Blue View	26–27	Retainerless Tofflemire-style matrices, contoured and easy to apply.
	Slick Bands™ Tofflemire-Style Matrices	28–29	Traditional Tofflemire-style with non-stick coating.
<b>Small to medium size Class III</b> 	Fusion™ Anterior Matrix System	32–33	Bands and wedges with ideal gingival-incisal curvature for many types of anterior lesions.
	VariStrip™ Contoured Anterior Matrices	31	Pre-contoured in three dimensions AND tapered to provide the ideal band height and contour.
<b>Large Class III or Class IV</b> 	Fusion™ Anterior Matrix System	32–33	Bands and wedges with ideal gingival-incisal curvature for many types of anterior lesions.
	VariStrip™ Contoured Anterior Matrices	31	Pre-contoured in three dimensions AND tapered to provide the ideal band height and contour.
<b>Class V</b> 	Blue View™ Cervical Matrix	34	Contours and directly compresses resin while eliminating air-inhibited layer.
<b>Crown build-ups, post and core</b> 	Reel Matrix™	26–27	Best choice. Margin Elevation band available for very deep buildups. Retainerless convenience.
	Slick Bands™ Tofflemire-Style Non-Stick Matrices	28–29	Margin Elevation band available for very deep buildups if you prefer a traditional matrix retainer.

# Order Form

Fax: 616.842.2430

Item Number	Description	Quantity	Price/Unit	Total Price
		Sales Tax		
		Total Price		

Doctor's Name \_\_\_\_\_

Contact Name \_\_\_\_\_

Address \_\_\_\_\_

City \_\_\_\_\_ Province \_\_\_\_\_ Postal Code \_\_\_\_\_

Phone \_\_\_\_\_ Fax \_\_\_\_\_

Email \_\_\_\_\_

All prices subject to change without notice. Appropriate shipping charges and sales tax will be added. Special offers not valid with any other advertised specials.

toll free 888.437.0032 | garrisondental.com

## Customer Service Information

- Call     **888.437.0032 Toll Free**  
          (USA & Canada)  
  
          616.842.2244
- Fax       616.842.2430
- Email     gds@garrisondental.com
- Online    **[garrisondental.com](http://garrisondental.com)**  
          Look for our Learning Center  
          with clinical tips, case studies  
          and CE webinars.
- Mail       150 DeWitt Lane  
          Spring Lake, MI 49456  
          USA

## Distribution

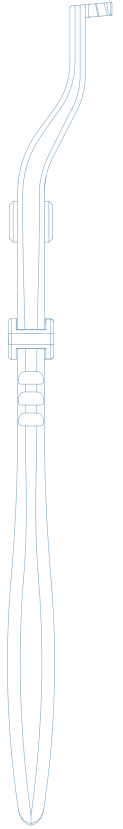
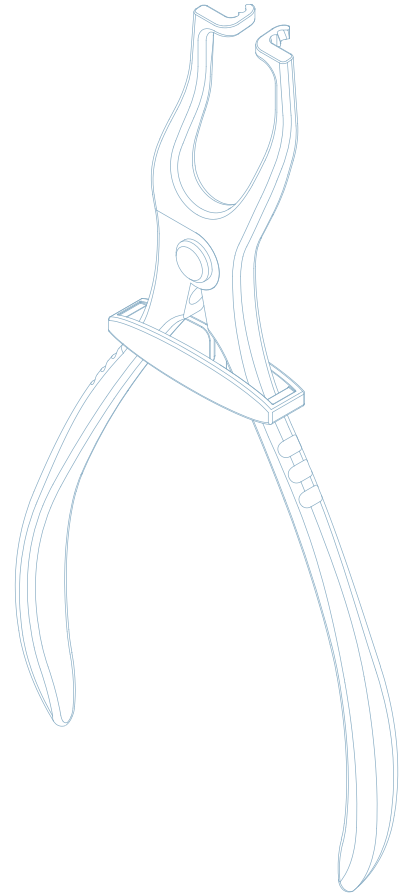
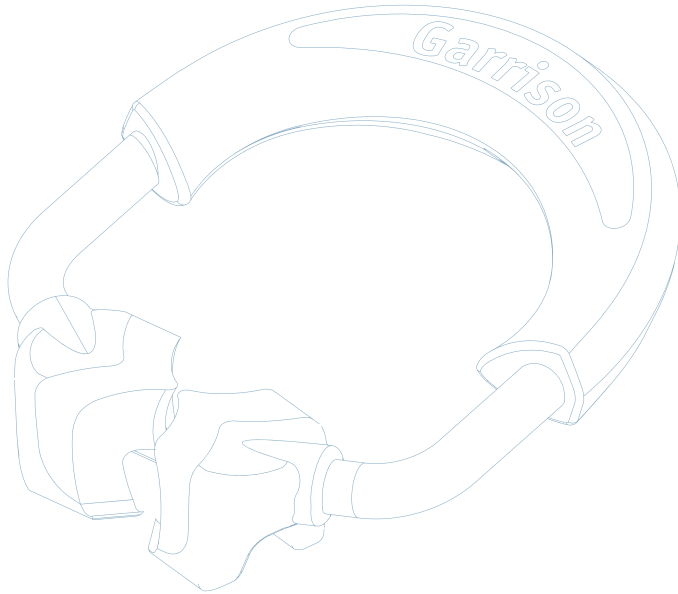
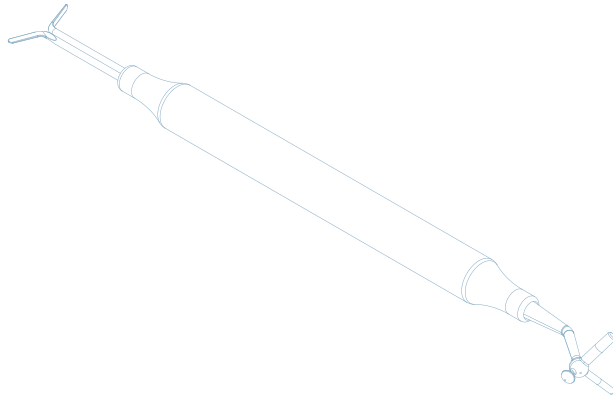
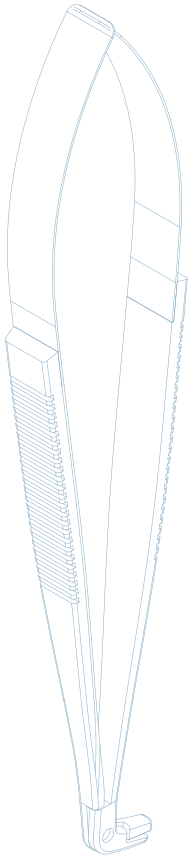
Garrison is a global leader for practical and innovative dental products and accessories, with distributors worldwide.

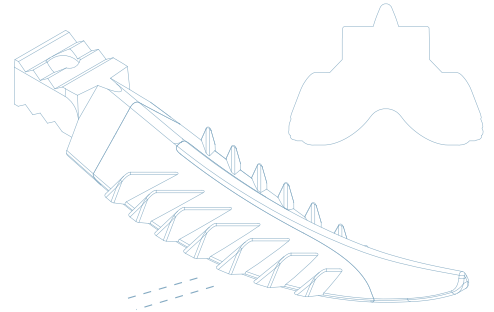
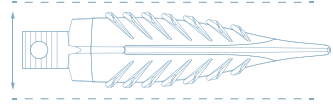
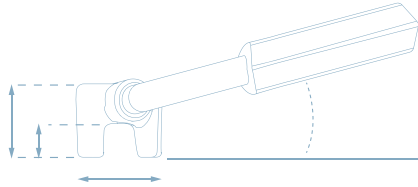
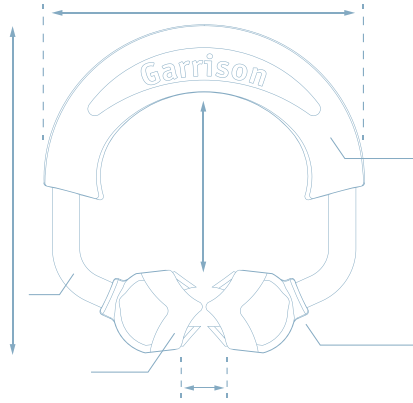
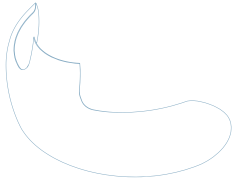
We are pleased to announce that your favorite Garrison products are available through several full-service dealers in Canada.

To find a dealer, contact our headquarters in Spring Lake, Michigan. Phone: 888.437.0032 or Email: [gds@garrisondental.com](mailto:gds@garrisondental.com)



Order Toll Free • Order by Fax • Order Online • Order by Mail





## Garrison® Guarantee

You can buy with complete confidence when you select Garrison products. We support all our products with expert customer service, outstanding warranties, and unrivaled satisfaction guarantees. Please visit our website for details.

**Garrison**®

150 DeWitt Lane | Spring Lake, MI 49456 USA  
toll-free 888.437.0032 | [www.garrisondental.com](http://www.garrisondental.com)

RLCACAT124