

Inspired Solutions from Premier®



Premier®

Award-winning Hygiene Product Suite

Innovation • Efficacy • Ergonomics • Safety

*No matter what your dental hygiene needs are,
Premier's got you covered!*

Enamel Pro® Prophy Paste - See page 9

NEW BioGREEN™ Micro-Applicators - See page 26

AeroPro®

Cordless Prophylaxis Handpiece

AeroPro® Performs Best!

Less Aerosol, Exceptional Ergonomics

AeroPro® generates less aerosol, less splatter vs. other leading handpieces according to a new University of California Irvine study*.

Plus, AeroPro's light-weight, ergonomic cordless and pedal-less handpiece gives you the mobility you want, the choice of prophylaxis angles you like, and the control you need.

- ✓ Less aerosol & less splatter – *precise finger-tip speed control*
- ✓ Promotes hand & wrist health – *lightweight, ergonomic design*
- ✓ Removes stains effectively – *long-lasting power gets you through the day*
- ✓ Unsurpassed 3-year warranty – *handpiece & the battery!*

DENTAL PRODUCTS REPORT™



DrBicuspid.com
THE BEST OF DENTISTRY

AeroPro®

5500510 AeroPro® Complete Package
(3) Autoclavable Outer Sheaths,
1 each: Motor Component, Charging Station,
AC Adapter, Stand, Box of 500 Disposable Barriers,
Accessories

Best
value!

5500500 AeroPro® Basic Kit
(1) Autoclavable Outer Sheath,
1 each: Motor Component, Charging Station,
AC Adapter, Stand, Box of 500 Disposable Barriers,
Accessories

5500520 AeroPro® Autoclavable Outer Sheath

5500530 AeroPro® Disposable Barriers - Box of 500



**Accepts most
disposable angles**
Can be rotated 360°

Quick-touch button
Easily controls speeds

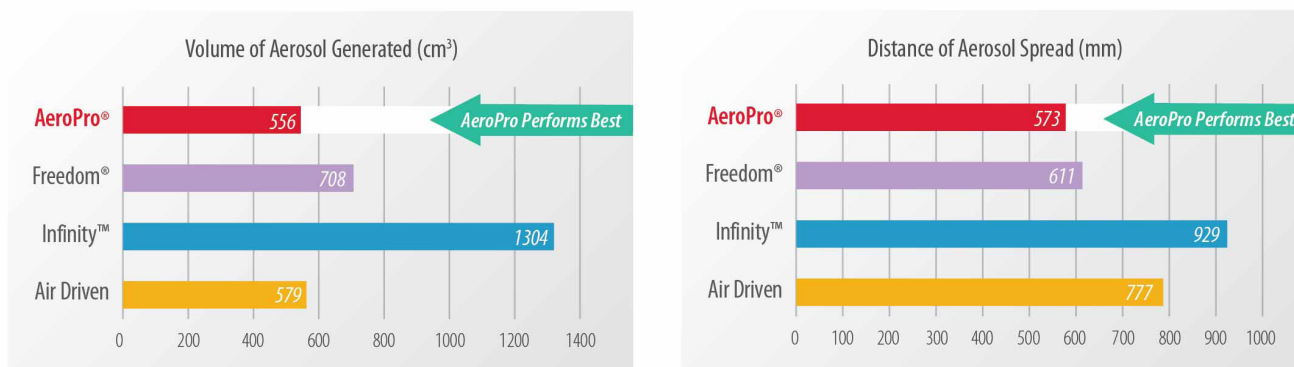
Dimpled silicone grip
Improves tactile feel while
preventing slippage

Quiet and powerful motor
Constant speed without
extra pressure

**ChargeSMART™
Battery Technology**
Charges quickly and provides
lasting power for all day use

*Based on a University of California Irvine study, 2021.

THE RESULTS ARE IN: AeroPro® generates less aerosol than the competition*



*Effect of Handpiece and Polishing Speed on Volume of Aerosol Generated and Distance of Aerosol Spread Using No Suction.
Based on a University of California Irvine study, 2021. Data on file. / Freedom and Infinity are not trademarks of Premier. / 0521069



Less Aerosol,
Less Splatter



Ergonomic &
Lightweight

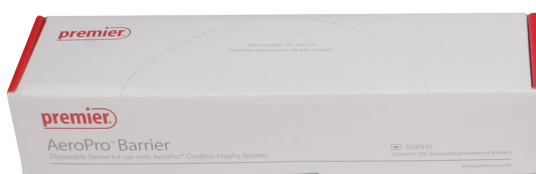


Faster
Polishing



Cordless-
Total Mobility

*With times like these, you need to go pro.
AeroPro – the right product for right now.*



AeroPro® Complete Package Shown

BioCoat®

Bioactive Resin Pit & Fissure Sealant

Bioactive Protection is Here!

Daily remineralization, Exceptional protection.

Award-winning BioCoat® with SmartCap® Technology is a true breakthrough. That's because BioCoat is the only bioactive resin pit and fissure sealant that delivers daily remineralization for long-term bioactive protection. This patented technology provides the benefits to strengthen tooth enamel and protect against acid attacks. BioCoat's filled formation delivers durability that resists cracking, chipping and fractures.

BioCoat® with SmartCap® Technology delivers:

- ✓ Relentless protection – *daily remineralization from extended release of fluoride, calcium & phosphate ions*
- ✓ Bioactive pit and fissure sealant – *strengthens enamel & helps provide defense against acid attacks*
- ✓ Opaque shade with fluorescence – *makes verifying placement & checking sealant integrity easier*
- ✓ Outstanding handling and adhesion – *easy application ensures sealed margins & excellent retention*





Figure A
Dye Penetration
Microleakage Study

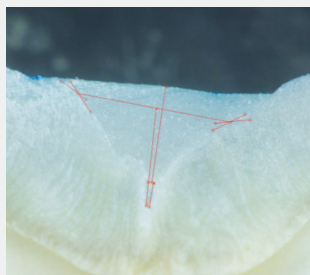
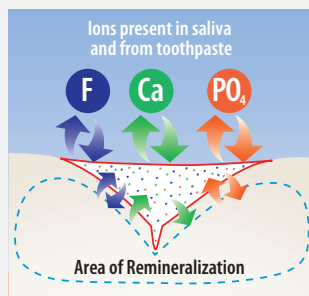


Image courtesy of Shalom Mehler, DMD

BioCoat's thixotropic properties allow for thorough penetration and adaptation into even the tiniest pits and fissures. No dye penetration indicates no microleakage.[†]

Figure B
Schematic of clinical situation
seen in Figure A



- Sealant
- Area of Remineralization
- SmartCap Microcapsules

See
page 29 for
Sleeve-It™
Barriers

- 3001530 BioCoat Standard Pack
Contains: One 1.2ml syringe and five disposable applicator tips
Shade: White
- 3001535 BioCoat Applicator Tips
Contains: 100 disposable applicator tips
- 3001531 BioCoat Value Pack
Contains: Four 1.2ml syringes and 20 disposable applicator tips
- 3001532 BioCoat Bulk Pack
Contains: Twenty 1.2ml syringes

BioCoat is **not** formulated with Bisphenol A (BPA).

No special technique is required to place BioCoat.



Clean pits and fissure thoroughly with pumice and a 2pro® disposable prophylaxis angle. Rinse and dry.



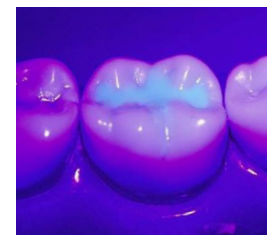
Etch pit and fissures for 20 seconds using Spot-On™ Etch or Premier phosphoric acid etch.



Thoroughly rinse and dry – maintain a dry field.



Apply BioCoat to pit and fissures – light cure for 20 seconds.



And now, BioCoat fluoresces under black light to make verifying placement and checking sealant integrity easier.

Images courtesy of Shalom Mehler, DMD

[†] BioCoat Micrograph taken after Dye Penetration Microleakage Study (21 days at 37°C and then thermocycled for 2000 cycles)

Enamelon®

Preventive Treatment Gel

Be the Hero!

*Enamelon Delivers Everyday Relief for
Sensitivity & Dry Mouth Tissues + Protection*

Be the hero by building your practice and pleasing your patients. Next time patients complain of sensitivity or dry mouth, come to the rescue with Enamelon's 2-way Protection Power.

First, Enamelon's active ingredient, stannous fluoride, has been clinically proven to desensitize teeth and help prevent caries and gingivitis.¹ Then, with its patented amorphous calcium phosphate (ACP) technology¹, Enamelon actually helps strengthen tooth enamel as well. Unlike other treatment gels, Enamelon helps prevent caries by providing 3x greater protection against acid challenges compared to 5000ppm fluoride toothpastes.²

The non-abrasive gentle formula with Hydramulsion reduces symptoms of dry mouth through its long-lasting coating that soothes and lubricates tissues. Enamelon is your professionally-dispensed solution to give your patients the relief they want and the enamel protection they need. Every time.

More protection Less fluoride^{2,3}

Enamelon 2-Way Protection Power

- ✓ Stops sensitivity in its tracks
- ✓ Soothes & moisturizes tissues for dry mouth
- ✓ Provides 3x greater reduction of enamel solubility³
- ✓ Helps prevent caries and gingivitis with less fluoride (970 ppm F vs 5000 ppm F)
- ✓ Promotes remineralization and inhibits demineralization^{2,3}



Treats sensitivity

Occludes tubules with ACP & Fluoride

Dental hypersensitivity is under-reported by the patient.⁴ Enamelon Treatment Gel is your professionally dispensed solution.

Enamelon® contains stannous fluoride along with calcium and phosphate ions that have proven effective for tubule occlusion. By blocking the exposed tubules with a combination of stannous (tin) ions along with fluoride, calcium and phosphate salts, a physical barrier is created that covers open dentinal tubules to prevent external stimuli from causing pain or discomfort.

Soothes dry mouth tissue

Enamelon provides an immediate and long lasting soothing, moisturizing and lubricating effect.

Through the use of proprietary co-polymers, Hydramulsion™ benefits your patients by providing a long-lasting coating that lubricates and soothes the soft tissues of the mouth.

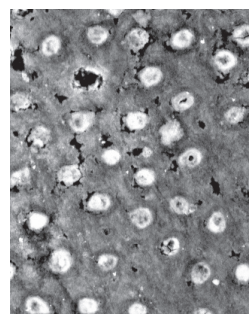
Enamelon is the only stannous fluoride preventive treatment gel that has been shown in a clinical trial to help reduce many sensory symptoms of dry mouth.⁵



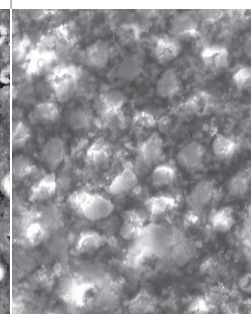
All patients can benefit from Enamelon

Enamelon®	Anti-Caries	Anti-Sensitivity	Anti-Gingivitis
Attrition (Bruxism)		✓	
Caries Risk based on CRA ⁶	✓		
Crown & Bridge Protection	✓	✓	✓
Dental Erosion	✓	✓	
Gastric Reflux Disease GER/GERD	✓	✓	
History of ECC ⁷	✓		
History of Pit & Fissure Caries	✓		
ICDAS Prevention Care ⁸	✓		
Oncology	✓	✓	✓
Orthodontic	✓		✓
Pediatric	✓		✓
Periodontal	✓	✓	✓
Polypharmacy	✓	✓	
Pregnancy/Maternity	✓		✓
Recession	✓	✓	✓
Special Needs Patients	✓	✓	✓
Whitening/Bleaching		✓	
Xerostomia/Dry Mouth	✓	✓	✓

Backscattered Electron Analysis



Secondary Electron Analysis



SEM of the occluded dentinal tubules after day 5 (10 applications) with Enamelon.
10 µm Mag = 1.00 K, XEHT = 20.00 kV

catapult
VOTE OF CONFIDENCE ✓

Dispense with confidence!

“ For patients that have tried a sensitive toothpaste and have not had any relief, we offer the Enamelon Treatment Gel for the generalized sensitivity. For our dry mouth patients, we offer the Enamelon to help aid in the relief to dry mouth tissues, as well as protect them from caries. ”

- Dr. P., DMD & C. B., RDH, BS, Connecticut

9007285 Enamelon® Preventive Treatment Gel
4.0 oz (113 g), Clean Mint, 12/case

Not available in Canada.

1. Enamelon's patented formula contains 0.45% stannous fluoride and amorphous calcium phosphate (ACP) / 2. Schemehorn BR, DiMarino JC, Movahed N. Comparison of the incipient lesion enamel fluoride uptake from various prescription and OTC fluoride toothpastes and gels. J Clin Dent. 2014;25:57-60. / 3. Schemehorn BR, DiMarino JC, Movahed N. Comparison of the Enamel Solubility Reduction from Various Prescription and OTC Fluoride Toothpastes and Gels. Journal of Clinical Dentistry. 2014; 25:61-64. / 4. Kamath Deepa G & Nayak Sangeeta U. Dental hypersensitivity and its management – An informed view, J. Pharm Biomed Sci. 2013, February; 27 (27): 474-479. (Article no 09) / 5. Milleman J.L., Milleman K.R., Santos S.L., Proskin H.M., Battershell K.K., DiMarino J.C.A. Subjective Assessment of Enamelon® Preventive Treatment Gel in A Self-reported Dry-mouth Population. Compend Contin Educ Dent. 2016; 37 (8): E6-E10. / 6. CRA=Caries Risk Assessment curriculum. (ADA, AAPD, CAMBRA, etc) / 7. Early Childhood Caries is defined as the presence of one or more decayed (non-cavitated or cavitated lesions), missing (due to caries) or filled tooth surfaces in any primary tooth in a preschool-age child between birth and 71 months of age. The term "Severe Early Childhood Caries" refers to "atypical" or "progressive" or "acute" or "rampant" patterns of dental caries. – ADA Statement on Early Childhood Caries. www.ada.org/2057.aspx / 8. ICDAS (International Caries Detection and Assessment System) is detection and assessment system classifying states of the caries process. www.icdas.org



Enamelon®

Fluoride Toothpaste

You can count on Enamelon to:

Still suffering from sensitive teeth? What about dry mouth?

Let game-changing Enamelon® come to the rescue!

Did you know that your teeth are exposed to acidic, low pH foods and liquids that demineralize your tooth enamel every day?

Enamelon is the ONLY toothpaste specifically formulated with 2-way protection power to fight back. That's because Stannous Fluoride + a patented remineralizing technology with the components of Amorphous Calcium Phosphate (ACP) help strengthen tooth enamel and are clinically proven to desensitize teeth.¹

What's more, Enamelon's proprietary formula provides double the fluoride uptake of prescription 5,000 ppm fluoride toothpastes⁹ – to harden your tooth enamel. Unlike other brands, Enamelon actually helps seal the tooth surface to prevent sensitivity in the first place!

Enamelon's unique ingredients are also clinically proven to provide relief for dry mouth symptoms.¹⁰ Its Hydramulsion™ long-lasting coating soothes, moisturizes and lubricates dry mouth tissues.¹¹

- ✓ Stop sensitivity in its tracks
- ✓ Strengthen tooth enamel³
- ✓ Soothe and moisturize discomfort associated with dry mouth tissues
- ✓ Help prevent gingivitis & cavities
- ✓ Promote remineralization and inhibits demineralization^{2,3}
- ✓ Provide peace of mind with no SLS, gluten or dyes

9007280 Enamelon® Toothpaste
4.3 oz (122 g)
Mint Breeze, 12/case

Not available in Canada.



The Remineralizing Technology of Amorphous Calcium Phosphate

Amorphous Calcium Phosphate (ACP) -
Building blocks of tooth mineral^{12,13,14,15}



The most reactive and soluble calcium phosphate compound, ACP forms on the tooth enamel, within the dentinal tubules and provides a calcium and phosphate reservoir. Research shows that available ACP on the enamel can prevent damaging erosion by stimulating remineralization of tooth structure.^{16,17,18} Introducing calcium and phosphate back into the surface of the tooth with products containing ACP technology is an ideal strategy to reverse the demineralization process.

The ACP-forming ingredients also strengthen teeth by acting as an enhanced fluoride delivery system to deliver more fluoride than products without ACP.¹⁹ The patient has the benefit of fluoride uptake without greater exposure to higher fluoride concentrations or volumes. ACP combines with fluoride to desensitize dentin. Fluoride, along with ACP, occludes tubules by depositing tooth-like minerals to create a semi-permanent reduction in hydraulic conductance. This is a proven mechanism to reduce dentinal hypersensitivity.

Value of Fluoride Sources

Fluoride reacts with tooth mineral, forming either fluoridated apatite (firmly-bound) or calcium fluoride (loosely-bound).

Firmly-bound fluoride, incorporated onto the surface of the crystals of apatite, can reduce the solubility of tooth mineral and hence inhibit demineralization due to acids generated by plaque bacteria.¹⁶

Loosely-bound (labile F) fluoride provides a relatively slow-release form of ionic fluoride to plaque and saliva.¹⁷ There has been renewed interest in loosely-bound fluoride as a reaction product of fluoridation to act as a potential "reservoir" source of solution fluoride enhancing remineralization and retarding demineralization processes.¹⁷

9. OTC Fluoride Monograph (21CFR Parts 310.355, and 369) and Antigingivitis/Antiplaque Tentative Monograph (21 CFR Part 356). / 10,11. Data on file. / 12. Tung, M.S., Eichmiller, F.C., Paffenbarger Research Center. ADAHF. NIST. Gaithersburg, MD. "Dental Applications of Amorphous Calcium Phosphates" Journal of Clinical Dentistry, Vol.10, Issue 1, 1999. / 13. Tung, M.S., Eichmiller, F.C. "ACP for Tooth Mineralization", Compendium Cont. Educ Dent, Vol 25, No. 9, Suppl. 1, Sept. 2004, p 9-13. Journal Code 9600713, Journal Subset MEDJSD, ISSN 1548-8578. Corp. Author: American Dental Association Foundation. / 14. Tung, M., Eichmiller, F., Gibson, H., Ly, A., Skrtic, D., Schumacher, G., (ADAHF Paffenbarger Research Center, NIST, Gaithersburg, MD), "Dentin Desensitization by in situ Formation of Calcium Phosphate", J. Dent Res 76 (IADR Abstracts):2985, 1997 / 15. Tung, M.S., O'Farrell, T.J., Liu, D.W., Paffenbarger Research Center. ADAHF. NIST. Gaithersburg, MD. "Remineralization by Amorphous Calcium Phosphate Compounds" Journal of Dental Research, Vol. 72, Abstract No. 1738, 1993. / 16. Schemehorn, B.R., Wood, G.D., McHale, W., Winston, A.E., "Comparison of Fluoride Uptake into Tooth Enamel from Two Fluoride Varnishes Containing Different Calcium Phosphate Sources", J Clin Dent, 2011;22:51-54. / 17. White, D.J and Nancollas, G.H. "Physical and Chemical Considerations of the role of firmly and loosely bound fluoride in caries prevention", J Dent Res, 1990, 69:587-594. / 18. Tung, M.S., O'Farrell, T.J., Liu, D.W., Paffenbarger Research Center. ADAHF. NIST. Gaithersburg, MD. "Remineralization by Amorphous Calcium Phosphate Compounds" Journal of Dental Research, Vol. 72, Abstract No. 1738, 1993 / 19. Source: "Final Report: Enamel Fluoride Uptake Study #08-151, Modified FDA Method #40V", Dental Products Testing, Therametric Technologies, Inc., Indiana University Emerging Technologies Center, March 2008

Enamel Pro® Varnish

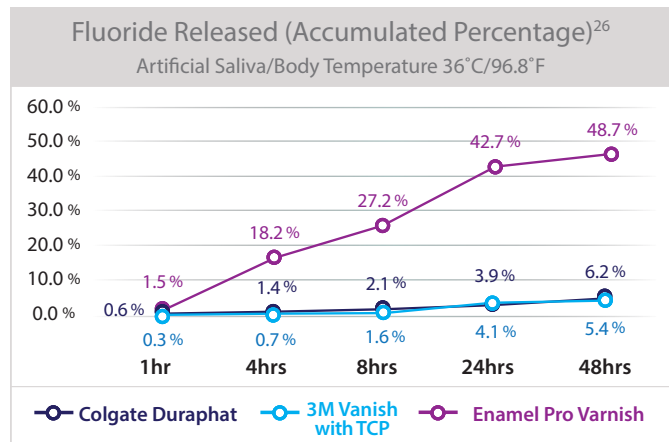
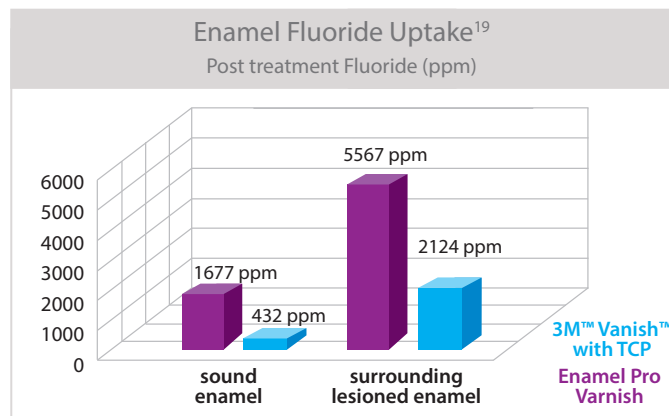
5% Sodium Fluoride Varnish

Varnish Best Practice for Your Practice

All varnishes are not equally effective! Enamel Pro Varnish is the first advanced fluoride varnish optimized to provide beneficial tooth-building ions of calcium and phosphate. Uniquely designed to create substantive forms of CaF_2 and ACP, Enamel Pro Varnish is ideal for reducing dentinal hypersensitivity and post-operative sensitivity. In fact, independent studies show Enamel Pro Varnish delivers more enamel fluoride uptake and greater fluoride release than 3M™ Vanish™.^{17,21} And unlike other varnish, Enamel Pro Varnish is proven to diminish hydraulic conductance by 73%.²⁰

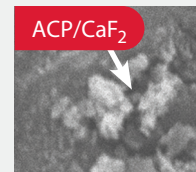
It's time to upgrade your varnish!

- ✓ ACP works together with fluoride to desensitize dentin
- ✓ Provides 4x more fluoride uptake into enamel and greater fluoride release than 3M™ Vanish™^{17,21}
- ✓ Proven to diminish hydraulic conductance by 73% than the leading varnish²¹



In a study evaluating incubation conditions on fluoride release in vitro, Enamel Pro Varnish displayed greater fluoride release than both 3M Vanish and Colgate® Duraphat®.²¹

20. Effect of Calcium Phosphate Containing Fluoride Varnish of Dentin Permeability*, Tung, M.S., Torres, J., (ADAHF Paffenbarger Research Center, NIST, Gaithersburg, MD and U.S. Navy Dental Corps, Bethesda MD), J Dent Res (Spec Iss A): 0985, 2008 (www.dentalresearch.org). / 21. Fluoride Release from Fluoride Varnishes is Affected by Incubation Conditions C. Gonzalez-Cabezas, S.E. Flannagan, R. Krell, M. Uekihara, and C.C. Niquette, Dent Res 91(Spec Iss A):1094, 2012 (www.dentalresearch.org). / *Colgate and Duraphat are not registered trademarks of Premier Dental Products Company. / **3M and Vanish are not trademarks of Premier Dental Products Company. / 22. Winston, A.E., Charig, A., Patel, V., McHale, W.A. and Malerman, R. "Effect of Prophylaxis Pastes on Surface of Tooth Enamel", Journal of Dental Research, Vol. 84, Special Issue A, IADR Abstracts, 2005.



Amorphous calcium phosphate and calcium-fluoride mineral on dentin surface and in tubules

Indications for Use

Enamel Pro® Varnish is a fluoride containing preparation for the treatment of dentinal hypersensitivity, and for the reduction of post operative sensitivity.

5% NaF Varnish

Box of 35

- 9007540 Strawberries 'n Cream 0.40ml
- 9007541 Bubblegum 0.40ml
- 9007547 VanillaMint 0.40ml
- 9007542 Bubblegum 0.25ml

Box of 200

- 9007543 Strawberries 'n Cream 0.40ml
- 9007544 Bubblegum 0.40ml
- 9007545 VanillaMint 0.40ml

Each box contains single-unit doses and an applicator brush, post-application patient care instructions and doctor's directions for use.

VanillaMint is not available in Canada.



Enamel Pro®

Prophy Paste

Get Dual Action Power with Enamel Pro

Removes stains & repairs enamel²³

Enamel Pro with Dual Action Power is different. It's the only prophy paste that effectively removes stains and repairs enamel via its unique formulation with ACP (amorphous calcium phosphate) technology, which delivers 31% more fluoride uptake to help repair the tooth surface²⁷ for brighter, whiter smiles.



- ✓ Effective stain removal – *superior polish for brighter, whiter, more lustrous smiles^{24,25}*
- ✓ Delivers amorphous calcium phosphate (ACP) – *helps repair enamel through fluoride uptake*
- ✓ Minimizes splatter & easy to rinse – *safely leaves teeth clean & smooth*
- ✓ Fun swirls & great flavors – *for happy patients*

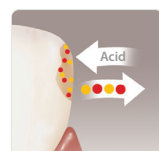
	Fine	Medium	Coarse
Mint**	9007600	9007601	9007602
VanillaMint	9007617	9007618	9007619
Bubblegum	9007614	9007615	9007616
Cinnamon	9007604	9007605	9007606
Strawberry	9007607	9007608	9007609
Mixed Berry	9007630	9007627	9007631
Grape	9007610	9007611	9007612
RaspberryMint	9007620	9007621	9007622
Mint (no fluoride)			9007613

**Also available in Mint Extra Coarse 9007603

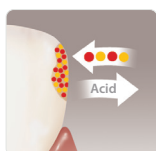


Each box of Enamel Pro® contains 200 single-use cups, packaged in a foil bag and a Comfy-Grip™ prophy cup holder.

9007650 Comfy-grip™ cup holder (3)



Demineralization



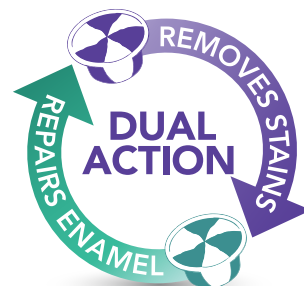
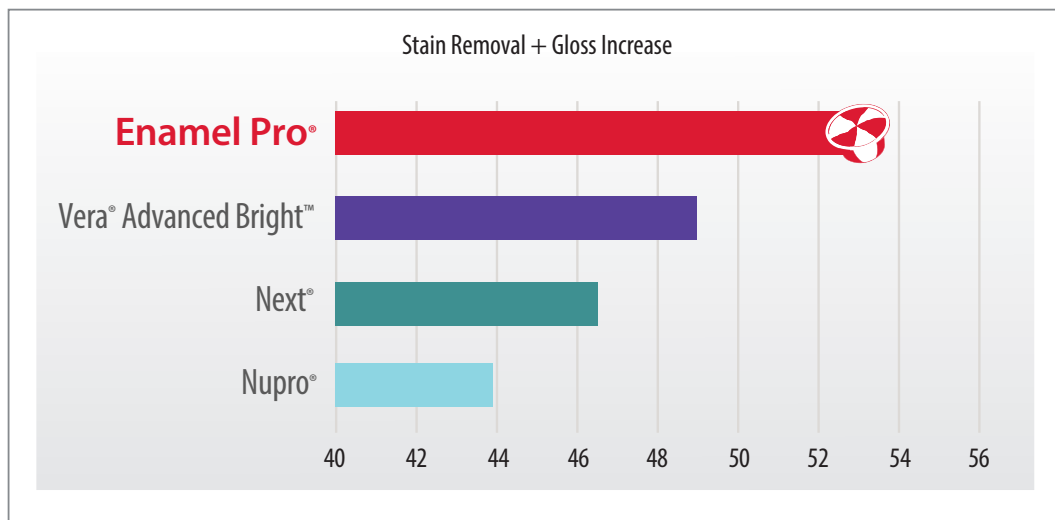
Rapid Remineralization

● Calcium
● Phosphate



23. A Dental Products Testing study on fluoride shows that Enamel Pro provides 31% greater fluoride uptake into the enamel than pastes without ACP. / 24,25. Data on file.

THE RESULTS ARE IN: Enamel Pro® outshines the competition.

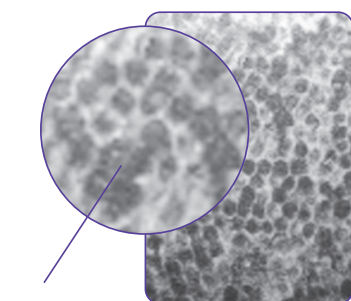


Testing conducted by Therametric Technologies, Inc., an independent, 3rd-party lab based in Noblesville, IN. Each bar represents the change in teeth color (due to stain removal as measured by ΔE) and change in gloss (due to change in surface luster resulting from polishing). The results are shown as absolute values (not normalized). *Vera® is a registered trademark and Advanced Brite™ is a trademark of Young Dental Manufacturing, LLC, Next® is a registered trademark of Preventive Technologies, Inc., Nupro® is a registered trademark of Dentsply Sirona, Inc.



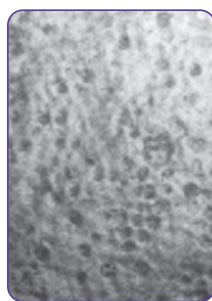
Greater luster for whiter, brighter teeth^{15,22}

Zygo® non-contact profilometry intensity map profiles

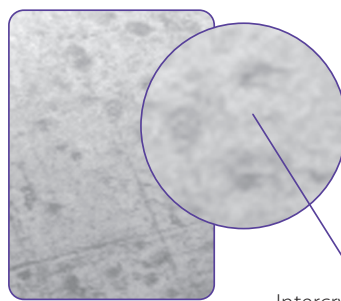


Prisms

Enamel surface
before prophylaxis



After prophylaxis
polishing with
leading prophylaxis paste



After prophylaxis
polishing with
Enamel Pro®

Intercrystalline
spaces between
the prisms have
been filled in for
an intense polish
and shine

Glitter®

Prophy Paste

Glitter® prophyllaxis paste delivers effective stain removal at a fair price. Its smooth, pliable and splatter-free paste cleans teeth quickly and effectively. Best of all, Glitter leaves your patients with the great, clean smiles they desire.

Professional polishing at a fair price!

- ✓ Delivers effective stain removal – *for a whiter smile*
- ✓ Cleans teeth quickly and effectively – *easy to rinse off*
- ✓ Smooth, pliable and splatter-free – *great for you and your patients*

	Fine	Medium	Coarse
Mint**	9007400	9007402	9007404
Cherry		9007412	9007414
Strawberry	9007420	9007422	9007424
Bubble Gum	9007430	9007432	
Mint (no fluoride)		9007442	9007440

**Also available in Mint Extra Coarse 9007406



Tastytooth™

5% Sodium Fluoride Varnish

Tastytooth™ – our name says it all!

Delight your patients with an affordable great tasting varnish made from a blend of xylitol and sucralose. The silky smooth formula is easy to apply, has high-impact flavors and is gluten-free. Every time.

You'll love the price, they'll love the taste!

- ✓ Great flavors
- ✓ Affordably designed
- ✓ Impressive application properties

Contents: 100 (0.5mL) single-dose,
100 applicator brushes and Directions for Use.

9007580 Caramel
9007581 Melon
9007582 Bubblegum

Post-treatment patient care instructions are available
for download at premierdentalco.com



Not available in Canada.

2pro®

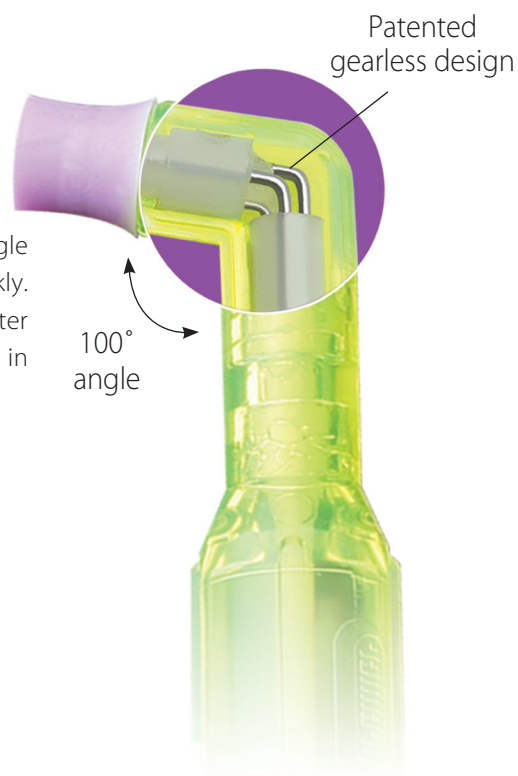
Total Access Disposable Propphy Angle

Twice the efficiency.

Get a 2-fer with 2pro!

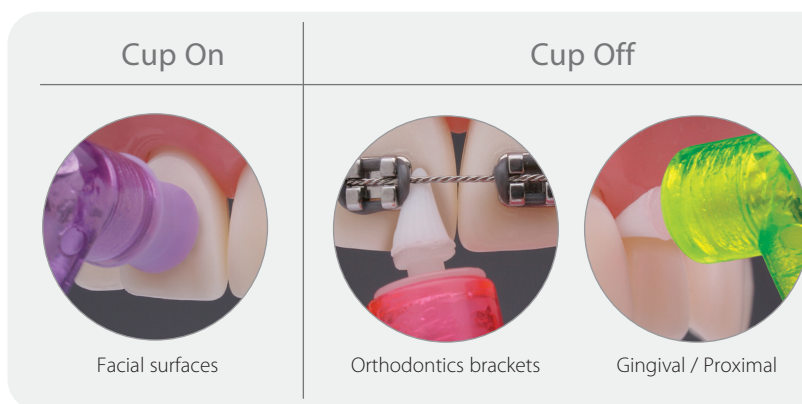
Award-winning 2pro is the uber-efficient 2-in-1 disposable propphy angle that helps you easily access hard-to-reach areas of the mouth quickly. One cup. One tip. No extra cost or time to switch. Which means a better cleaning experience, happier patients and less chair time! 2pro is your all in one polishing angle.

- ✓ Patented gearless, jam-free design – *quiet, smooth polishing*
- ✓ Angled neck for easier total access – *makes hard-to-clean areas a breeze*
- ✓ Advanced 2-in-1 design – *saves time, improves workflow*
- ✓ Convenient access tip – *efficiently cleans around ortho bracket*



	Bag of 144	Bulk Package (1,000 angles)
Soft/Short Cup (purple cup)	5500101	5510001
Firm/Short Cup (blue cup)	5500102	5510002
Soft/Long Cup (white cup)	5500103	5510003
Firm/Long Cup (green cup)	5500104	5510004

Order through your authorized dealer.



Perfecta® REV!®

14% Hydrogen Peroxide

Zero to White in 15 minutes

Perfecta REV!® is a breakthrough in take-home tooth whitening! Help your patients get an affordable, professional strength, high-percentage H₂O₂ gel that whitens teeth with just 15 minutes of daily wear time. REV!'s patented water-based gel hydrates as it whitens so no need to worry about sensitivity or time-consuming 'solutions' that often leave non-compliant patients with disappointing results. And Perfecta REV!'s fresh mint rinse with Vitamin C boosts the whitening effect even more—without gimmicks like light or heat.

✓ Powerful Whitening Gel

- 14% Hydrogen Peroxide – *55% higher concentration than the leading brand*
- 15-minute daily wear time – *Just half the time of other take-home systems*
- Patented gel hydrates teeth as it whitens – *66% less sensitivity than the leading strips*^{26,27}

✓ Refreshing Finishing Rinse

- Provides boost to whitening effect – *activates residual hydrogen peroxide ions*
- Formulated with vitamin C – *promotes healthy gums after treatment*
- Clean & fresh cool mint feeling – *patients love it!*

4000142 REV! Six Patient Paks

Each Patient Pak is a complete 2-week treatment. Contains 2 - 3cc syringes with 4oz (118.3ml) REV! finishing rinse. You add trays and tray cases.

4000141 REV! Six Refresher Paks

Ideal for touch-ups. Contains 1 - 3cc syringe with 4oz (118.3ml) REV! finishing rinse. You add trays and tray cases.

Available individually through dealer. Not available in Canada.

26. Clinical Evaluation of Bleaching Efficacy of Two Different Systems, Sheila Koh, D.D.S., F.A.G.D. University of Texas Health Science Center at Houston - Dental Branch, December 2004. / 27. Crest® Whitestrips® Supreme



Perfecta® Bravó®

9% Hydrogen Peroxide

Only 30 minutes, once a day!

Patented water-based formulation hydrates teeth as they whiten to avoid sensitivity.

4000094 Bravó 50 Pak

Contains 50 - 3cc syringes. You add trays and tray cases.

Not available in Canada.



Perfecta®

Carbamide Peroxide

Perfecta® carbamide peroxide gels are formulated with a predominantly glycol base for minimal dehydration and sensitivity.

Perfecta 16%

Can remove a full range of stains including those resulting from tobacco, dark beverages and even tetracycline. Wear time can be adjusted for light stains and for those patients with a history of thermal sensitivity.

Perfecta 21%

Tetracycline stains, fluorosis. Dispense only to compliant patients with no history of thermal sensitivity.

Perfecta 50 Pak

Contains 50 - 3cc syringes with dispensing tips, 8 patient instructions, 25 prescription bags, doctor's instructions.

	Unflavored	Mint
16%	4004160	4004165
21%	4004210	4004215

Accessories

4008311	Tray Cases (24 Pearl White)
4008305	.040" Tray Material, 5 x 5" (25)
4008300	Perfecta Block-Out Resin

Standard Tubes 2-arch supply per tube

A tremendous value with 2 ounces (59cc) of whitening gel in a squeeze tube. Ideal for long-term cases (tetracycline).

4007115	11% Standard Tube	(Mint)
4007165	16% Standard Tube	(Mint)
4007215	21% Standard Tube	(Mint)

Not available in Canada.

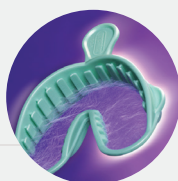


ALFA™ Triple Tray®

Full-arch Alginate Impression Making

Ideal for whitening trays - one step, two impressions!

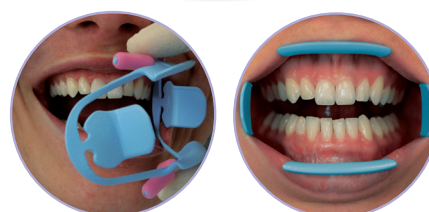
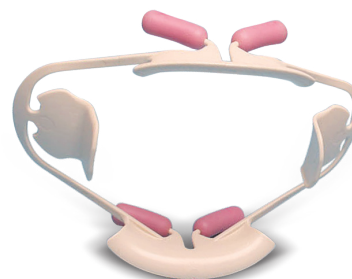
Box of 24	Small	1006313	Large	1006333
	Medium	1006323	Assorted	1006343



ComfortView® Lip & Cheek Retractor

- ✓ Retracts lips and cheeks for optimal buccal and gingival access
- ✓ Maximum visibility and patient comfort
- ✓ Suitable for use in diagnostic, preventative, therapeutic dental applications, in-office whitening, digital impression scanning and intra-oral photography
- ✓ Autoclavable, latex free

9061381	Universal ComfortView Lip and Cheek Retractor - 2 per box (white)
9061383	Small ComfortView Lip and Cheek Retractor - 2 per box (blue)
9061382	ComfortView Refill Cushions -10 per pack



PremierAir®

PremierAir® & Big Easy® Ultralite™ Scalars and Curettes

Now... Even Better Handles, Better Tips, Better Value!

Feel the Difference. Experience the Quality.

- ✓ Ergonomic, lightweight, tactile resin handles - *less hand & wrist fatigue*
- ✓ Heat-treated, cryo-hardened edges stay sharp longer - *helps remove calculus easily*
- ✓ And speaking of sharp, we've sharpened our pencils - *priced at an exceptional value!*



Stays Sharp Longer



Ergonomic/Lightweight



Exceptional Value



View the complete line of
instruments at premierdentalco.com

Sickle



Big Easy®
Ultralite™ (BEUL)
1/2" diam., 16g



PremierAir®
Scalers & Currettes
15g

204 Series



**Big Easy®
Ultralite™ (BEUL)**
1/2" diam., 16g



PremierAir®
Scalers & Curettes
1/2" diam., 15g



204 S • BEUL-05623 • PremierAir-1004696



Jacquette 34-35 • BEUL-05645 • PremierAir-1004686



H-204 S • BEUL-05625 • PremierAir-1004687



H-204 SD DISTAL • BEUL-05627 • PremierAir-1004697

Columbia



Columbia 13/14 • BEUL-05617 • PremierAir-1004652



Columbia 4L/4R • BEUL-05615 • PremierAir-1004651

Younger-Good



H Younger-Good 7/8 • BEUL-05693

McCall



Barnhart



**Big Easy®
Ultralite™ (BEUL)**
1/2" diam., 16g



PremierAir®
Scalers & Curettes
15g

Gracey	BEUL PS	BEUL MPS
1/2	05660	05670
3/4	05661	05671
5/6	05662	05672
7/8	05663	05673
9/10	—	—
11/12	05665	05675
11/14	—	—
12/13	—	—
13/14	05666	05676
15/16	05667	05677
17/18	—	—

Gracey Variations Big Easy Ultralite

Pocket Scalers (PS) and Mini Pocket Scalers (MPS) have a slender and longer terminal shank to provide access into deeper pockets. MPS has the same slender tip design as PS, but with half the blade length.



BEUL PS

BEUL MPS

Gracey



**Big Easy®
Ultralite™ (BEUL)**
1/2" diam., 16g



PremierAir®
Scalers & Curettes
1/2" diam., 15g



Gracey 1/2 • BEUL-05601 • PremierAir-1004660
Short shank for incisors and cuspids



Gracey 3/4 • BEUL-05603 • PremierAir-1004661
Short contra-angle shank for incisors and cuspids



Gracey 5/6 • BEUL-05605 • PremierAir-1004662
Medium shank for cuspids and molars



Gracey 7/8 • BEUL-05607 • PremierAir-1004663
Medium contra-angle shank for bicusps and molars, buccal and lingual surfaces



Gracey 9/10 • BEUL-05609
Long contra-angled for molars with more acute blade angle



Gracey 11/12 • BEUL-05611 • PremierAir-1004665
Triple angulation for easy access to buccal/mesial and lingual/mesial surfaces of premolars and molars



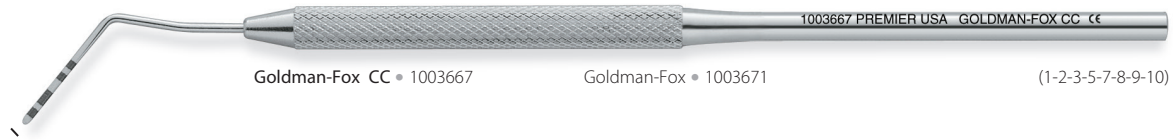
Gracey 13/14 • BEUL-05613 • PremierAir-1004666
Triple angulation for easy access to distal/posterior surfaces of premolars and molars



Gracey 15/16 • BEUL-05653
Angled shank, designed to reach mesial surfaces of posterior teeth

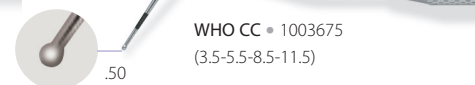
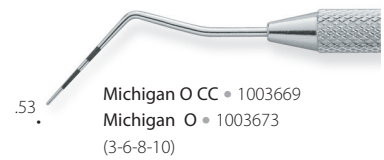
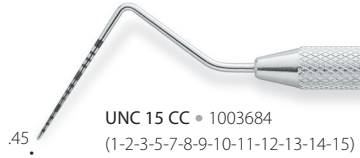


Gracey 17/18 • BEUL-05655
Highly angled shank for reaching distal surfaces of posterior teeth

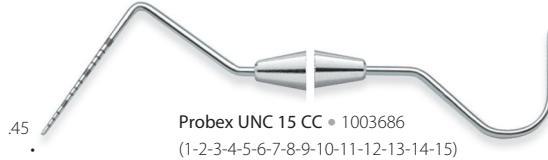
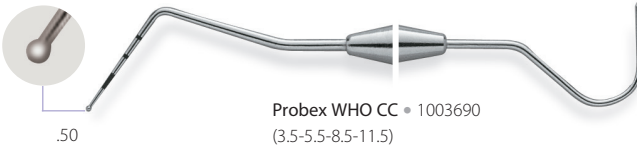
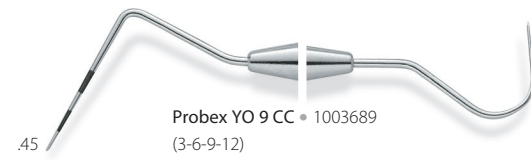
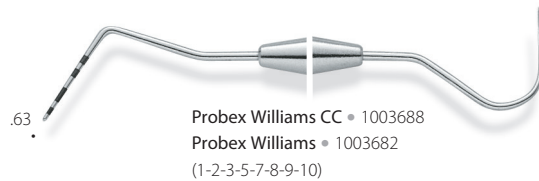
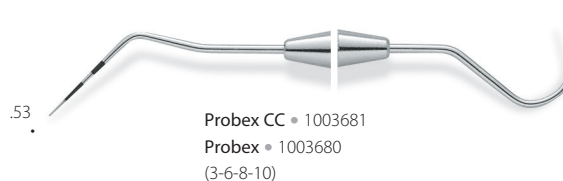
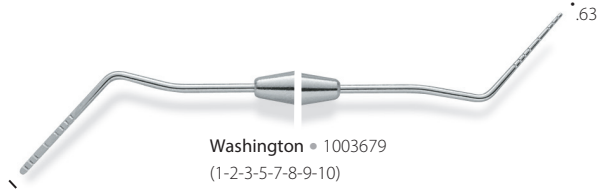
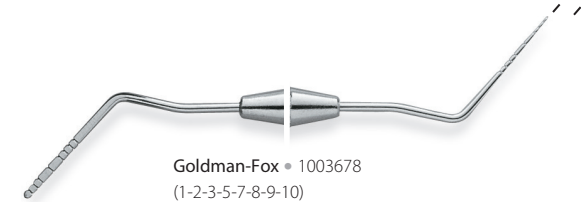


Goldman-Fox • 1003671

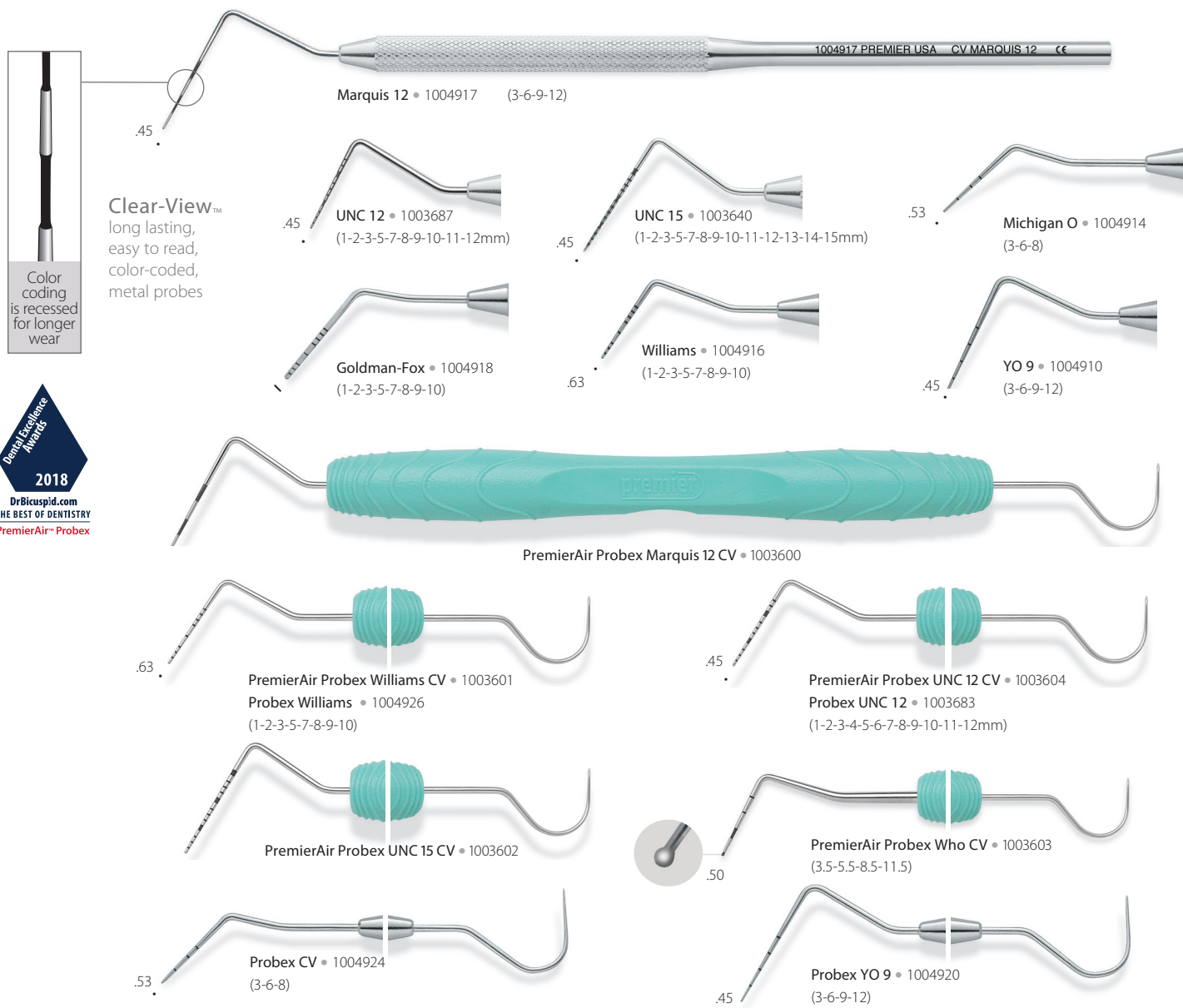
(1-2-3-5-7-8-9-10)

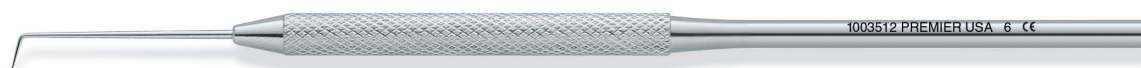


Nabers 2N • 1003677



Tip diameter measurements in millimeters. CC indicates color coding.





CF 6 • 1003512

CF 6XT • 1003116

OCT 6 • 1003492



CF 6L • 1003513



CF 6L-H • 1003511



CF 17 • 1003514



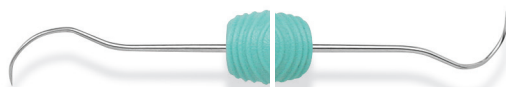
CF 23 • 1003515
CF 23 12-PK • 1003962
CF 23XT • 1003118
OCT 23 • 1003495

Cavity Finder™ Explorer

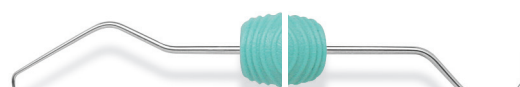
- Improved tactile sensitivity via multi-piece construction
- Thin, yet sharp and durable tips



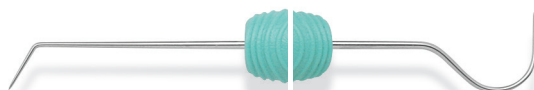
PremierAir CF 2 • 1003564 CF 2 • 1003522 CF 2XT • 1003119 OCT 2 • 1003502
CF 2 12-PK • 1003963



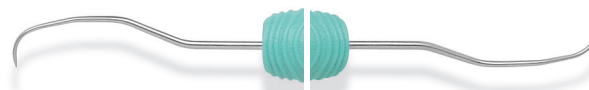
PremierAir CH3 • 1003563
CF 3CH • 1003527



PremierAir CF 5 • 1003560
CF 5 • 1003523 CF 5 12-PK • 1003964
CF 5XT • 1003120 OCT 5 • 1003503



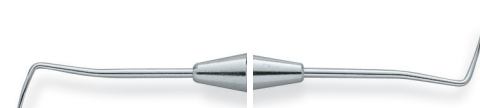
PremierAir CF 6/23 • 1003565
CF 6/23 • 1003526 OCT 6/23 • 1003506



PremierAir OD 11/12 • 1003562
CF ODH 11/12 • 1003549



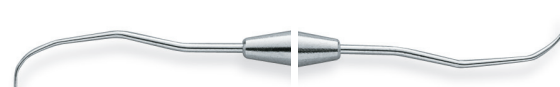
PremierAir TU 17/23 • 1003566
CF TU 17/23 • 1003509



CF 2CH • 1003528

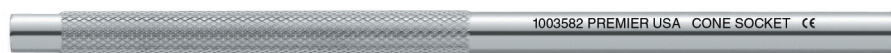


CF 6 • 1003524

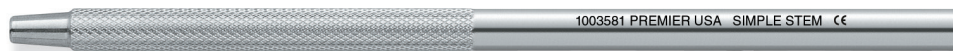


CF 11/12 • 1003529

Mirror Handles



Cone Socket • 1003582



Simple Stem • 1003581

Big Easy® Ultrasonic Inserts

Big Easy cushion-grip ultrasonic inserts for improved ergonomic grip and comfort.

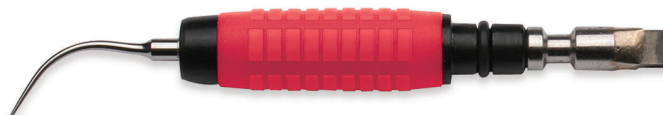
- Ergonomically designed large 7/16" diameter for maximum comfort and decreased fatigue
- Compatible with most magnetostrictive handpieces



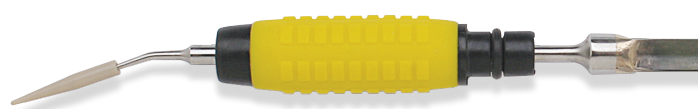
Big Easy Ultrasonic Inserts - #10 Universal • 25K-1005300 • 30K-1005310



Big Easy Ultrasonic Inserts - #1000 Triple Bend • 25K-1005305 • 30K-1005315



Big Easy Ultrasonic Inserts - #100 Thin-tip • 25K-1005320 • 30K-1005330



Big Easy Implant Ultrasonic Inserts • 30K-1005336

- Permanently attached PEEK tip will not scratch implants
- PEEK is considered an advanced biomaterial used in medical implants
- PEEK is non-abrasive and proven robust for long-lasting insert tips
- Effectively removes biofilm and calculus



Resin Handle Ultrasonic Insert - #10 Universal • 25K-1006800 • 30K-1006900



Resin Handle Ultrasonic Insert - #1000 Triple Bend • 25K-1006802 • 30K-1006901



Resin Handle Ultrasonic Insert - #100 Thin-tip • 25K-1006820 • 30K-1006920

Premier PerioWise® "The Friendly Probe"™

- ✓ Slightly flexible for greater patient comfort
- ✓ Clearly visible when using intra-oral camera



Original 3-5-7-10mm

• 9006107 (3-pack)

• 9006102 (6-pack)

• 9006105 (12-pack)

"Most Highly
Rated"*



3-6-9-12mm

• 9006108 (3-pack)

• 9006104 (6-pack)

• 9006106 (12-pack)

* An independent non-profit dental education and product testing foundation - January 2001. / **: "A Patient-Centered Approach to Periodontal Disease Detection." JOURNAL OF PRACTICAL HYGIENE; Vol. 8, Number 3; May/June 1999.

Premier PerioWise® UNC12 "The Friendly Probe"™

- ✓ Provides precision measuring of pocket depths with markings indicating 1mm increments up to 12mm
- ✓ Ideal for complete periodontal examinations and intraoral measurements

1mm increments
up to 12mm



UNC 12

• 9006120 (3-pack)

• 9006121 (6-pack)

• 9006122 (12-pack)

Implant Scalers

- ✓ Thin, slightly flexible and safe for use on implants
- ✓ Autoclavable (273°F/134°C)



Universal (Columbia 4L/4R)

2 pack • 9061401
5 pack • 9061400



Facial (Goldman-Fox 5)

2 pack • 9061402
5 pack • 9061403



137 Anterior

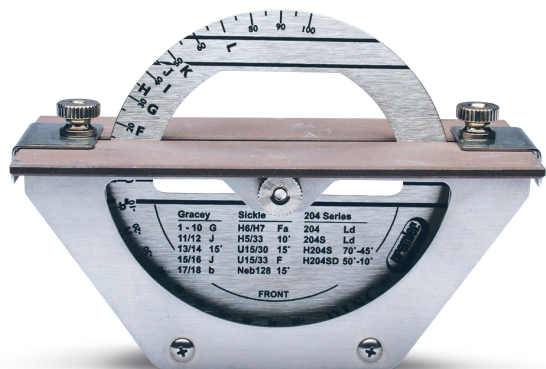
2 pack • 9061421
5 pack • 9061420



204 Posterior

2 pack • 9061423
5 pack • 9061422

The Cutting Edge in Precision Sharpening

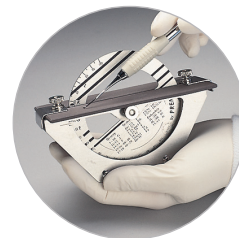


Autoclavable D.I.S.C.™ Instrument Sharpening System

- ✓ Simplifies sharpening
- ✓ Easy-to-use
- ✓ Quick and accurate
- ✓ No damage to cutting surface

9048200 Autoclavable D.I.S.C. complete with (2)
sharpening stones and Comprehensive
Guide to Sharpening

9048093 Sharpening Stone (1)



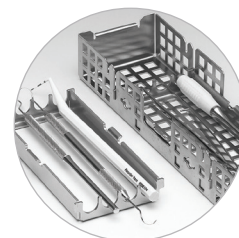
To view the D.I.S.C. tutorial, go to premierdentalco.com



Instrument Cassettes Stainless Steel

- ✓ Proven reliability & quality performance
- ✓ Unique, hingeless design
- ✓ Compact, double-stack feature

9010904 Mark I (4 or 8 instruments)
9010908 Mark VI (8 or 16 instruments)
9010924 Mark IV (12 or 24 instruments)
9010901 Accessory Cassette



new! BioGREEN™ Micro-Applicators

Bendable. Economical. Eco-Friendly.

Take a positive step for the environment today with Premier's new BioGREEN™ micro-applicators. They are the smart, environmentally friendly alternative to traditional plastic micro-applicators. Made from a food production straw-byproduct, BioGREEN micro-applicators are biodegradable and compostable. Because they are made from renewable and sustainable materials, you can feel good knowing they help to reduce CO2 through the plants used to make them. So go ahead and make a positive difference with BioGREEN micro-applicators and get the job done for all your micro-application needs.

- ✓ Available in regular, fine and super-fine sizes
- ✓ Eco-Friendly 4 Ways!
 - Biodegradable & compostable
 - Recyclable packaging made from sustainable materials
 - Requires less energy to produce vs. petroleum plastics
 - Source plants reduce CO2 (greenhouse gasses) through photosynthesis
- ✓ Gluten-free & Lint-free brush tips

3005100 Regular (green)

3005101 Fine (blue)

3005102 Super-Fine (yellow)

Contents 100 micro-applicators



Vac Attak™ GREEN

Safe, Effective and EPA-Compliant Evacuation System Cleaner

Vac Attak™ GREEN is a high-performance evacuation system cleaner designed to comply with the EPA's 2020 Clean Water Act. Using a combination of powerful enzymes with powerful surfactant chemistry that gets the job done, Vac Attak GREEN's environmentally-friendly formula meets the ADA's best management practices.

With a neutral pH, its non-foaming and non-corrosive formula has no chlorine or oxidizing agents.

Safe and gentle for every day use with all amalgam separators, this evacuation system cleaner is still Vac Attak-tough to clean your lines of bio-burden, prophyl paste and fluoride gels.

- ✓ Powerful enzymatic, EPA-compliant cleaner
- ✓ Compatible with amalgam separators
 - pH neutral
 - No chlorine
 - No oxidizing agents
 - Non-foaming
 - Non-corrosive
- ✓ Up to 80 cleanings per jar
- ✓ Economical and easy-to-use powder
- ✓ Fresh citrus scent

9011105 Six, 800g jars with scoop dispenser

Individual jars available through dealer.



Brite Shield™

Instrument Cleaner and Protectant

- ✓ Static soak and ultrasonic cleaner
- ✓ Removes glass ionomer, carboxylate, zinc phosphate cements and bio-burden
- ✓ Unique passivation process coats instruments restricting rust and corrosion
- ✓ Removes alginate and stone from impression trays
- ✓ Economical and easy to use. One jar makes up to 34 gallons
- ✓ Environmentally friendly

9011100 Six, 800g jars with scoop dispenser

Individual jars available through dealer.



Vac Attak™

Evacuation System Cleaner

- ✓ Especially effective on prophylaxis paste and fluoride gels
- ✓ Fast-acting
- ✓ Environmentally friendly
- ✓ Economical and easy to use
- ✓ Up to 100 cleanings per 800g jar

9011101 Six, 800g jars with scoop dispenser

Individual jars available through dealer.

Pro Clean™

Professional Strength Tartar and Stain Remover
for Dentures, Partial, Retainers and Night Guards

- ✓ Extremely effective cleaner
- ✓ Environmentally friendly
- ✓ Easy to mix and use during patient's prophylaxis or dispense for patient home use

9011103 Box of 25 packets

9011102 Case of 10 boxes - (25 packets/box)



Sleeve-It™

Disposable Barrier Sleeves
Help Prevent Cross-Contamination

Premier's Sleeve-It™ disposable barrier sleeves provide proven protection against cross-contamination. Made from high-grade durable material, Sleeve-It barriers have passed extensive testing²⁹ to ensure patient safety.

Easy to use, Sleeve-It barriers slide over syringe and cartridge dispensers and feature a pre-cut opening to pass through the dispensing tip.

Ideal for multiple-use dispensers that cannot be reprocessed using heat-sterilized or high-level disinfectants, Sleeve-It barriers can be conveniently used for each new patient per FDA, CDC and OSHA recommendations³⁰.

- ✓ Proven barrier protection for multiple-use dispensers
- ✓ Protection against cross-contamination.
- ✓ Passed extensive testing²⁹ to ensure patient safety.
- ✓ Easy to use

9011501 100 Series - Fits 0.7 - 3.0ml syringe
Contains: 300 disposable barrier sleeves

9011503 200 Series - Fits 5ml dual-barrel syringe
Contains: 300 disposable barrier sleeves

*Perfect for
BioCoat®!
See page 3.*



100 SERIES 9011501 100 series
(Fits 0.7 - 3.0ml syringe)



200 SERIES 9011503 200 series
(Fits 5ml dual-barrel syringe)

29. Viral penetration: ASTM F 1671 Synthetic blood penetration: ASTM F 1670 Resistance to puncture: ASTM F 1342. Tear resistance: ASTM D 1004. Tensile testing: ASTM D 882. Biocompatibility: ISO 10993-5, ISO 10993-10, ISO 10993-12. / 30. <https://www.fda.gov/medicaldevices/productsandmedicalprocedures/dentalproducts>



Topicale®

Topical Anesthetic Gel Pumps

- ✓ Easy dispensing; minimizes waste
- ✓ 10-second onset
- ✓ 18% Benzocaine

1.51oz pumps (43g) 3 pumps per pkg

9007140 Assorted
(Cherry, Raspberry, Pina Colada)
9007141 Cherry
9007142 Raspberry
9007143 Strawberry
9007144 Pina Colada

Not available in Canada.



Topicale® Gel Jar

- ✓ 18% benzocaine formulation
- ✓ Use on areas of injection and/or prior to scaling and curettage to alleviate patient discomfort
- ✓ Tropical fruit flavored
- ✓ 25% more material than 1oz jars

9007161 Gel - 35g / 1.25oz jar
Not available in Canada.



Topicale® Xtra

Oral Anesthetic Gel

- ✓ Three fun flavors, with no bitter after-taste
- ✓ 20% Benzocaine formulation for rapid 10-second onset of surface anesthesia of soft tissue
- ✓ Economical 1oz jar (28.35g)

9007152 Very Berry Cherry
9007153 Mint Freeze
9007154 Jammin' Strawberry
9007155 Assorted package of 3

Not available in Canada.



Topicale® Ointment

Unique water-soluble base releases active ingredients on contact; permits onset of anesthesia in less than 20 seconds! Provides deeper surface anesthesia.

Orange raspberry flavor

- ✓ 18% benzocaine formulation

9007151 Ointment - 35g jar
Not available in Canada.



Prior to Injection



Oral Ulcers/Irritations

Topicale® GelPatch™

Once placed in the mouth, Topicale GelPatch dissolves gradually - releasing benzocaine to anesthetize surface tissue for up to 20 minutes. Ideal for denture sores, prior to injection and oral ulcer/irritations - appropriate for patient home use. Fast acting

- ✓ Self-dissolving
- ✓ Flexible

9007149 GelPatch - (25) Mint
Not available in Canada.



Topicale and Topicale Xtra are Gluten-free. Not available in Canada.





premierdentalco.com/promise

We'll go the extra mile, every time.

We promise to:



Make it easy to do business with us



Provide innovative, standard-setting solutions



Be your Product Concierge – for knowledge and service



Make it right if we fall short

premier® Inspired solutions
for daily dentistry®

Premier® Dental Products Company • 1710 Romano Drive, Plymouth Meeting, PA 19462, USA
Phone 888-670-6100 • 610-239-6000 • Fax 610-239-6171 • premierdentalco.com • E-mail: info@premierdentalco.com

8610402 0522045 Rev38 NKP15M