

# A New Era of Dentistry, KaVo Electrics.

## Premium Electric Handpieces Featuring a Triple-Gear System

Featuring MASTERmatic™ LUX M25L and MASTERmatic LUX M05 L Mini High-speeds with KaVo's smallest head size yet on an electric attachment. The Master Series premium electric handpieces feature a triple-gear system for smooth, reliable operation and patented angles for superior access.



### **Smaller Head Size**

For easy, efficient access to the preparation area.



### **KaVo push-button chuck system**

With a retention power of up to 30 N for secure retention of the bur.



### **Low volume – only 55 dB(A)**

To eliminate unpleasant noises for patients and treatment personnel



### **Optimum access**

Thanks to the patented 100°/19° head/knee angle combination.



### **Triple-gear technology**

For ultra-smooth operation with minimal vibration.









### **Plasmatec™ coating**

For a perfect grip and excellent hygiene.



# MASTERmatic™ Attachments

						
<b>MASTERmatic</b>	<b>M25 L</b>	<b>M05 L</b>	<b>M20 L</b>	<b>M07 L</b>	<b>M29 L</b>	<b>M10 L</b>
<b>MASTERmatic version</b>	High-speed Attachment	Mini High-speed Attachment	Low-speed Contra-angle	Low-speed Contra-angle	Low-speed Contra-angle	Straight Attachment
<b>Transmission type</b>	Speed Increasing 1:5	Speed Increasing 1:5	1:1	Reduction 2.7:1	Reduction 7.4:1	1:1
<b>Part no.</b>	1009.3630	1009.3640	1009.3620	1009.3610	1009.3580	1009.3570

Suitable for the following  
KaVo Electrics System



**ELECTromatic Premium with KL703 motor and ENDO function standard tube (69 inch)**

Part no. 1012.8545 – 1 x KL703

Part no. 1012.8547 – 2 x KL703

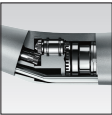
## PRODUCT FEATURES AND BENEFITS

Innovative features of the MASTERmatic allow you to achieve the best results in all treatment situations due to improved visibility, optimum access, maximum precision, and exceptional reliability.



### Smaller Head Size

The MASTERmatic M25 L features a 20% smaller head than its predecessor, the GENTLEpower 25LPR. The smaller head size allows for increased visibility of the preparation area.



### Triple Gear Technology

The MASTERmatic M25 L features a unique, precise triple-gear system that distributes motor power evenly between three gears instead of two. This gear system delivers quiet, smooth, vibration-free operation to extend handpiece life and reduce repair costs. The smooth operation allows for more precise prep and better clinical results.



### Angle of Access

The MASTERmatic M25 L features improved head and knee angle for superior access especially in the molar region (100° head angle and 19° knee design). Compare to competitors 90°/18° head and knee angle combination and see the KaVo difference.



### KaVo Chuck System

Unique carbide chuck system provides strong bur gripping at 30 N for increased bur concentricity, precise cutting, durability and safety.



### Plasmatec Coating

The Plasmatec coating on all MASTERmatic instruments ensures a secure grip which allows a better tactile feeling and reduced fatigue during long treatments. There is no need to apply additional pressure to prevent the handpiece from slipping due to this exclusive coating.

