

**DIRECTA**  
**ceramir**<sup>®</sup>  
Pediatric Crown



Preserve More, Adjust Less



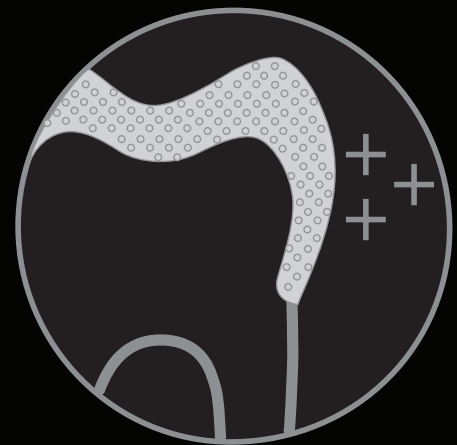
Nature inspired innovation  
with predictable and reliable results.

## Ceramir Pediatric Crowns set a new standard in restorative dentistry for children.

A patented laser sintering technology allows the creation of a unique material that mimics the characteristics, aesthetics, and anatomy of a natural tooth.

Ceramir Pediatric Crowns are designed to allow you to work with a minimally invasive strategy, preserving as much dentine as possible.

They provide a simple and fast workflow to improve the overall treatment experience for the child. In addition, Ceramir Pediatric Crowns are biocompatible, bisphenol A free and non-toxic.



Patented laser sintering technology creates a unique combination of strength, flexibility and aesthetics



Bisphenol A free  
and non-toxic







Minimally invasive



Reduced  
chairside time



Permanent natural appearance



Easy to adjust and repair  
in the mouth



# Easy to Use and Patient Friendly

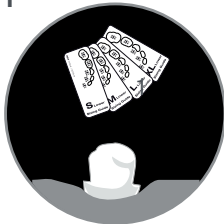
## Effective Workflow

Ceramir Pediatric Crowns are prefabricated with a design mimicking the anatomy of primary teeth. The crowns come in many sizes and are easily seated with a light-curing composite.

The crown can be adapted to the preparation design and can easily be converted to a partial crown. The simple workflow of Ceramir Pediatric Crowns allows for minimal tooth preparation, a fast and safe treatment reducing chairside time and improving the overall treatment experience for the child.

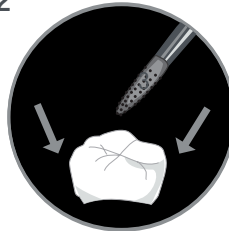
## Ceramir Pediatric Crowns in 3 Simple Steps

1



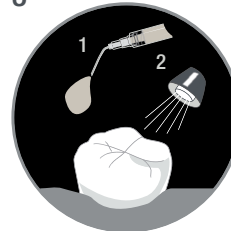
Select crown size  
with sizing guide set

2



Adjust crown  
(Margins, approximal  
contacts mesial/distal)

3

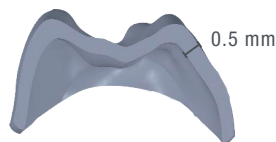
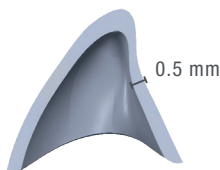


Cement crown



## Minimally Invasive, Adjustable and Easy to fit.

Ceramir Pediatric Crowns require minimal or no tooth preparation, preserving more of the tooth. The preparation design depends on the extent of caries removal, with a margin thickness of only 0.5 mm, compared to 1.0 mm or more for other pediatric crowns.



Ceramir Pediatric Crowns can be easily adjusted to fit each patient. High occlusal points can be managed without cutting the opposing tooth, and the crowns can be converted to partial crowns if needed.



## Repairability

If needed Ceramir Pediatric Crowns can be easily repaired in the mouth with a light curing composite.



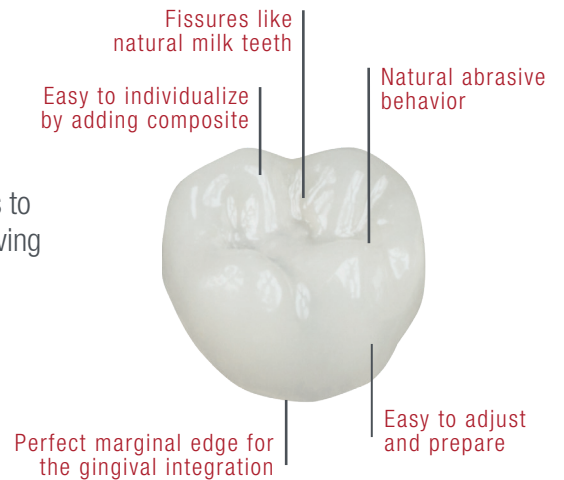


## Morphology and Aesthetics - Inspired by Nature

Ceramir Pediatric Crowns are prefabricated for primary teeth to ensure a precise fit, improving functionality and aesthetics by closely mimicking the color and shape of natural teeth.

Ceramir Pediatric Crowns have a glasslike structure with natural translucency and a high-gloss surface, mimicking natural tooth enamel.

Special laser sintering technology allows Ceramir Pediatric Crowns to have very thin walls, enabling less invasive procedures and preserving more tooth structure.



### INDICATIONS

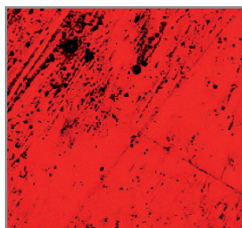
- Anterior and posterior restorations
- Fractured primary teeth following trauma
- Poor enamel quality
- Erosion



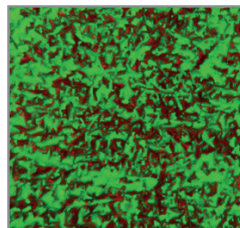
## Free of Bisphenol A

Ceramir Pediatric Crowns are biocompatible, free of Bisphenol A, non-toxic and cause no irritation to skin or mucosa – a perfect child friendly solution.\*

The shiny, smooth surface of Ceramir Pediatric Crowns prevents biofilm and bacterial growth, aiding daily oral hygiene and preventing marginal staining.



Test sample-Ceramir Pediatric Crown: no biofilm formation following exposure to bacteria.



Control sample - composite restorative material: Biofilm formation following exposure to bacteria.

\*Toxicity Studies: Human Stem Cells Intracutaneous reactivity test (ISO 10993-23:2021) and skin sensitization test (ISO 10993-10:2021) - Data on file.



## Unique Shock-absorbing Effect

Ceramir Pediatric Crowns combine the strength of lithium disilicate, the aesthetics of feldspathic ceramics, and the flexibility of dentin. This unique material provides a shock-absorbing effect, preventing damage to opposing teeth.

Technical Data	DEJ <small>Dentine-Enamel Junction</small>	Ceramir Pediatric Crown
Flexural Strength (Biaxial)	199,3 MPa	200 MPa
Compressive Strength	384 MPa	550 MPa
Flexural Modulus	20 GPa	20 GPa
Surface Hardness	159 HV	100 HV

Source: University of Geneva | Technical data from  
manufacturer's documentation

## Patient Case

**Multiple caries lesions in a very young patient.**

**Female patient, 4 years old. Main patient complaint: painful teeth during meals.**

A 4-year-old girl from New Delhi was referred to the Children's Dental Center due to pain while eating and visible cavities in her upper front teeth. Clinical examination revealed multiple cavities. The initial treatment plan aimed to relieve pain, remove the cavities, and restore function and aesthetics.

BEFORE  
TREATMENT



4 MONTHS AFTER  
TREATMENT



**Dental Team:**  
Dr. Kunal Gupta, Pediatric Dentist  
New Delhi, INDIA

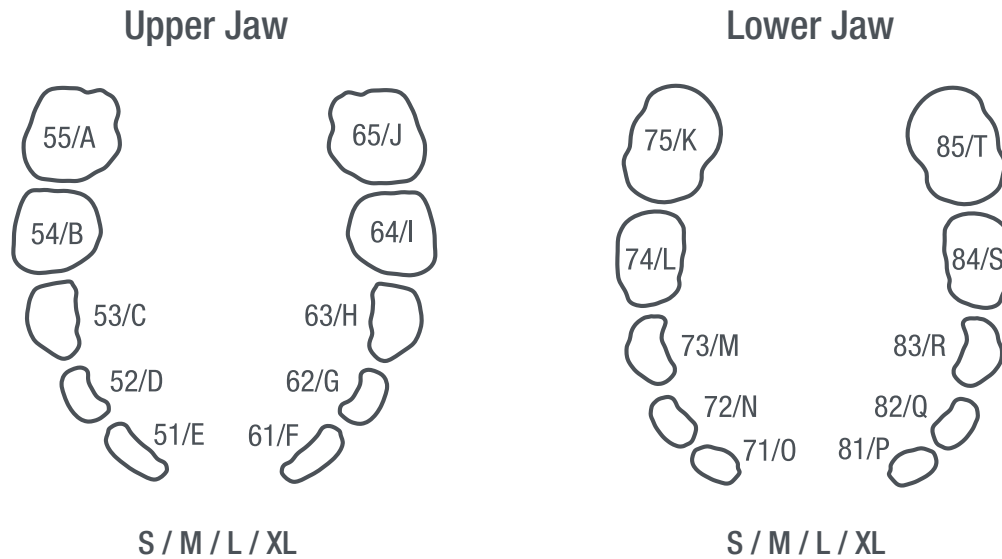
**Material:**  
Ceramir Pediatric Crowns  
Size- Medium

Images: Courtesy of Dr. Kunal Gupta

# Type and Size

## Prefabricated to fit all sizes of primary teeth

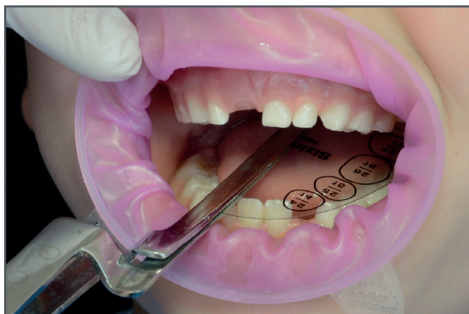
Ceramir Pediatric Crowns are available in small, medium and large sizes. Mesio-distal width ranges from 5.7 mm to 7.7 mm (upper incisors) and 9.8 mm to 13.1 mm (lower molars).



## Ceramir Pediatric Crown Sizing Guide

To choose the correct crown size you simply use the Ceramir Pediatric Crown Sizing Guide.

Using the Ceramir Pediatric Crown Sizing Guide – the correct crown size is selected by measuring the mesio-distal width at the level of the contact point of the prepared tooth, or by measuring the width of the contra-lateral tooth.





REF	Product Description	Pieces
805180	Ceramir Pediatric Crown Start Kit Complete 80 x Ceramir Pediatric Crowns (1 of each item) 1x Ceramir Primer, 1x Each Size guide	80 pcs/box
805181	Ceramir Pediatric Crown Start Kit Small 40 x Ceramir Pediatric Crown (1 of each - sizes Medium & Large) 1x Ceramir Primer, 1x Each Size guide	40 pcs/box
805100 / 805101/ 805102/ 805103	Ceramir Pediatric Crown 51/E Small /Medium/Large/X-Large	1 pcs/box
805104/ 805105/ 805106/ 805107	Ceramir Pediatric Crown 52/D Small /Medium/Large/X-Large	1 pcs/box
805108/ 805109/ 805110/ 805111	Ceramir Pediatric Crown 53/C Small /Medium/Large/X-Large	1 pcs/box
805112/ 805113/ 805114/ 805115	Ceramir Pediatric Crown 54/B Small /Medium/Large/X-Large	1 pcs/box
805116/ 805117/ 805118/ 805119	Ceramir Pediatric Crown 55/A Small /Medium/Large/X-Large	1 pcs/box
805120/ 805121/ 805122/ 805123	Ceramir Pediatric Crown 61/F Small /Medium/Large/X-Large	1 pcs/box
805124/ 805125/ 805126/ 805127	Ceramir Pediatric Crown 62/G Small /Medium/Large/X-Large	1 pcs/box
805128/ 805129/ 805130/ 805131	Ceramir Pediatric Crown 63/H Small /Medium/Large/X-Large	1 pcs/box
805132/ 805133/ 805134/ 805135	Ceramir Pediatric Crown 64/I Small /Medium/Large/X-Large	1 pcs/box
805136/ 805137 805138/ 805139	Ceramir Pediatric Crown 65/J Small /Medium/Large/X-Large	1 pcs/box
805140/ 805141/ 805142/ 805143	Ceramir Pediatric Crown 71/O Small /Medium/Large/X-Large	1 pcs/box
805144/ 805145/ 805146/ 805147	Ceramir Pediatric Crown 72/N Small /Medium/Large/X-Large	1 pcs/box
805148/ 805149/ 805150/ 805151	Ceramir Pediatric Crown 73/M Small /Medium/Large/X-Large	1 pcs/box
805152/ 805153/ 805154/ 805155	Ceramir Pediatric Crown 74/L Small /Medium/Large/X-Large	1 pcs/box
805156/ 805157/ 805158/ 805159	Ceramir Pediatric Crown 75/K Small /Medium/Large/X-Large	1 pcs/box
805160/ 805161/ 805162/ 805163	Ceramir Pediatric Crown 81/P Small /Medium/Large/X-Large	1 pcs/box
805164/ 805165/ 805166/ 805167	Ceramir Pediatric Crown 82/Q Small /Medium/Large/X-Large	1 pcs/box
805168/ 805169/ 805170/ 805171	Ceramir Pediatric Crown 83/R Small /Medium/Large/X-Large	1 pcs/box
805172/ 805173/ 805174/ 805175	Ceramir Pediatric Crown 84/S Small /Medium/Large/X-Large	1 pcs/box
805176/ 805177/ 805178/ 805179	Ceramir Pediatric Crown 85/T Small /Medium/Large/X-Large	1 pcs/box
805202	Ceramir Pediatric Crown Sizing Guide Set	8 pcs /box
10521	Veneer Bond	1 pc /box

Brought to you by  
**DIRECTA USA**  
 A Division of DirectaDentalGroup | [directausa.com](https://directausa.com)

**DIRECTA AB**  
 Finvids väg 8,  
 194 47 Upplands Väsby, SWEDEN  
 +46 8 506 505 75  
[info@directadental.com](mailto:info@directadental.com)  
[www.directadental.com](https://www.directadental.com)

**DIRECTA USA**  
 64 Barnabas Road, Unit 3  
 Newtown, CT. 06470, United States  
 +1 203.491.2273  
[infousa@directadental.com](mailto:infousa@directadental.com)  
[www.directausa.com](https://www.directausa.com)

 [directadentalusa](https://www.facebook.com/directadentalusa)  
 [directa\\_usa](https://www.instagram.com/directa_usa)  
 [DirectaDental](https://www.youtube.com/DirectaDental)

The contents of this brochure including layout and images are protected by copyright ©2024Directa AB. All rights reserved.

BRO\_CeramirPediatricCrown\_EN\_2024-05-13\_REV01

TECHNOLOGY BY  
  
 edelweiss  
 DENTISTRY