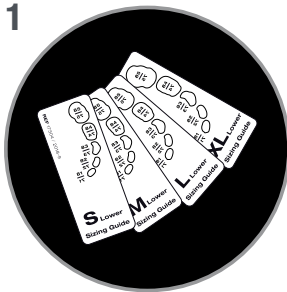
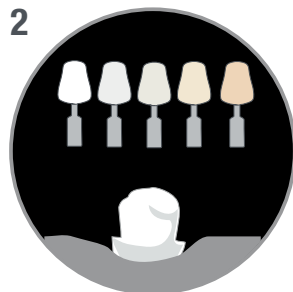


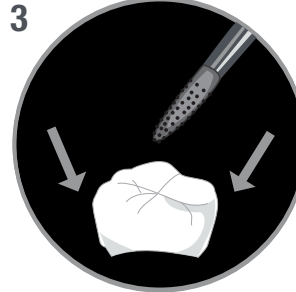
Selection of the ceramir pediatric crown



Select crown size with sizing guide set



Select composite color/shade



Adjust crown
(Margins, approximal contacts mesial/distal)



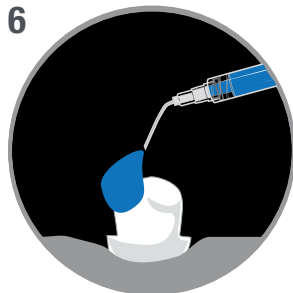
Prepare crown

1. Roughen the inside of the crown lightly
2. Apply a very thin layer of VENEER BOND to inner surface, rub surface for 30 sec
3. Dry surface with air
4. Light cure for 20 sec.
(Or apply equivalent bonding/primer and use it according to manufacturer's instructions.)

Preparation of the tooth



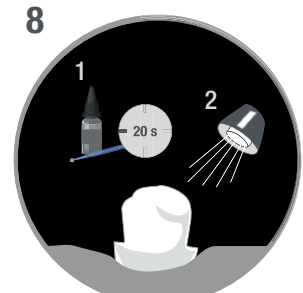
Prep your tooth
between 0.6mm - 0.7mm



Apply
37% phosphoric acid
(Enamel 15 sec/
Dentin 7 sec)



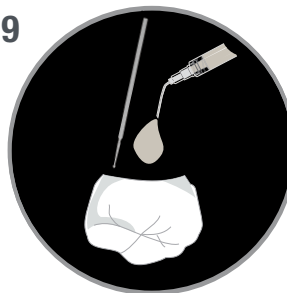
Rinse with water and
gently dry the surface



Prepare tooth

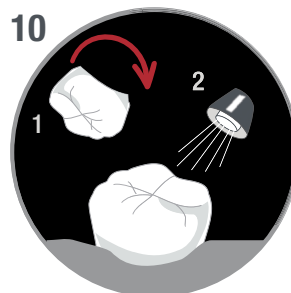
1. Apply dentin bonding (Rub surface with dentin bonding for 20 sec.)
2. Light cure (according to manufacturer's IFU)

Seating of the crown



Cementation

Coat inner walls of crown completely with a **THIN LAYER** of adhesive cement/composite with microbrush. (DO NOT FILL, over filling crown may cause damage to margins when seating)



Seating Crown

1. Place Crown buccal to lingual. This allows for better control and visibility, ensuring the crown fits properly.

DO NOT PLACE FROM OCCLUSAL

2. Light cure
(according to manufacturer's IFU)



Remove excess cement



Polish